



**Arkansas Department of Human Services
Monthly Enrollment and Expenditures Report
Calendar Year 2019**

Enrollment at 1st Day of Month

| | Arkansas | | Medicaid & CHIP | |
|----------------|----------|--------------------|-----------------|---------|
| | Works | Traditional Adults | Children | Total |
| January 2019 | 234,400 | 239,755 | 404,733 | 878,888 |
| February 2019 | 233,870 | 240,349 | 405,322 | 879,541 |
| March 2019 | 235,962 | 236,870 | 409,545 | 882,377 |
| April 2019 | 240,177 | 237,859 | 416,211 | 894,247 |
| May 2019 | 239,558 | 236,389 | 410,856 | 886,803 |
| June 2019 | 239,081 | 236,089 | 409,124 | 884,294 |
| July 2019 | | | | 0 |
| August 2019 | | | | 0 |
| September 2019 | | | | 0 |
| October 2019 | | | | 0 |
| November 2019 | | | | 0 |
| December 2019 | | | | 0 |

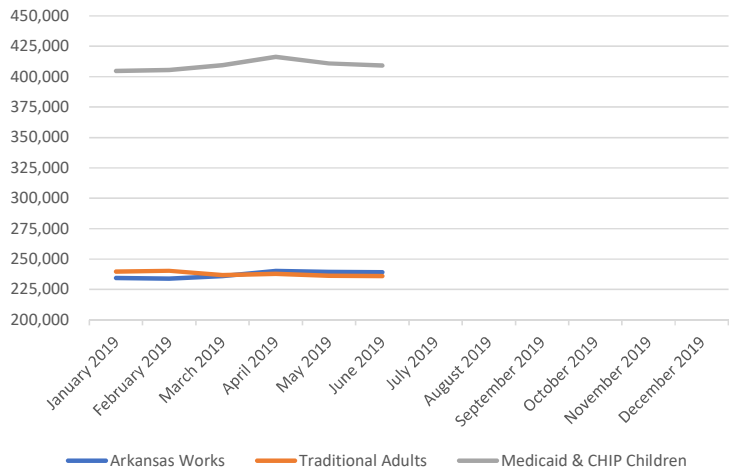
NOTE: Enrollment numbers are based on report ran on the first Monday after the claim cycle that includes in the first day of the month.

Enrollment as of the Last Day of the Month

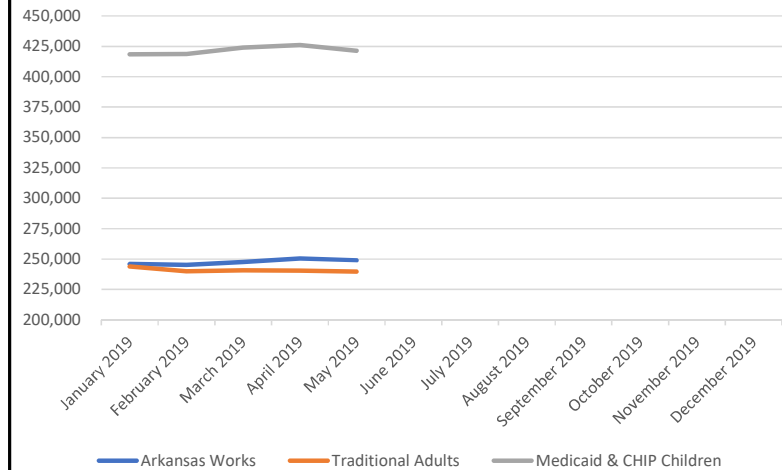
| | Arkansas Works | | Medicaid & CHIP Children | |
|----------------|--------------------|----------|--------------------------|---------|
| | Traditional Adults | Children | Total | |
| January 2019 | 245,857 | 243,819 | 418,424 | 908,100 |
| February 2019 | 245,198 | 239,963 | 418,615 | 903,776 |
| March 2019 | 247,631 | 240,876 | 423,870 | 912,377 |
| April 2019 | 250,573 | 240,558 | 426,091 | 917,222 |
| May 2019 | 249,025 | 239,641 | 421,342 | 910,008 |
| June 2019 | | | | 0 |
| July 2019 | | | | 0 |
| August 2019 | | | | 0 |
| September 2019 | | | | 0 |
| October 2019 | | | | 0 |
| November 2019 | | | | 0 |
| December 2019 | | | | 0 |

NOTE: Enrollment numbers are based on report ran on the first Monday after the claim cycle that includes in the first day of the month. January through March 2019 End of the Month Enrollment numbers were ran on April 17, 2019.

Enrollment at 1st Day of Month



Enrollment as of the Last Day of the Month





**Arkansas Department of Human Services
Monthly Enrollment and Expenditures Report
Calendar Year 2019**

Total Spend Per Month - Arkansas Works 1115 Demonstration Premium Assistance Program

| | Arkansas Works | Arkansas Works Premiums | Arkansas Works Cost Sharing | Arkansas Works Wrap Services | Total Arkansas Works QHP Program | Arkansas Works PMPM QHP Program | Reconciliation Payments & Non-Claim Adjustments | Arkansas Works PMPM QHP Program After Reconciliations | Budget Neutrality Amount |
|----------------|----------------|-------------------------|-----------------------------|------------------------------|----------------------------------|---------------------------------|---|---|--------------------------|
| January 2019 | 193,186 | \$87,787,873.55 | \$31,903,617.08 | \$676,746.66 | \$120,368,237.29 | \$623.07 | (\$297,227.63) | \$621.53 | \$625.39 |
| February 2019 | 191,587 | \$86,734,810.88 | \$31,703,014.94 | \$686,112.77 | \$119,123,938.59 | \$621.77 | (\$350,995.82) | \$619.94 | \$625.39 |
| March 2019 | 195,886 | \$88,558,636.23 | \$32,341,434.73 | \$701,381.96 | \$121,601,452.92 | \$620.78 | \$30,641,195.04 | \$777.20 | \$625.39 |
| April 2019 | 201,439 | \$88,410,798.71 | \$32,307,564.91 | \$702,276.71 | \$121,420,640.33 | \$602.77 | \$10,587,542.38 | \$655.33 | \$625.39 |
| May 2019 | 200,098 | \$91,582,756.88 | \$33,483,654.60 | \$713,633.74 | \$125,780,045.22 | \$628.59 | (\$314,207.48) | \$627.02 | \$625.39 |
| June 2019 | | | | | | | | | |
| July 2019 | | | | | | | | | |
| August 2019 | | | | | | | | | |
| September 2019 | | | | | | | | | |
| October 2019 | | | | | | | | | |
| November 2019 | | | | | | | | | |
| December 2019 | | | | | | | | | |

NOTE: Arkansas Works program has reconciliations done on a periodic basis for cost sharing reduction payments and premium payments made for individuals above 100% FPL. These payments are not included in the claims processing payments due to the material impact on a per member per month amount in the month paid despite the payments being made for previous months. **March 2019 and April 2019 adjustment includes Annual Cost Sharing Reconciliations to QHP Carriers. These amounts are applied to budget neutrality figures for 2016 and 2017 and are not matched against budget neutrality for 2019.**

Total Spend Per Month - Fee For Service

| | Newly Eligible | Fee for Service Payments | Newly Eligible FFS PMPM | Traditional FFS | Traditional Medicaid Fee for Service Payments | Traditional Medicaid Fee For Service | Total FFS Members | Total FFS Expenditures | Total FFS PMPM |
|----------------|----------------|--------------------------|-------------------------|-----------------|---|--------------------------------------|-------------------|------------------------|----------------|
| January 2019 | 52,671 | \$21,946,332.34 | \$416.67 | 662,243 | \$335,885,222.00 | \$507.19 | 714,914 | \$357,831,554.34 | \$500.52 |
| February 2019 | 53,611 | \$22,694,690.23 | \$423.32 | 658,578 | \$487,814,099.00 | \$740.71 | 712,189 | \$510,508,789.23 | \$716.82 |
| March 2019 | 51,745 | \$28,265,675.04 | \$546.25 | 664,746 | \$663,522,160.00 | \$998.16 | 716,491 | \$691,787,835.04 | \$965.52 |
| April 2019 | 49,134 | \$22,050,258.29 | \$448.78 | 666,649 | \$451,955,247.00 | \$677.95 | 715,783 | \$474,005,505.29 | \$662.22 |
| May 2019 | 48,927 | \$37,409,438.26 | \$764.60 | 660,983 | \$573,899,403.00 | \$868.25 | 709,910 | \$611,308,841.26 | \$861.11 |
| June 2019 | | | | | | | | | |
| July 2019 | | | | | | | | | |
| August 2019 | | | | | | | | | |
| September 2019 | | | | | | | | | |
| October 2019 | | | | | | | | | |
| November 2019 | | | | | | | | | |
| December 2019 | | | | | | | | | |

NOTE: Fee for service per member per month fluctuates due to timing of claims being paid. Additionally, payment of non-claims activity such as supplemental payments and disproportionate share hospital payments can significantly alter the per member per month amount for the month those payments are made.