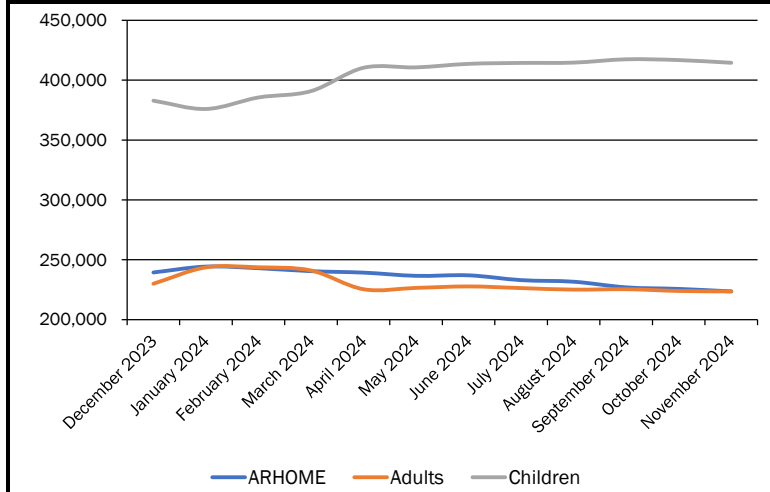




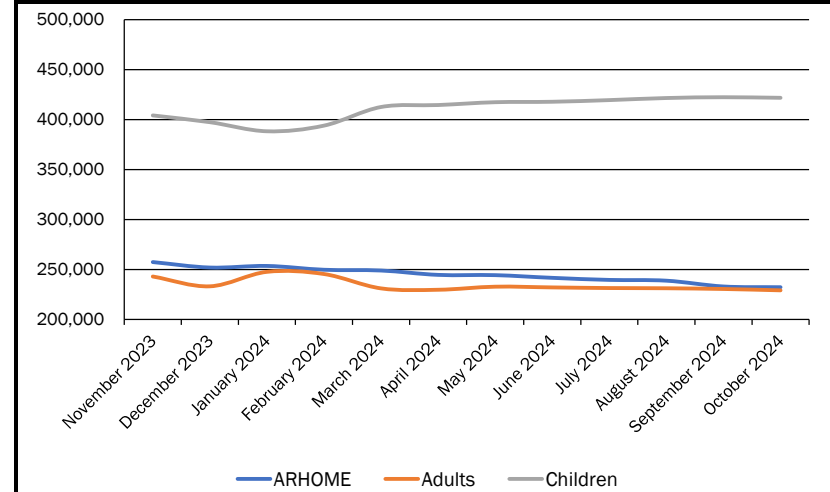
Enrollment at the First Day of the Month				
	ARHOME	Adults	Children	Total
December 2023	239,439	230,018	382,886	852,343
January 2024	244,350	243,703	375,958	864,011
February 2024	242,988	243,740	385,570	872,298
March 2024	240,505	241,085	390,875	872,465
April 2024	239,294	225,421	410,374	875,089
May 2024	236,623	226,550	410,696	873,869
June 2024	237,033	227,774	413,641	878,448
July 2024	233,037	226,400	414,404	873,841
August 2024	231,694	225,109	414,682	871,485
September 2024	226,989	225,443	417,446	869,878
October 2024	225,698	223,990	416,793	866,481
November 2024	223,633	223,556	414,513	861,702
Highest Overall Enrollment:	June 2024			878,448
Lowest Overall Enrollment:	December 2023			852,343

NOTE: Enrollment numbers are based on report ran on the first Monday after the claim cycle that includes in the first day of the month.



Enrollment at the Last Day of the Month				
	ARHOME	Adults	Children	Total
November 2023	257,402	242,973	404,184	904,559
December 2023	251,936	233,154	397,421	882,511
January 2024	253,523	247,648	388,303	889,474
February 2024	249,721	245,449	393,967	889,137
March 2024	248,934	231,070	412,619	892,623
April 2024	244,581	229,695	414,582	888,858
May 2024	244,316	232,784	417,405	894,505
June 2024	241,619	232,041	417,849	891,509
July 2024	239,557	231,419	419,518	890,494
August 2024	238,780	231,203	421,599	891,582
September 2024	232,987	230,485	422,401	885,873
October 2024	232,238	229,111	421,796	883,145
Highest Overall Enrollment:	November 2023			904,559
Lowest Overall Enrollment:	December 2023			882,511

NOTE: Enrollment numbers are based on report ran on the first Monday after the claim cycle that includes in the first day of the month.



*The discrepancy in enrollment numbers and member months are due to the different sources of data. Enrollment numbers are pulled using point in time eligibility, while member months reconcile to the number of capitation payments made.



ARHOME Total Spend Per Month									
	ARHOME QHP Enrollees	ARHOME Premiums	ARHOME Cost Sharing	ARHOME Wrap Services	Total ARHOME QHP Program	ARHOME PMPM QHP Program	Reconciliation Payments & Non-Claim Adjustments	ARHOME PMPM QHP Program After Reconciliations	Budget Neutrality Amount
January 2024	200,419	\$112,612,215	\$42,782,855	\$914,854	\$156,309,924	\$779.92	(\$189,587)	\$778.97	\$802.86
February 2024	202,222	\$112,510,192	\$42,746,790	\$940,341	\$156,197,323	\$772.41	(\$19,720)	\$772.31	\$802.86
March 2024	202,978	\$111,809,802	\$42,482,319	\$951,796	\$155,243,917	\$764.83	(\$16,542)	\$764.75	\$802.86
April 2024	198,701	\$110,353,433	\$41,932,704	\$964,528	\$153,250,664	\$771.26	(\$176,991)	\$770.37	\$802.86
May 2024	198,967	\$110,149,181	\$41,855,055	\$929,880	\$152,934,117	\$768.64	(\$174,575)	\$767.76	\$802.86
June 2024	200,354	\$110,384,599	\$41,945,974	\$949,308	\$153,279,881	\$765.05	\$142,813	\$765.76	\$802.86
July 2024	199,055	\$108,250,057	\$41,134,282	\$944,065	\$150,328,404	\$755.21	\$213,781	\$756.28	\$802.86
August 2024	197,226	\$108,229,122	\$41,126,710	\$939,998	\$150,295,831	\$762.05	(\$92,094,900)	\$295.10	\$802.86
September 2024	191,429	\$104,934,612	\$39,875,002	\$900,620	\$145,710,235	\$761.17	(\$1,359,714)	\$754.07	\$802.86
October 2024	191,017	\$102,423,573	\$38,982,391	\$907,310	\$142,313,274	\$745.03	(\$47,271,352)	\$497.56	\$802.86
November 2024									
December 2024									

NOTE: ARHOME program has reconciliations done on a periodic basis for cost sharing reduction payments and premium payments made for individuals above 100% FPL. These payments are not included in the claims processing payments due to the material impact on a per member per month amount in the month paid despite the payments being made for previous months. August adjustments include Annual Cost Sharing Reconciliations to QHP Carriers for 2022. We recouped approximately \$94.7 million for the recon settlement.

Fee-for-Service (FFS) Total Spend Per Month									
	Newly Eligible Enrollees	FFS Payments	Newly Eligible FFS PMPM	Traditional FFS Enrollees	Traditional Medicaid FFS Payments	Traditional Medicaid FFS PMPM	Total FFS Members	Total FFS Expenditures	Total FFS PMPM
January 2024	54,503	\$18,301,225	\$335.78	635,951	\$365,423,911	\$574.61	690,454	\$383,725,136	\$555.76
February 2024	48,716	\$27,049,443	\$555.25	639,416	\$482,513,021	\$754.62	688,132	\$509,562,464	\$740.50
March 2024	46,434	\$25,758,772	\$554.74	643,689	\$492,764,410	\$765.53	690,123	\$518,523,182	\$751.35
April 2024	47,095	\$34,009,035	\$722.14	644,277	\$523,902,223	\$813.16	691,372	\$557,911,258	\$806.96
May 2024	46,808	\$32,681,139	\$698.20	650,189	\$469,416,268	\$721.97	696,997	\$502,097,406	\$720.37
June 2024	42,568	\$17,509,309	\$411.33	649,890	\$505,200,906	\$777.36	692,458	\$522,710,215	\$754.86
July 2024	41,659	\$24,111,868	\$578.79	650,937	\$414,723,244	\$637.12	692,596	\$438,835,113	\$633.61
August 2024	42,825	\$31,892,137	\$744.71	652,802	\$405,896,994	\$621.78	695,627	\$437,789,131	\$629.34
September 2024	42,742	\$17,955,640	\$420.09	652,886	\$340,160,713	\$521.01	695,628	\$358,116,353	\$514.81
October 2024	42,252	\$19,142,803	\$453.06	650,907	\$346,132,206	\$531.77	693,159	\$365,275,009	\$526.97
November 2024									
December 2024									

NOTE: (1) Fee-for-Service (FFS) per member per month (PMPM) fluctuates due to timing of claims being paid. Additionally, payment of non-claims activity such as supplemental payments and disproportionate share hospital payments can significantly alter the per member per month amount for the month those payments are made.

(2) Fee-for-Service (FFS) Payments EXCLUDES ANY Capitated Payments. These include but not limited to PASSE, Arkansas Patient-Centered Medical Home Program (PCMH), Non-Emergency Transportation (NET), Dental Managed Care, etc.