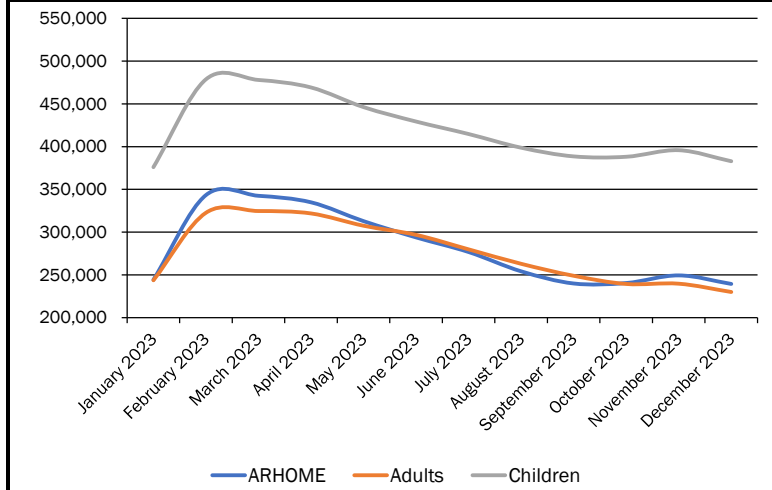




Enrollment at the First Day of the Month

	ARHOME	Adults	Children	Total
February 2023	343,321	322,646	478,672	1,144,639
March 2023	342,495	324,678	477,928	1,145,101
April 2023	334,866	321,863	469,142	1,125,871
May 2023	312,860	307,510	446,171	1,066,541
June 2023	293,851	296,855	429,314	1,020,020
July 2023	276,764	279,878	414,722	971,364
August 2023	254,200	263,000	398,726	915,926
September 2023	239,990	248,996	388,558	877,544
October 2023	240,519	239,423	388,117	868,059
November 2023	249,436	239,732	395,783	884,951
December 2023	239,439	230,018	382,886	852,343
January 2023	244,350	243,703	375,958	864,011
Highest Overall Enrollment:	June 2023		1,145,101	
Lowest Overall Enrollment:	December 2023		852,343	

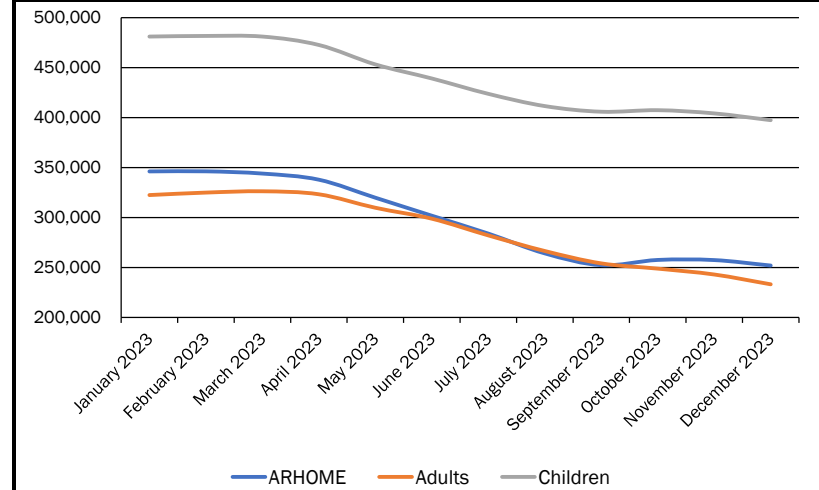
NOTE: Enrollment numbers are based on report ran on the first Monday after the claim cycle that includes in the first day of the month.



Enrollment at the Last Day of the Month

	ARHOME	Adults	Children	Total
January 2023	346,139	322,476	481,116	1,149,731
February 2023	346,224	324,955	481,717	1,152,896
March 2023	343,994	326,252	481,101	1,151,347
April 2023	337,845	323,259	472,666	1,133,770
May 2023	319,838	309,756	453,226	1,082,820
June 2023	301,811	298,833	439,162	1,039,806
July 2023	283,905	282,103	423,770	989,778
August 2023	264,098	266,483	411,544	942,125
September 2023	252,311	254,101	405,861	912,273
October 2023	257,529	248,830	407,421	913,780
November 2023	257,402	242,973	404,184	904,559
December 2023	251,936	233,154	397,421	882,511
Highest Overall Enrollment:	May 2023		1,152,896	
Lowest Overall Enrollment:	December 2023		882,511	

NOTE: Enrollment numbers are based on report ran on the first Monday after the claim cycle that includes in the first day of the month.



*The discrepancy in enrollment numbers and member months are due to the different sources of data. Enrollment numbers are pulled using point in time eligibility, while member months reconcile to the number of capitation payments made.



ARHOME Total Spend Per Month									
	ARHOME QHP Enrollees	ARHOME Premiums	ARHOME Cost Sharing	ARHOME Wrap Services	Total ARHOME QHP Program	ARHOME PMPM QHP Program	Reconciliation Payments & Non-Claim Adjustments	ARHOME PMPM QHP Program After Reconciliations	Budget Neutrality Amount
January 2023	302,510	\$201,231,327	\$80,335,322	\$1,298,672	\$282,865,321	\$935.06	(\$60,618,277)	\$734.68	\$758.85
February 2023	301,024	\$156,164,609	\$62,529,170	\$1,292,230	\$219,986,009	\$730.79	(\$5,034,295)	\$714.07	\$758.85
March 2023	295,685	\$152,405,273	\$61,013,001	\$446,165	\$213,864,439	\$723.28	\$38,400,670	\$853.15	\$758.85
April 2023	285,998	\$146,435,598	\$58,628,514	\$1,140,673	\$206,204,785	\$721.00	(\$7,777,930)	\$693.81	\$758.85
May 2023	262,799	\$138,542,737	\$55,456,826	\$1,054,260	\$195,053,823	\$742.22	(\$16,586)	\$742.15	\$758.85
June 2023	239,704	\$128,888,571	\$51,558,978	\$1,235,155	\$181,682,705	\$757.95	\$2,695,244	\$769.19	\$758.85
July 2023	216,779	\$113,932,169	\$45,561,567	\$885,417	\$160,379,153	\$739.83	(\$6,805,295)	\$708.44	\$758.85
August 2023	218,690	\$118,145,929	\$47,251,147	\$752,804	\$166,149,880	\$759.75	(\$6,962,769)	\$727.91	\$758.85
September 2023	203,413	\$108,314,898	\$43,318,658	\$1,126,269	\$152,759,825	\$750.98	\$27,523,735	\$886.29	\$758.85
October 2023	199,938	\$107,978,557	\$43,186,929	\$597,527	\$151,763,013	\$759.05	(\$61,800,678)	\$449.95	\$758.85
November 2023	199,909	\$107,113,128	\$42,843,357	\$460,926	\$150,417,411	\$752.43	(\$2,905,034)	\$737.90	\$758.85
December 2023	199,025	\$102,861,298	\$41,147,098	\$900,707	\$144,909,102	\$728.09	(\$4,282,613)	\$706.58	\$758.85

NOTE: ARHOME program has reconciliations done on a periodic basis for cost sharing reduction payments and premium payments made for individuals above 100% FPL. These payments are not included in the claims processing payments due to the material impact on a per member per month amount in the month paid despite the payments being made for previous months. ARHOME Premiums and Cost Sharing increases are due to rate changes effective January 1st, 2022. January adjustments include Annual Cost Sharing Reconciliations to QHP Carriers. September adjustments include Cost Sharing (CSR) payments to QHP carriers for the remainder of 2021. October adjustments have a Medical Loss Ratio (MLR) recoupment from QHP carriers that added funds back.

Fee-for-Service (FFS) Total Spend Per Month									
	Newly Eligible Enrollees	FFS Payments	Newly Eligible FFS PMPM	Traditional FFS Enrollees	Traditional Medicaid FFS Payments	Traditional Medicaid FFS PMPM	Total FFS Members	Total FFS Expenditures	Total FFS PMPM
January 2023	44,764	\$18,569,626	\$414.83	803,592	\$369,928,709	\$460.34	848,356	\$388,498,335	\$457.94
February 2023	46,339	\$17,995,735	\$388.35	806,672	\$462,047,283	\$572.78	853,011	\$480,043,018	\$562.76
March 2023	49,237	\$26,606,746	\$540.38	807,353	\$605,217,652	\$749.63	856,590	\$631,824,398	\$737.60
April 2023	53,383	\$17,497,155	\$327.77	795,925	\$544,458,906	\$684.06	849,308	\$561,956,060	\$661.66
May 2023	58,772	\$18,285,890	\$311.13	762,982	\$363,970,521	\$477.04	821,754	\$382,256,411	\$465.17
June 2023	63,521	\$23,158,715	\$364.58	737,995	\$462,614,808	\$626.85	801,516	\$485,773,523	\$606.07
July 2023	68,524	\$18,937,990	\$276.37	705,873	\$377,648,788	\$535.01	774,397	\$396,586,778	\$512.12
August 2023	46,602	\$33,969,090	\$728.92	678,027	\$587,518,814	\$866.51	724,629	\$621,487,904	\$857.66
September 2023	50,340	\$17,955,640	\$356.69	659,962	\$340,160,713	\$515.42	710,302	\$358,116,353	\$504.17
October 2023	59,467	\$19,142,803	\$321.91	656,251	\$346,132,206	\$527.44	715,718	\$365,275,009	\$510.36
November 2023	59,177	\$23,758,565	\$401.48	647,157	\$451,176,127	\$697.17	706,334	\$474,934,692	\$672.39
December 2023	53,995	\$19,030,442	\$352.45	630,575	\$458,970,062	\$727.86	684,570	\$478,000,504	\$698.25

NOTE: (1) Fee-for-Service (FFS) per member per month (PMPM) fluctuates due to timing of claims being paid. Additionally, payment of non-claims activity such as supplemental payments and disproportionate share hospital payments can significantly alter the per member per month amount for the month those payments are made.

(2) Fee-for-Service (FFS) Payments EXCLUDES ANY Capitated Payments. These include but not limited to PASSE, Arkansas Patient-Centered Medical Home Program (PCMH), Non-Emergency Transportation (NET), Dental Managed Care, etc.