

Division of Youth Services  
Arkansas Child Welfare Report Card  
In Compliance with Act 1222 of 1995  
Report Period July 2009 – June 2010

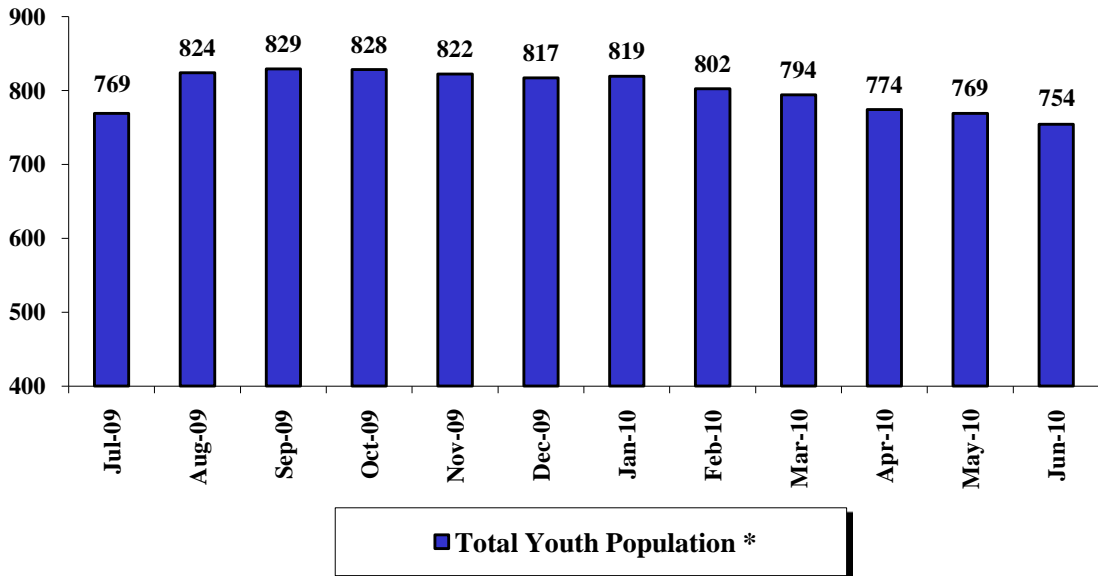


## **Executive Summary**

For FY 2010 the age and gender of committed juvenile offenders remained overwhelmingly males between 15 and 17 years of age. In FY 2010 there was a 17% decrease in Caucasian youth, a 12% decrease in African-American youth, and a 38% increase in youth of other ethnicities committed to DYS. In FY 2010 the number of youth recommitted to DYS increased 2 percentage points and the number of youth committed for felony type offenses decreased by 2%. The number of commitments to DYS from FY 2006 through FY 2009 averaged around 596 annually. In FY 2010 the number of commitments decreased by 16.5% from the prior year.

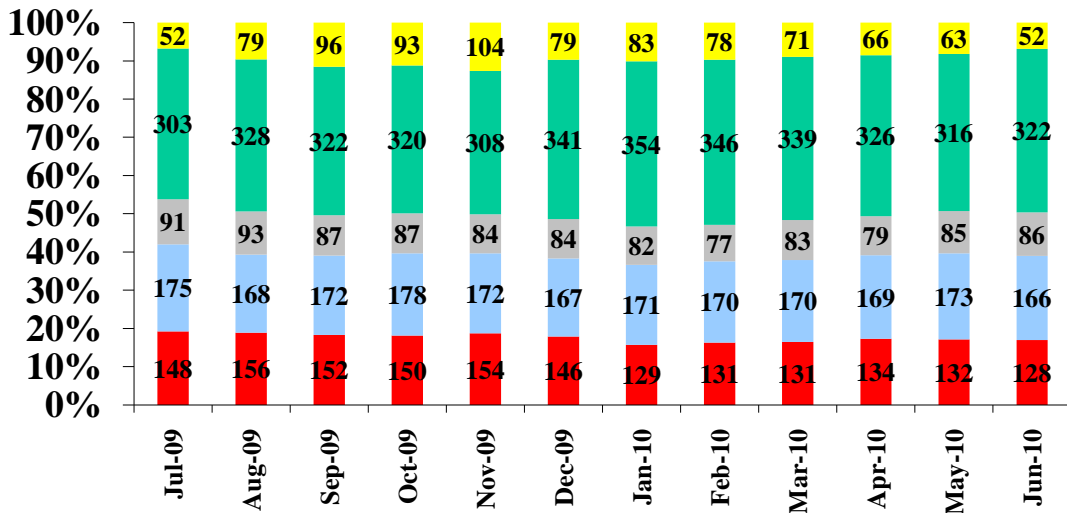
## Population Profiles July 2009 - June 2010

### Total Population in DYS Custody



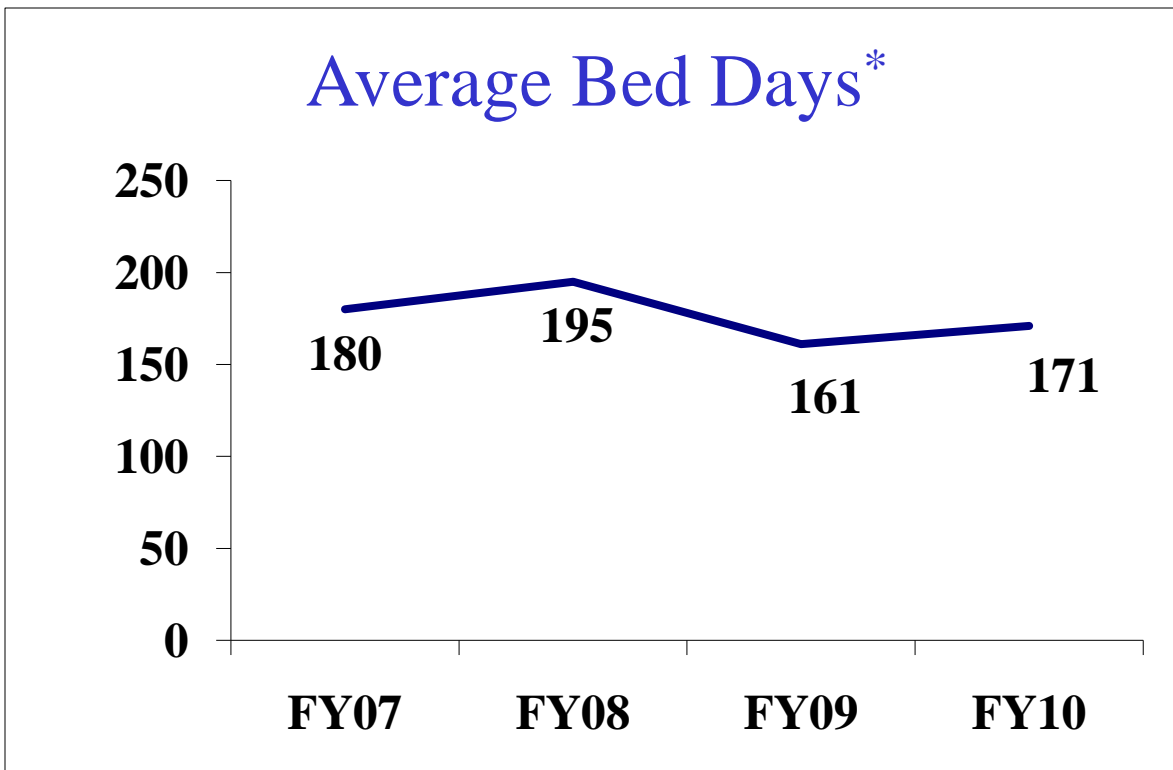
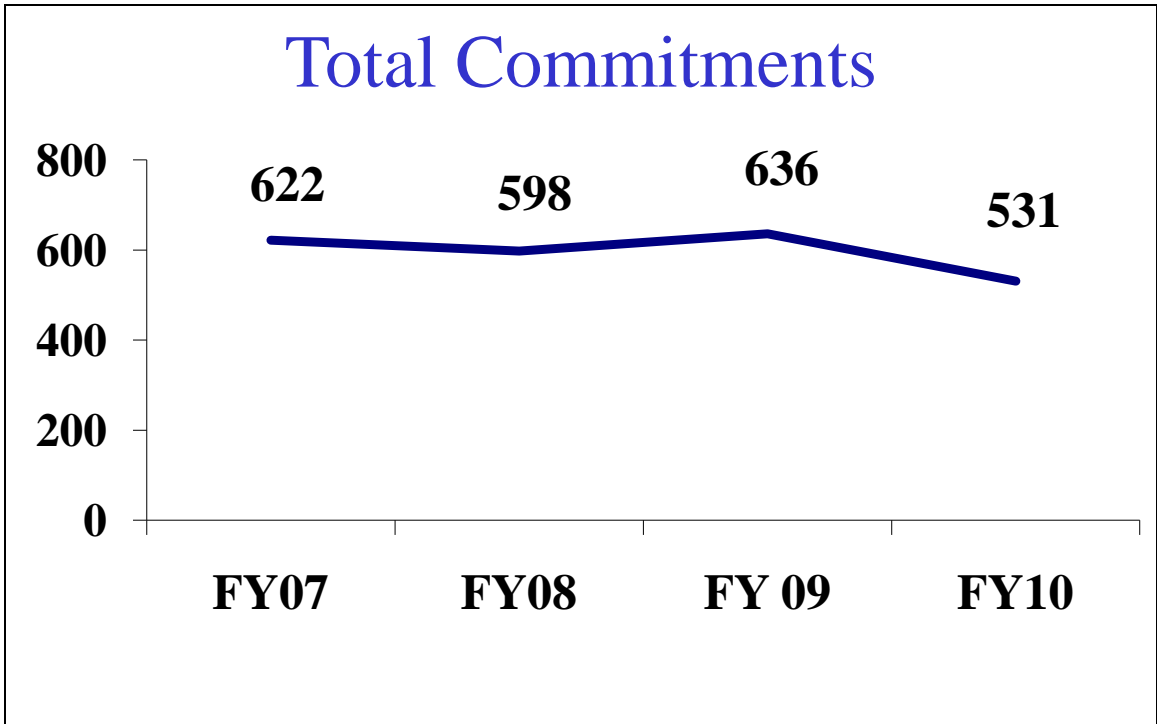
\*Total Youth Population is based on the population count on the first day of the month.

### Population by Program Type



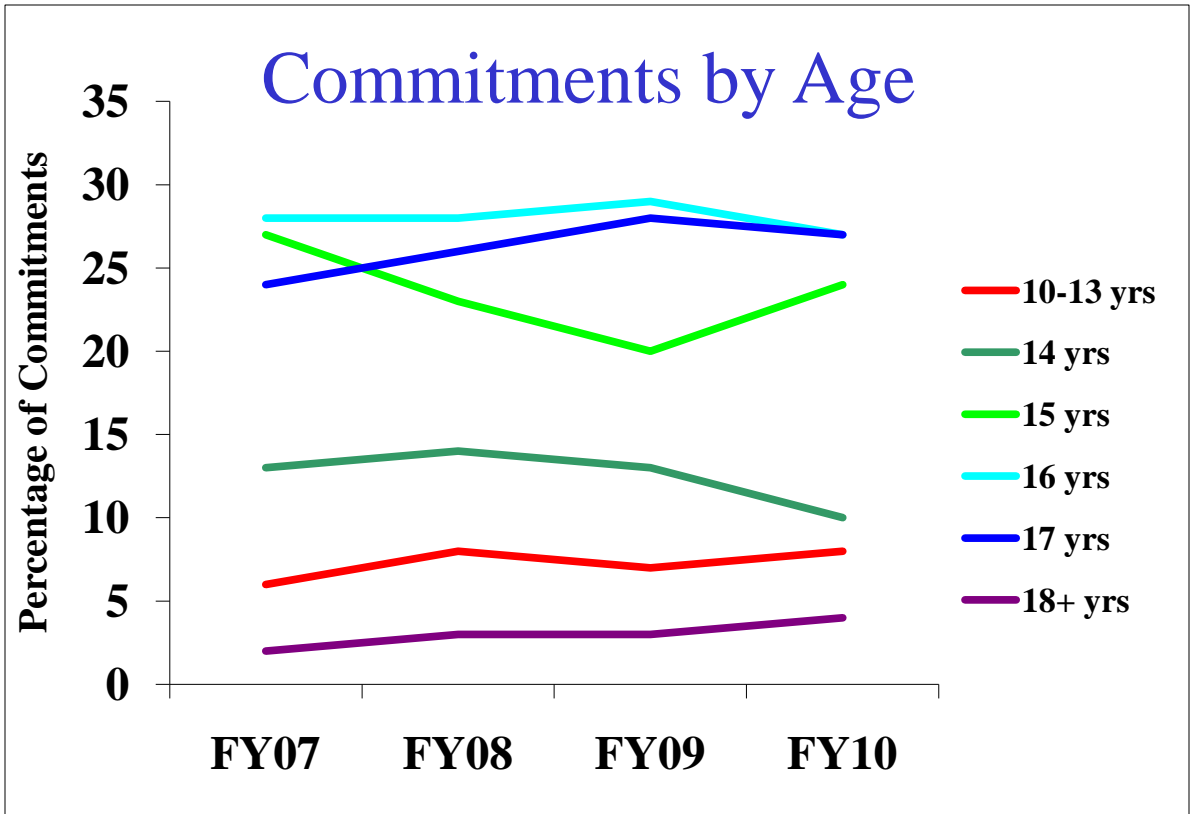
■ Juvenile Correction Facilities   
 ■ Juvenile Treatment Facilities   
 ■ Specialty Provider  
■ Intensive Case Management   
 ■ Juvenile Detention Center

**Profiles of Juveniles Committed  
July 2009 - June 2010**

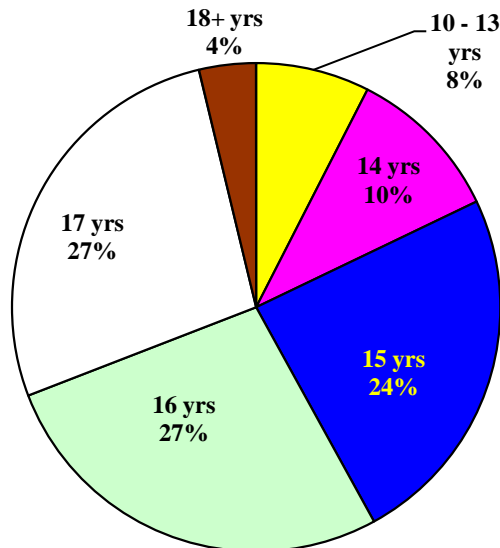


\* Average Bed Days captures all releases from residential programs during the fiscal year.

**Profiles of Juveniles Committed  
July 2009 - June 2010**

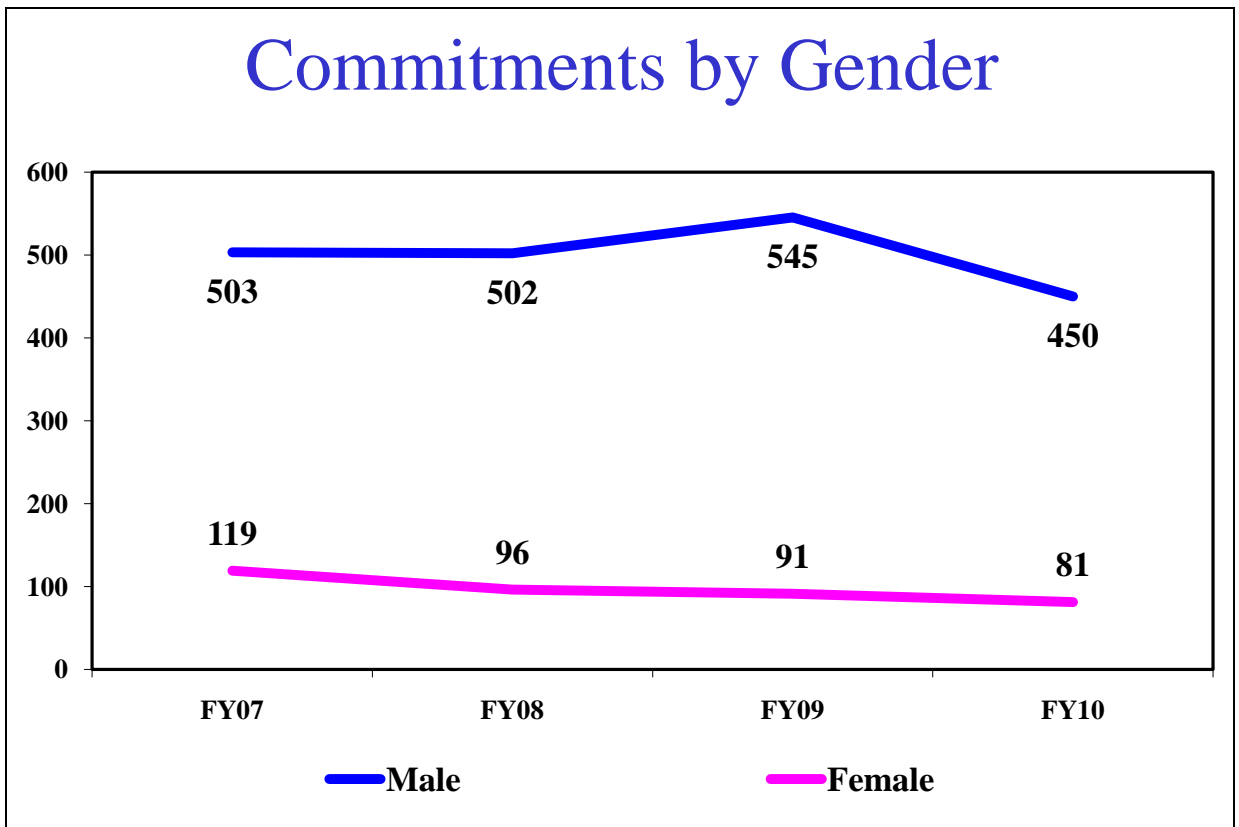


## FY10 Commitments by Age

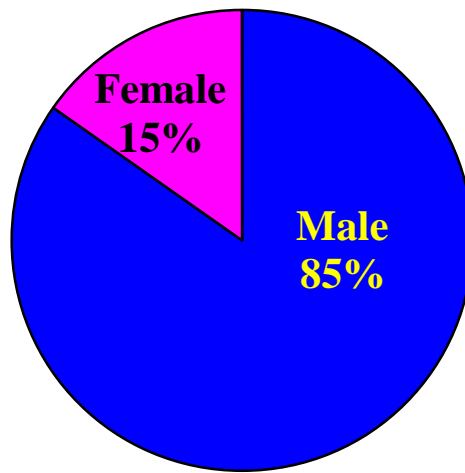


**Profiles of Juveniles Committed  
July 2009 - June 2010**

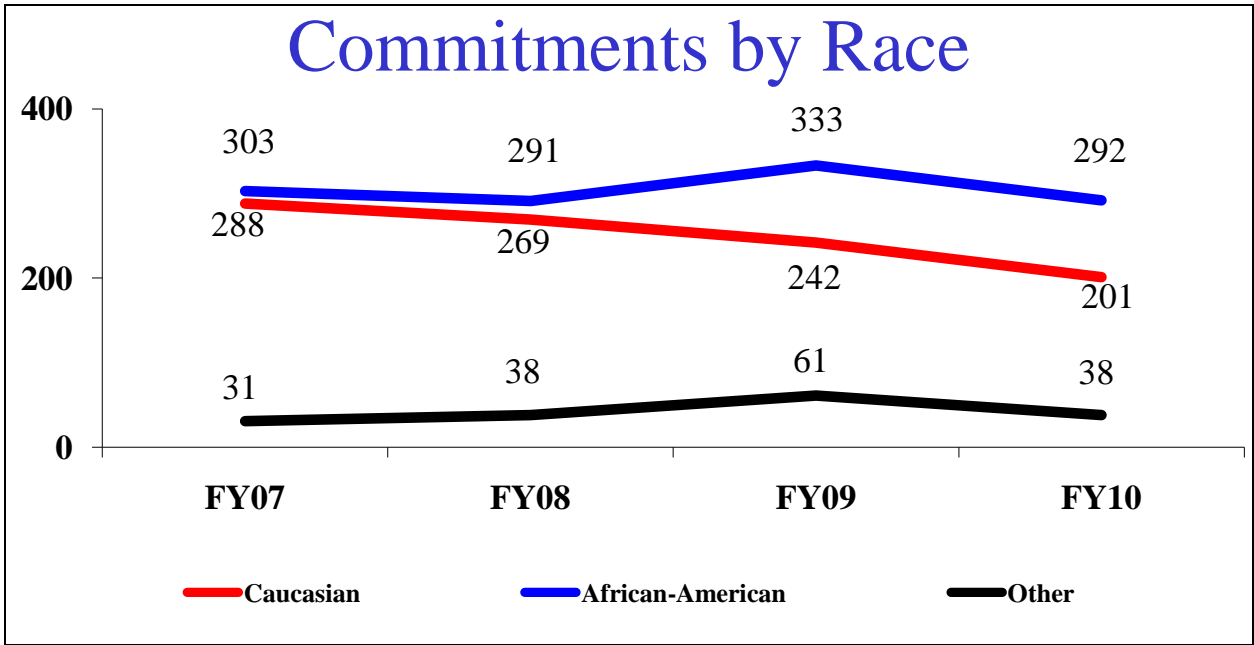
## Commitments by Gender



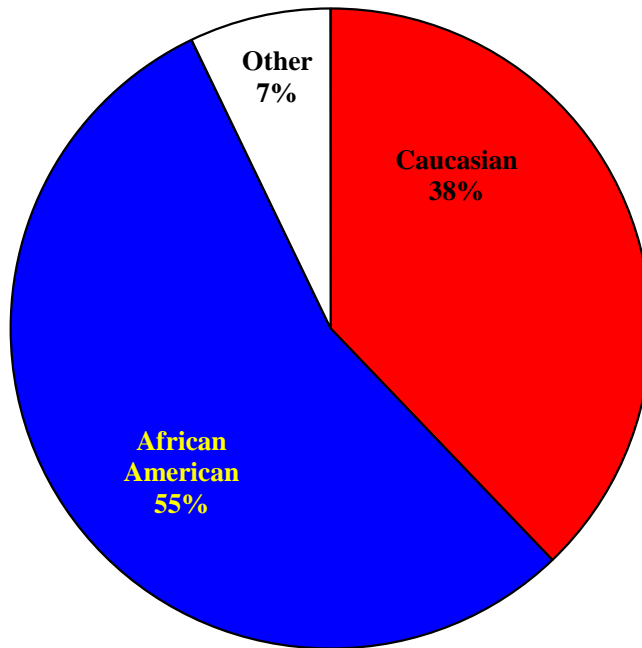
## FY10 Commitments by Gender



**Profiles of Juveniles Committed  
July 2009 - June 2010**

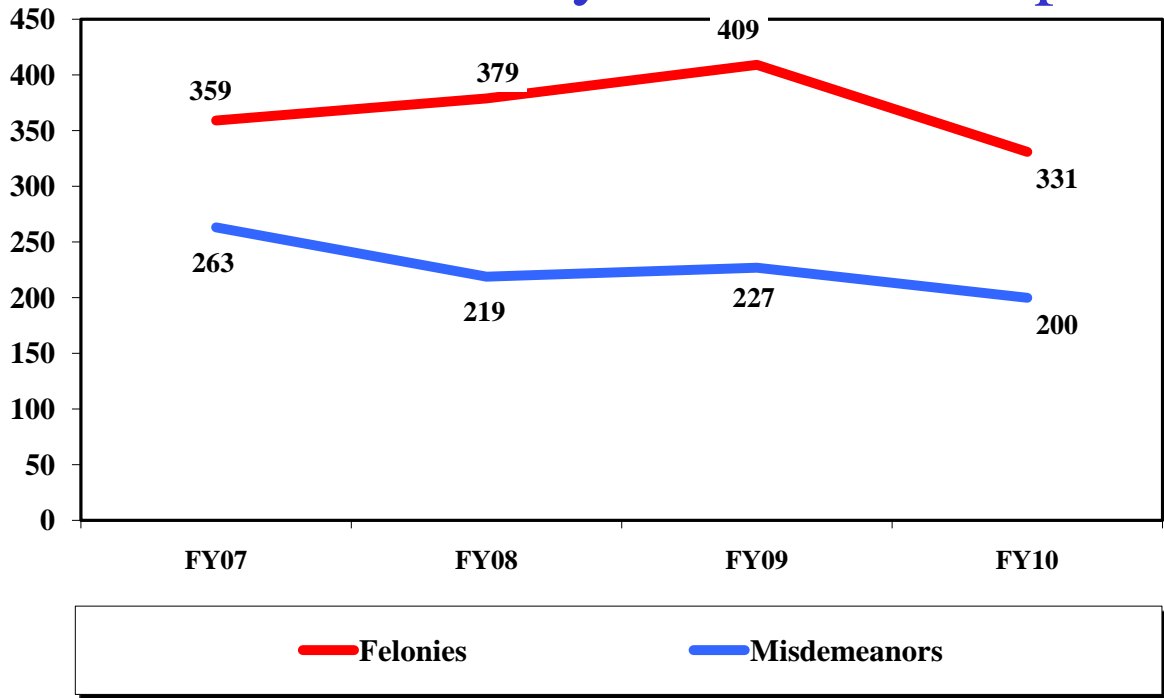


### FY10 Commitments by Race

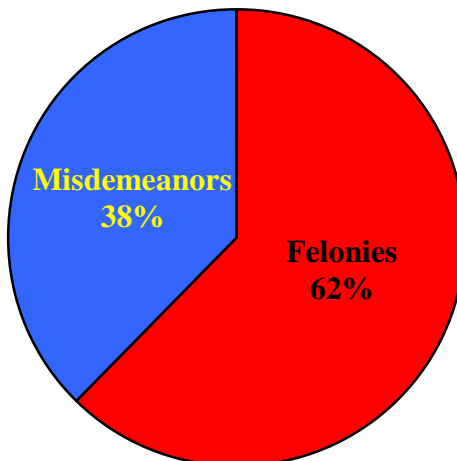


**Profiles of Juveniles Committed  
July 2009 - June 2010**

## Commitments by Offense Group



## FY10 Commitments by Offense Group





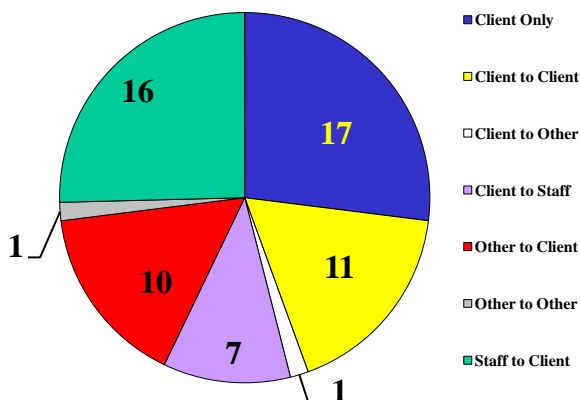
# INCIDENTS

## Incidents Accepted by the Child Abuse Hotline July 2009 - June 2010

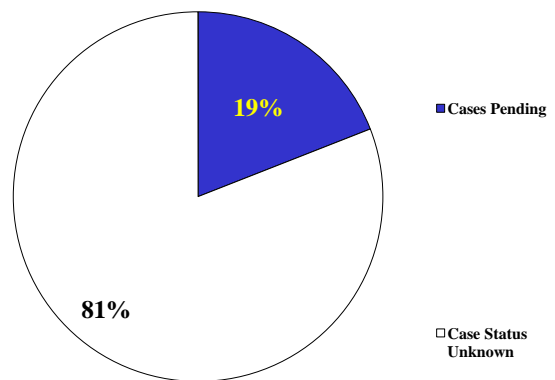
REFERRED TO HOTLINE		INCIDENTS ACCEPTED BY HOTLINE			
97		63			
Incident Type	Cases Accepted by ASP	Cases Pending	Cases Founded	Cases Unfounded	Case Status Unknown*
ASSAULT	5	0	0	0	5
DEATH	0	0	0	0	0
DISORDERLY CONDUCT	7	1	0	0	6
FIGHT	4	0	0	0	4
NEGLECT	0	0	0	0	0
OTHER	8	0	0	0	8
PHYSICAL ABUSE	7	4	0	0	3
SEXUAL ABUSE/RAPE	22	4	0	0	18
SEXUAL MISCONDUCT	10	3	0	0	7
<b>TOTAL</b>	<b>63</b>	<b>12</b>	<b>0</b>	<b>0</b>	<b>51</b>

\* Since the Hotline and the Investigations units are two separate sections within the Arkansas State Police, the Hotline may accept an incident called in, then later the incident will not be investigated by the Investigations Unit after review of the circumstances. The DYS IAU never receives a follow-up on these reports to know whether they were ever investigated. Some of these incidents occurred prior to the juvenile being committed to DYS. The IAU does not receive notification of the findings in these incidents. Some incidents that are reported in one quarter may not be finalized by the State Police until sometime within the next quarter.

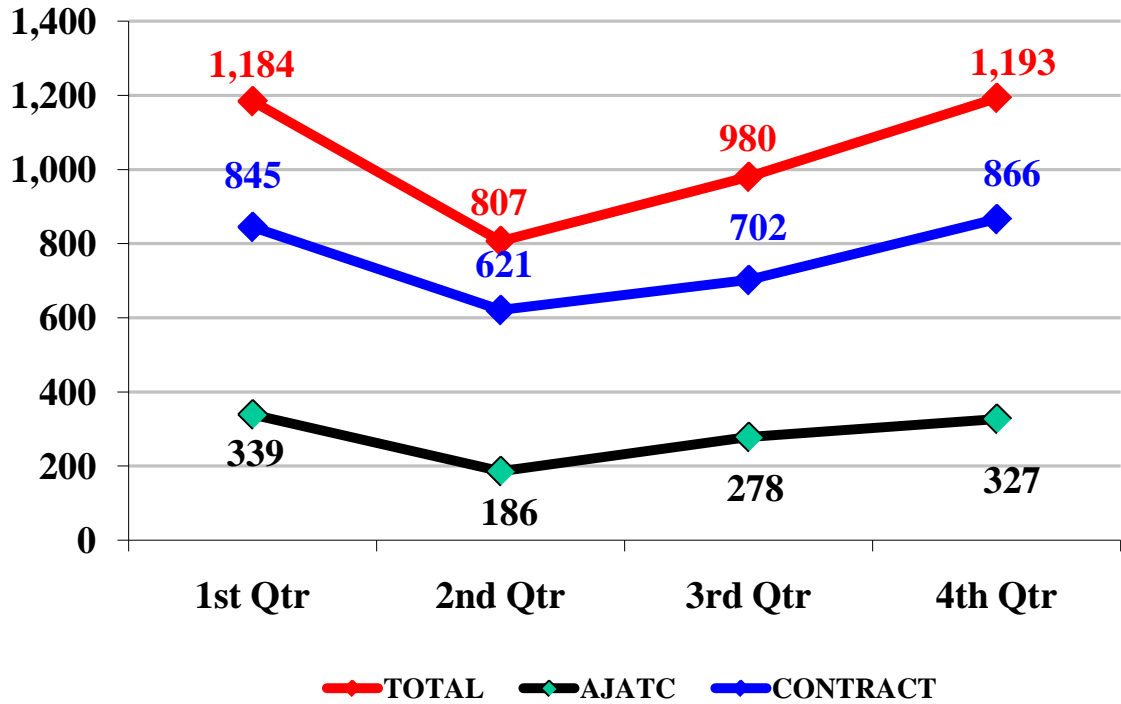
**Categories of Cases Accepted**



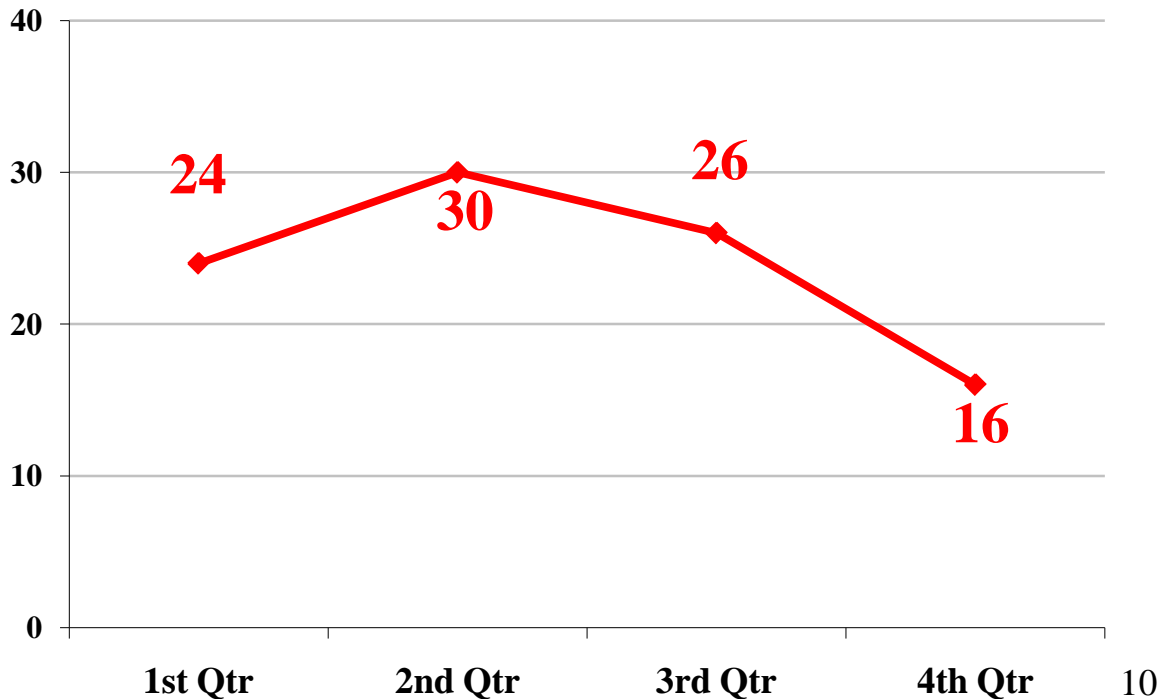
**Status of Cases Accepted**



# Incident Reports for FY 2010

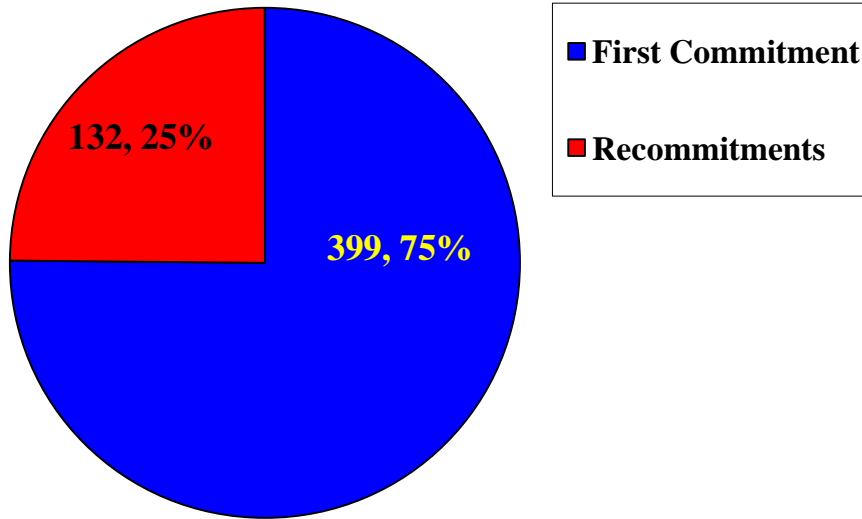


# Incidents Reported to Hotline for FY 2010



# COMMITMENTS

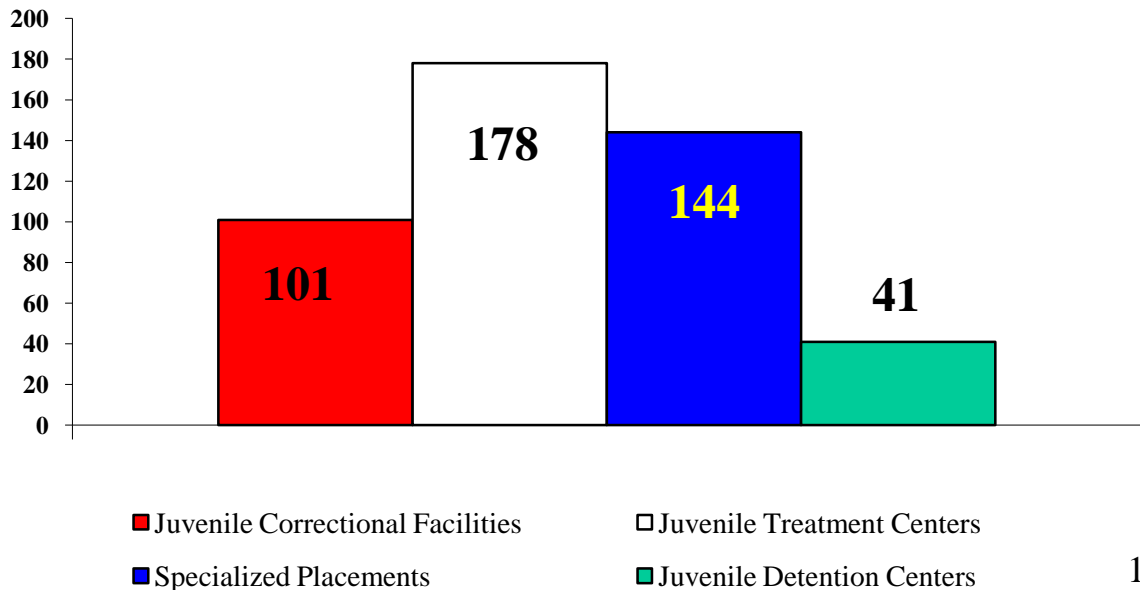
## All Juveniles Committed During the Fiscal Year



Recommitments encompass all juveniles who have previously been committed to DYS and received another order of commitment during the fiscal year.

## Average Length of Stay in Days for Juveniles Released

July 2009 - June 2010



# Commitments by District

July 2009 – June 2010

Judicial District	Number of Commitments			Judicial District	Number of Commitments		
	FY 2008	FY 2009	FY 2010		FY 2008	FY 2009	FY 2010
1st	25	33	24	12th	37	40	36
2nd	59	55	35	13th	21	33	42
3rd	8	15	5	14th	5	7	3
4th	12	14	14	15th	7	4	6
5th	22	16	5	16th	11	20	8
6th	99	102	77	17th	6	7	14
7th	28	32	18	18th East	26	17	17
8th North	20	25	28	18th West	0	0	1
8th South	23	18	10	19th East	5	2	2
9th East	15	8	5	19th West	18	13	11
9th West	19	17	11	20th	25	19	10
10th	49	82	49	21st	15	7	6
11th East	9	2	2	22nd	18	17	23
11th West	8	25	66	23rd	8	6	3
				<b>State Total</b>	<b>598</b>	<b>636</b>	<b>531</b>

Commitments encompass all juveniles who have been committed to DYS including juveniles currently in custody who have received another order of commitment during the fiscal year.