

**Division of Youth Services
Arkansas Child Welfare Report Card
In Compliance with Act 1222 of 1995
Report Period July 2006 – June 2007**



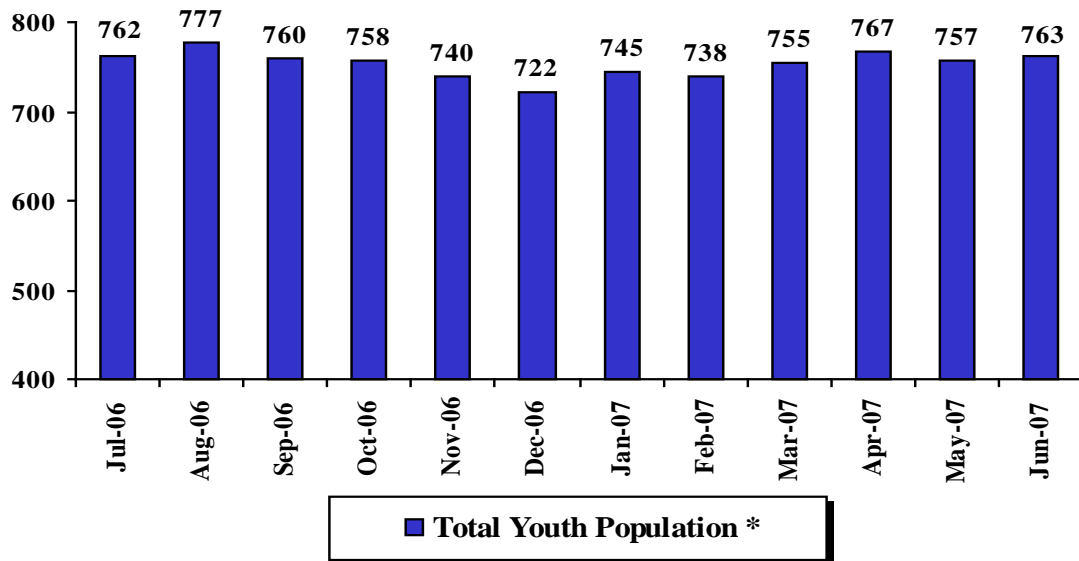
Executive Summary

For FY 07 the age and gender of committed juvenile offenders remained overwhelmingly males between 15 and 17 years of age. In FY 07 there was a 6% increase in Caucasian youth and a 10% decrease in African-American youth committed to DYS. In FY 07 there was also a 2% increase in the number of youth recommitted to DYS and the number of youth committed for felony type offenses increased by 1%. Of greatest significance is the trend in the number of youth committed, as the Division started counting all commitments regardless of case. The number of commitments to DYS from FY 2004 through FY 2007 averaged around 594 annually. In FY 2007 commitments decreased by 4% from the prior year.

With all DYS facilities operating at full capacity the increased commitments have taxed our ability to intake and place youth. In the short term the most viable counter to increased commitments is to increase releases by reducing the length of time in placement. One consequence of the increased commitments is an increase in the use of local juvenile detention centers to hold juveniles committed to DYS pending available space for placement or intake processing.

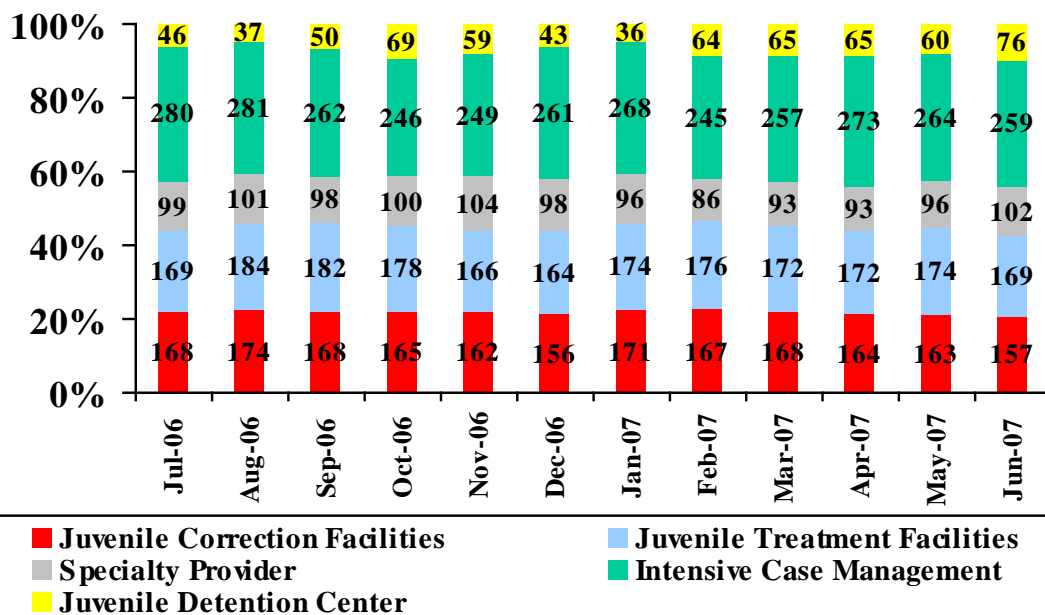
Population Profiles July 2006 - June 2007

Total Population in DYS Custody

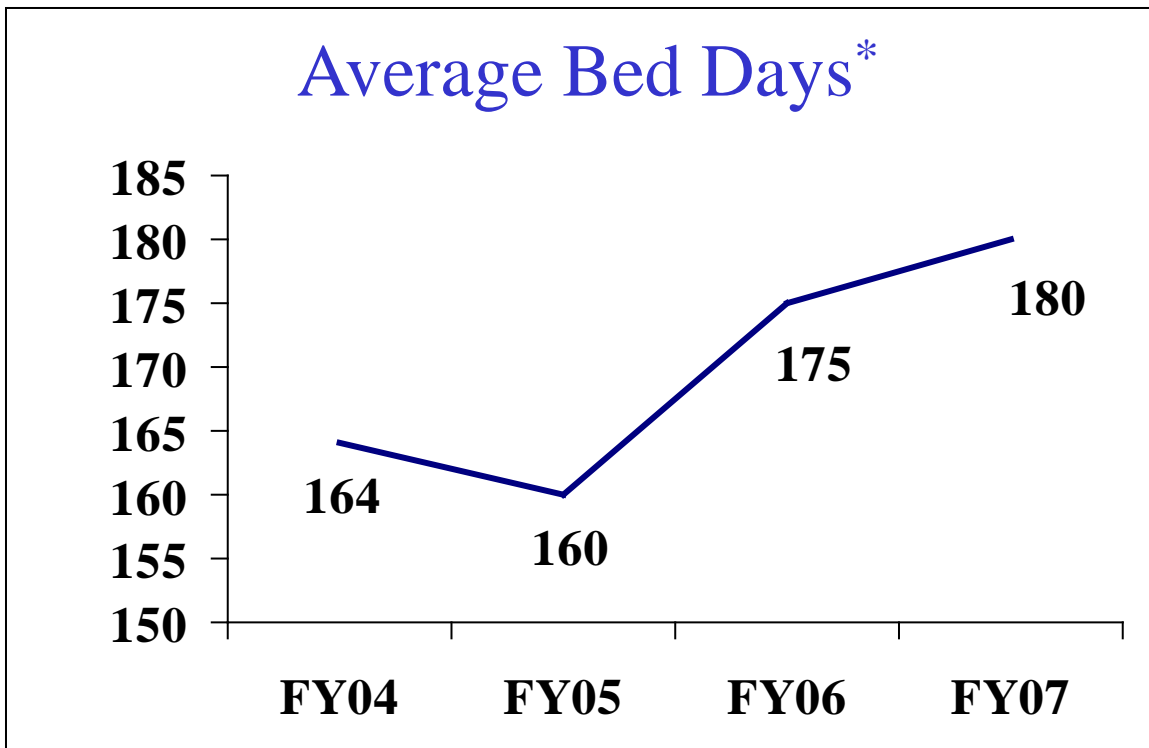
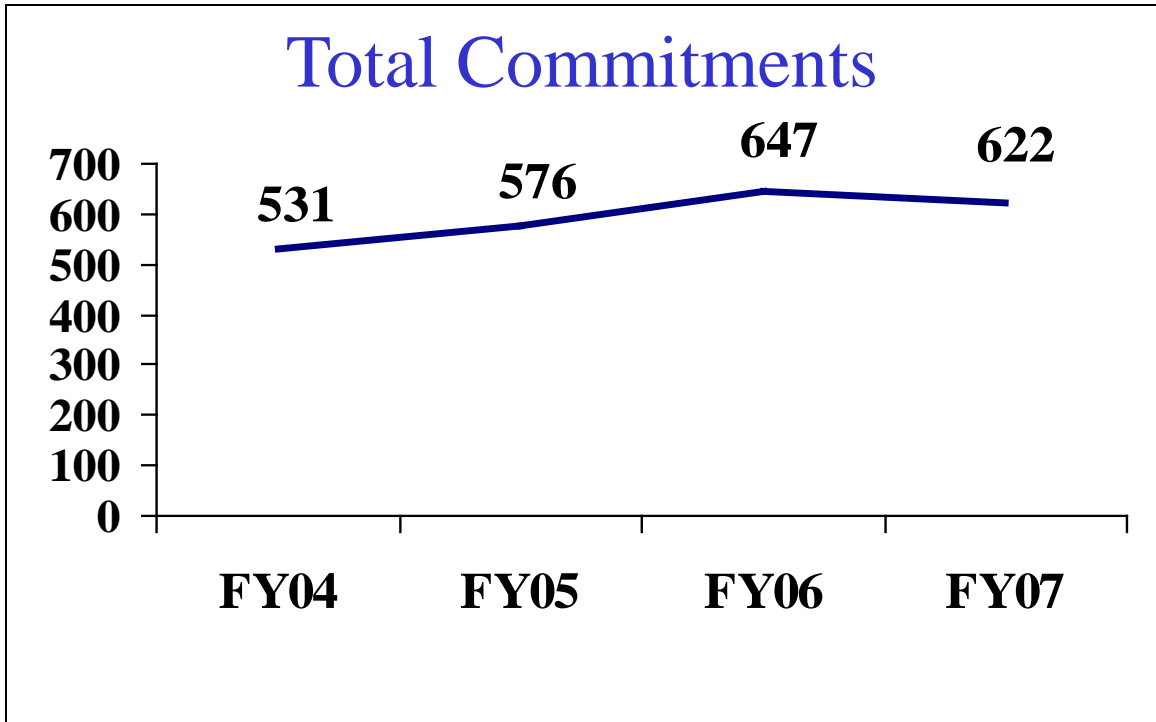


*Total Youth Population is based on the population count on the first day of the month.

Population by Program Type

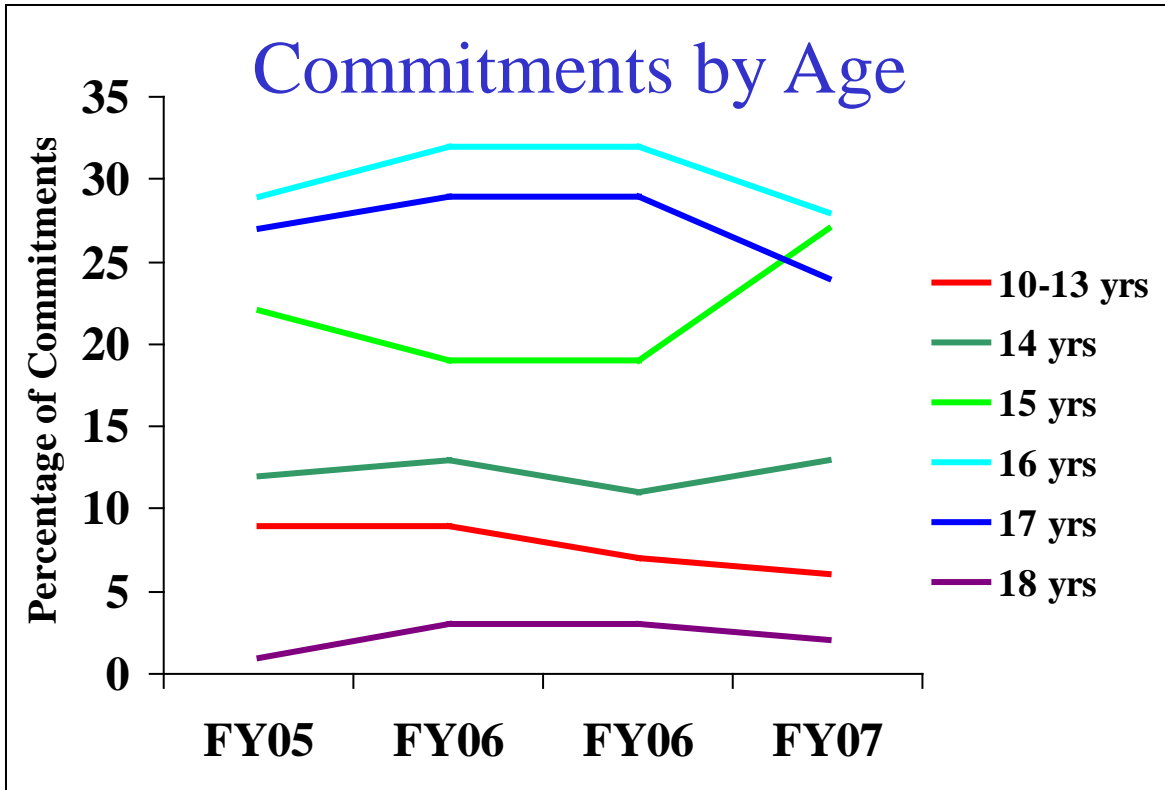


Profiles of Juveniles Committed
July 2006 - June 2007

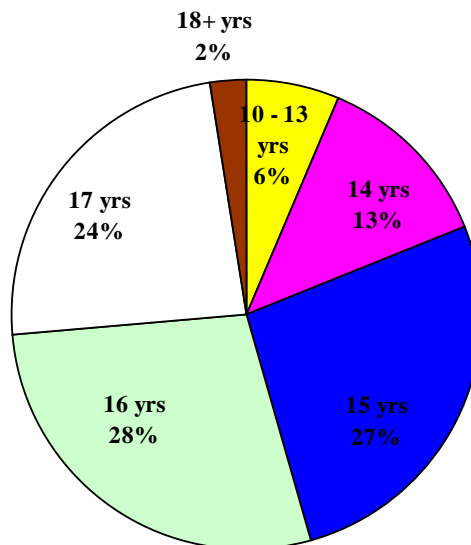


* Average Bed Days captures all releases from residential programs during the fiscal year.

Profiles of Juveniles Committed
July 2006 - June 2007

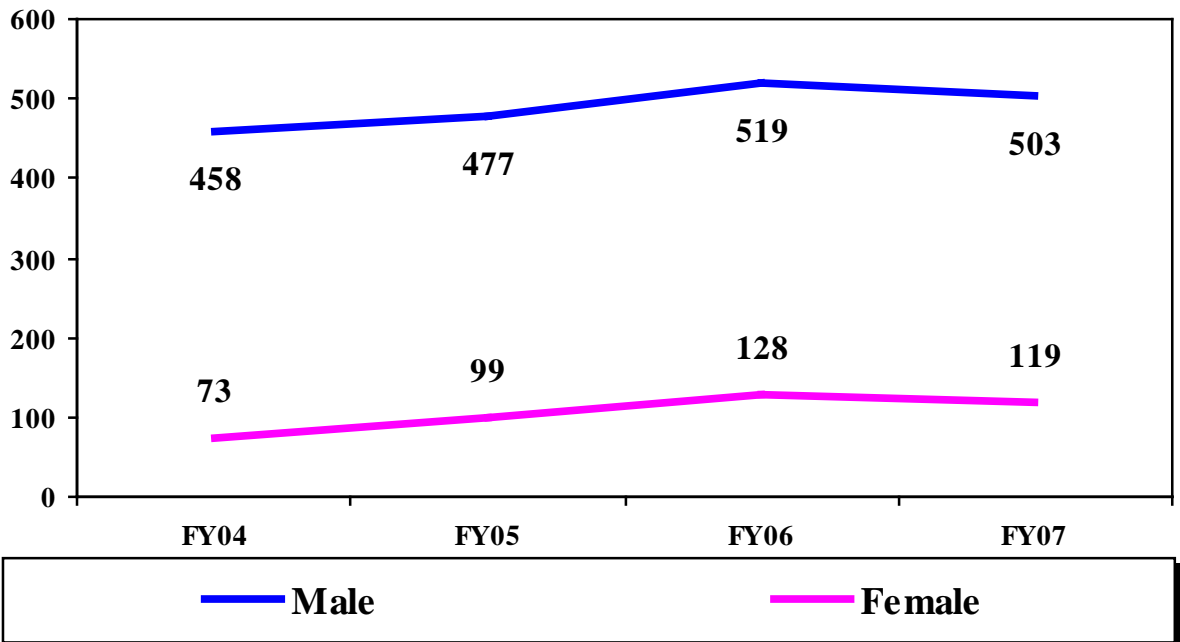


FY07 Commitments by Age

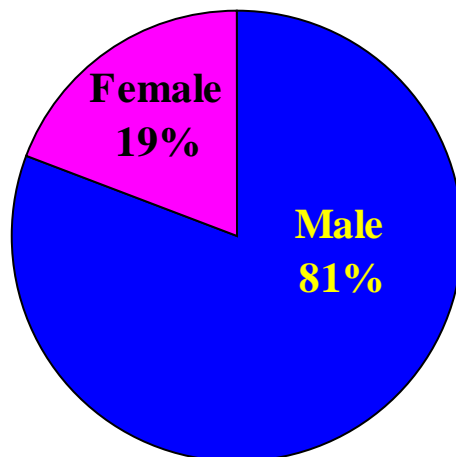


Profiles of Juveniles Committed
July 2006 - June 2007

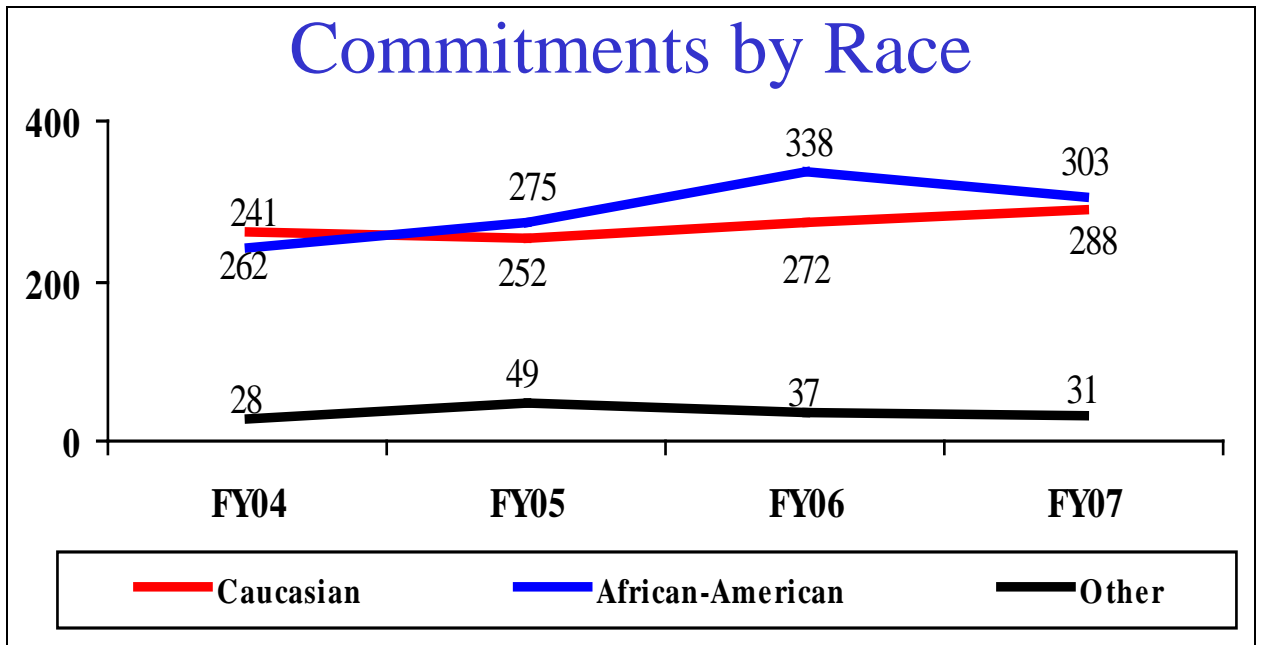
Commitments by Gender



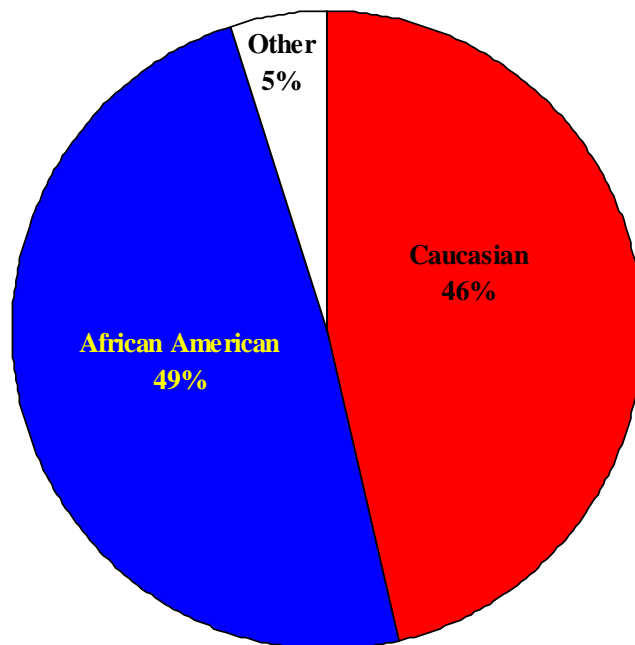
FY07 Commitments by Gender



Profiles of Juveniles Committed
July 2006 - June 2007

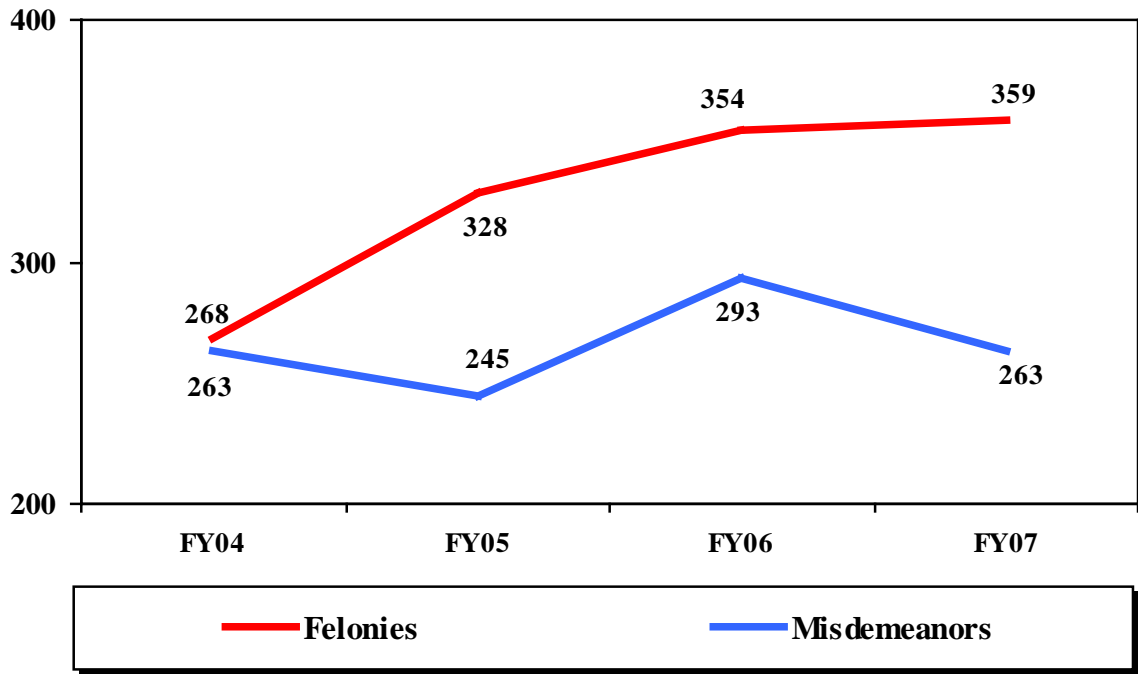


FY07 Commitments by Race

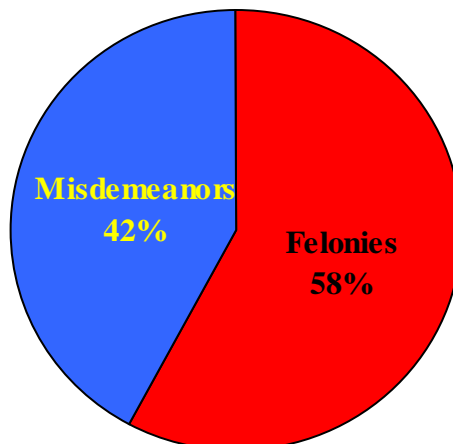


**Profiles of Juveniles Committed
July 2006 - June 2007**

Commitments by Offense Group



FY07 Commitments by Offense Group



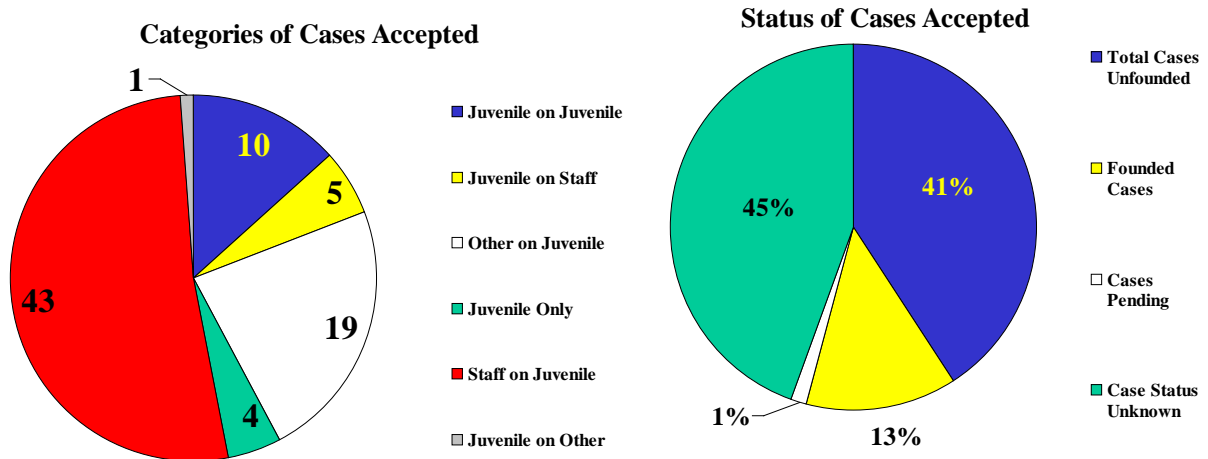
INCIDENTS

Incidents Accepted by the Child Abuse Hotline

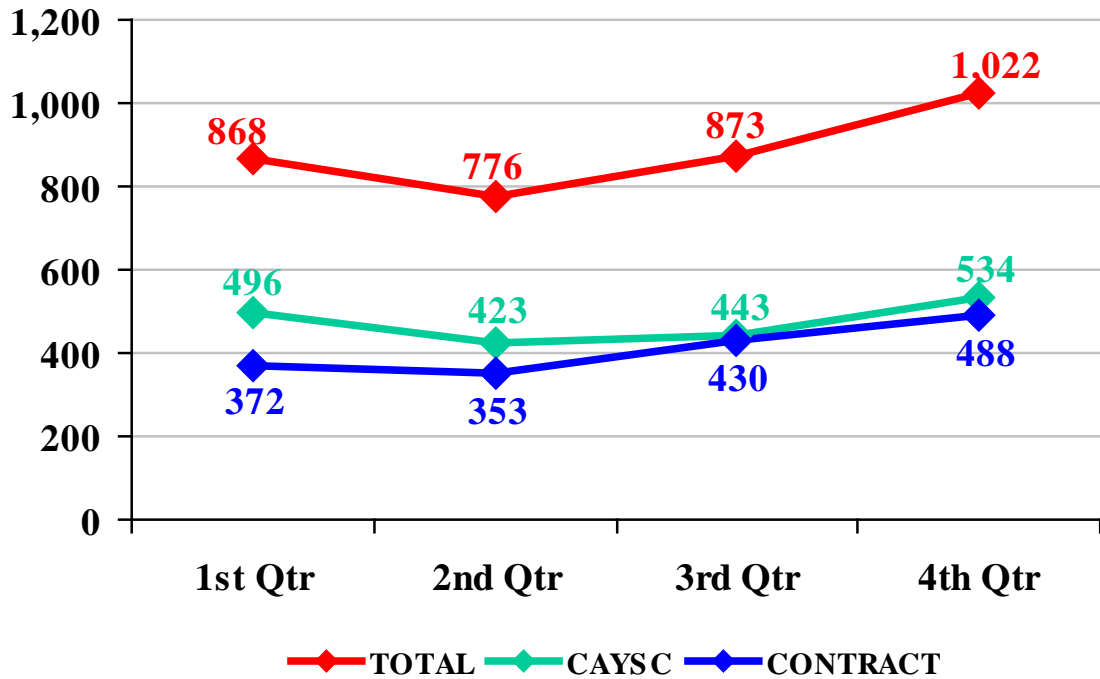
July 2006 - June 2007

| REFERRED TO HOTLINE | | INCIDENTS ACCEPTED BY HOTLINE | | | |
|---------------------|-----------------------|-------------------------------|---------------|-----------------|----------------------|
| 167 | | 83 | | | |
| Incident Type | Cases Accepted by ASP | Cases Pending | Cases Founded | Cases Unfounded | Case Status Unknown* |
| ASSAULT | 3 | 0 | 0 | 1 | 2 |
| DISORDERLY CONDUCT | 4 | 1 | 0 | 1 | 2 |
| FIGHT | 0 | 0 | 0 | 0 | 0 |
| NEGLECT | 3 | 0 | 0 | 1 | 2 |
| OTHER | 15 | 0 | 1 | 2 | 12 |
| PHYSICAL ABUSE | 43 | 0 | 9 | 21 | 13 |
| SEXUAL ABUSE | 12 | 0 | 1 | 7 | 4 |
| SEXUAL MISCONDUCT | 3 | 0 | 0 | 1 | 2 |
| TOTAL | 83 | 1 | 11 | 34 | 37 |

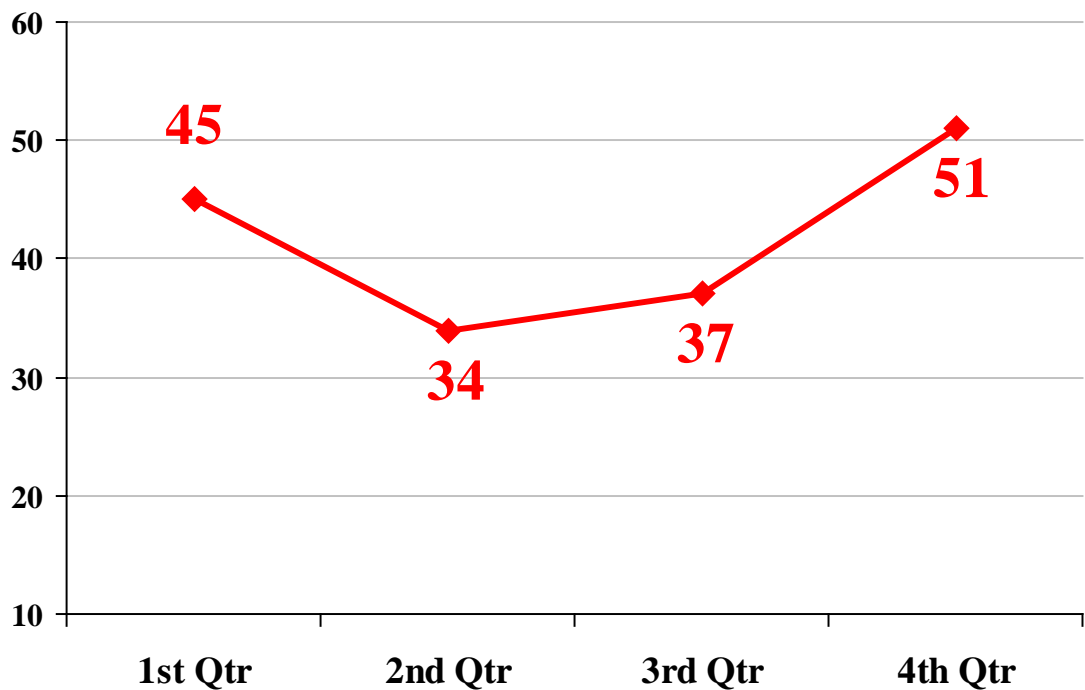
* Since the Hotline and the Investigations unit are two separate sections within the Arkansas State Police, the Hotline may accept an incident called in, then later the incident will not be investigated by the Investigations Unit after review of the circumstances. The DYS IAU never receives a follow-up on these reports to know whether they were ever investigated. Some of these incidents occurred prior to the juvenile being committed to DYS. The IAU does not receive notification of the findings in these incidents. Some incidents that are reported in one quarter may not be finalized by the State Police until sometime within the next quarter.



Incident Reports for FY 2007

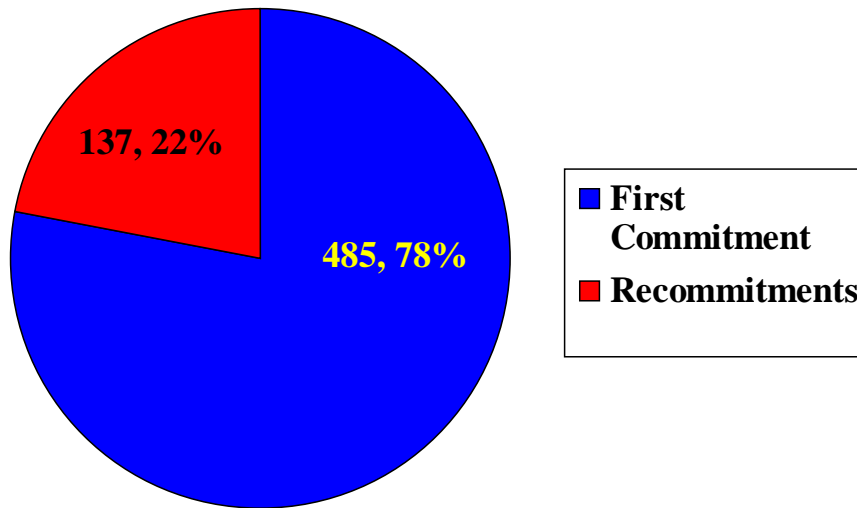


Incidents Reported to Hotline for FY 2007



COMMITMENTS

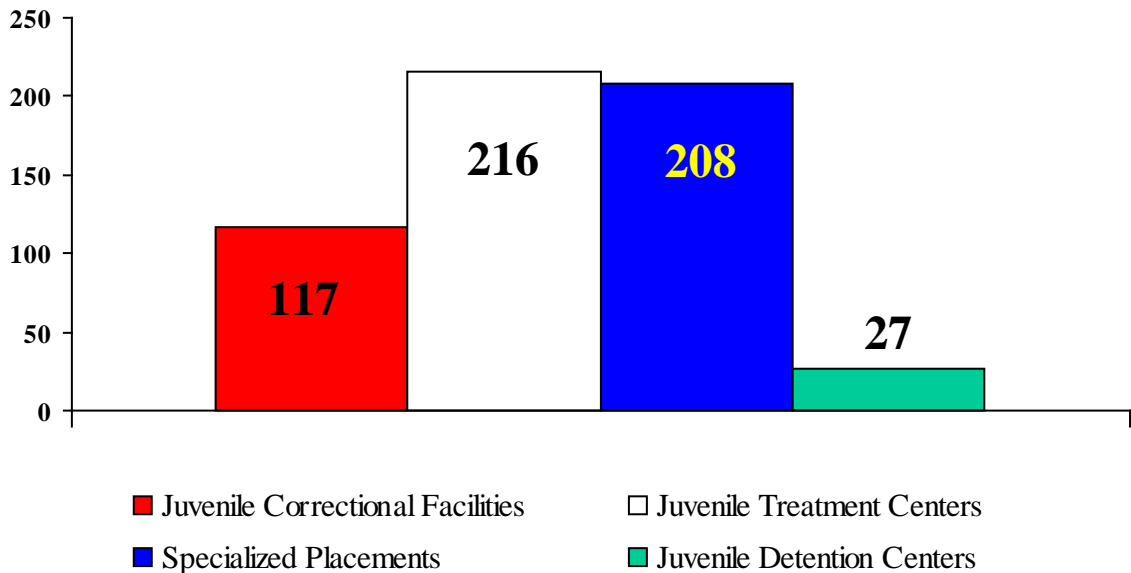
All Juveniles Committed During the Fiscal Year



Recommitments encompass all juveniles who have previously been committed to DYS and received another order of commitment during the fiscal year.

Average Length of Stay in Days for Juveniles Released

July 2006 - June 2007



Commitments by District

July 2006 – June 2007

| Judicial District | Number of Commitments | | | Judicial District | Number of Commitments | | |
|-------------------|-----------------------|---------|---------|--------------------|-----------------------|------------|------------|
| | FY 2005 | FY 2006 | FY 2007 | | FY 2005 | FY 2006 | FY 2007 |
| 1st | 11 | 16 | 22 | 12th | 28 | 28 | 38 |
| 2nd | 80 | 63 | 38 | 13th | 32 | 49 | 52 |
| 3rd | 2 | 3 | 10 | 14th | 7 | 4 | 2 |
| 4th | 33 | 35 | 20 | 15th | 5 | 15 | 10 |
| 5th | 11 | 13 | 17 | 16th | 7 | 8 | 14 |
| 6th | 126 | 178 | 115 | 17th | 5 | 5 | 4 |
| 7th | 21 | 20 | 38 | 18th East | 13 | 21 | 27 |
| 8th North | 23 | 24 | 12 | 18th West | 2 | 0 | 0 |
| 8th South | 13 | 16 | 10 | 19th East | 1 | 5 | 3 |
| 9th East | 2 | 9 | 6 | 19th West | 7 | 32 | 29 |
| 9th West | 20 | 14 | 17 | 20th | 13 | 19 | 20 |
| 10th | 9 | 12 | 59 | 21st | 25 | 9 | 16 |
| 11th East | 2 | 14 | 10 | 22nd | 17 | 20 | 16 |
| 11th West | 10 | 8 | 9 | 23rd | 6 | 7 | 8 |
| | | | | State Total | 531 | 647 | 622 |

FY 2006 and FY2007 Commitments encompass all juveniles who have been committed to DYS including juveniles currently in custody who have received another order of commitment during the fiscal year.