

**Division of Youth Services  
Arkansas Child Welfare Report Card  
In Compliance with Act 1222 of 1995  
Report Period July 2005 – June 2006**



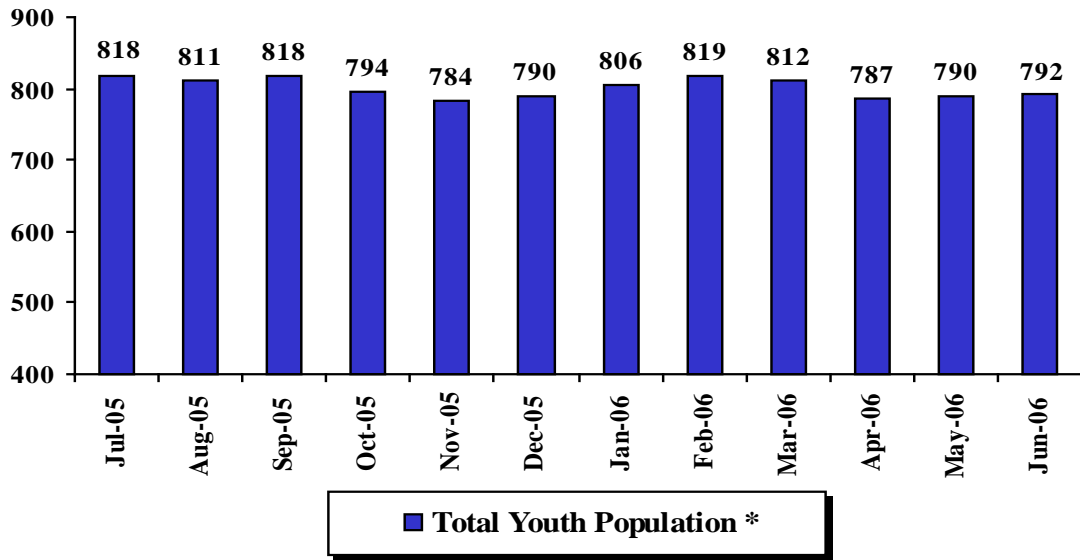
## **Executive Summary**

For FY 06 the age and gender of committed juvenile offenders remained overwhelmingly males between 15 and 17 years of age. In FY 06 there was a 35% increase in Caucasian youth and a 1% decrease in African-American youth committed to DYS. In FY 06 there was also a 12% increase of youth recommitted to DYS and the number of youth committed for felony type offenses decreased by 2%. Of greatest significance is the trend in the number of youth committed, as the Division started counting all commitments regardless of case. The number of commitments to DYS in FY 2002 and through FY 2004 averaged around 525 annually. Commitments to DYS have increased. In FY 2005 commitments increased by 8% from the prior year and this year DYS has experienced a 13% increase in commitments.

With all DYS facilities operating at full capacity the increased commitments have taxed our ability to intake and place youth. In the short term the most viable counter to increased commitments is to increase releases by reducing the length of time in placement. One consequence of the increased commitments is an increase in the use of local juvenile detention centers to hold juveniles committed to DYS pending available space for placement or intake processing.

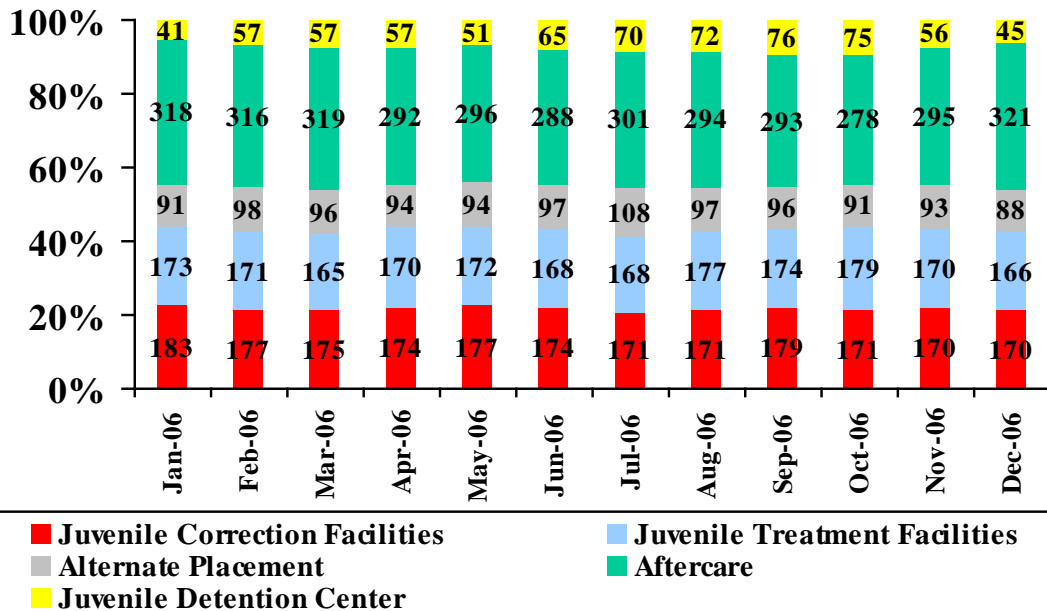
**Population Profiles  
July 2005 - June 2006**

## Total Population in DYS Custody

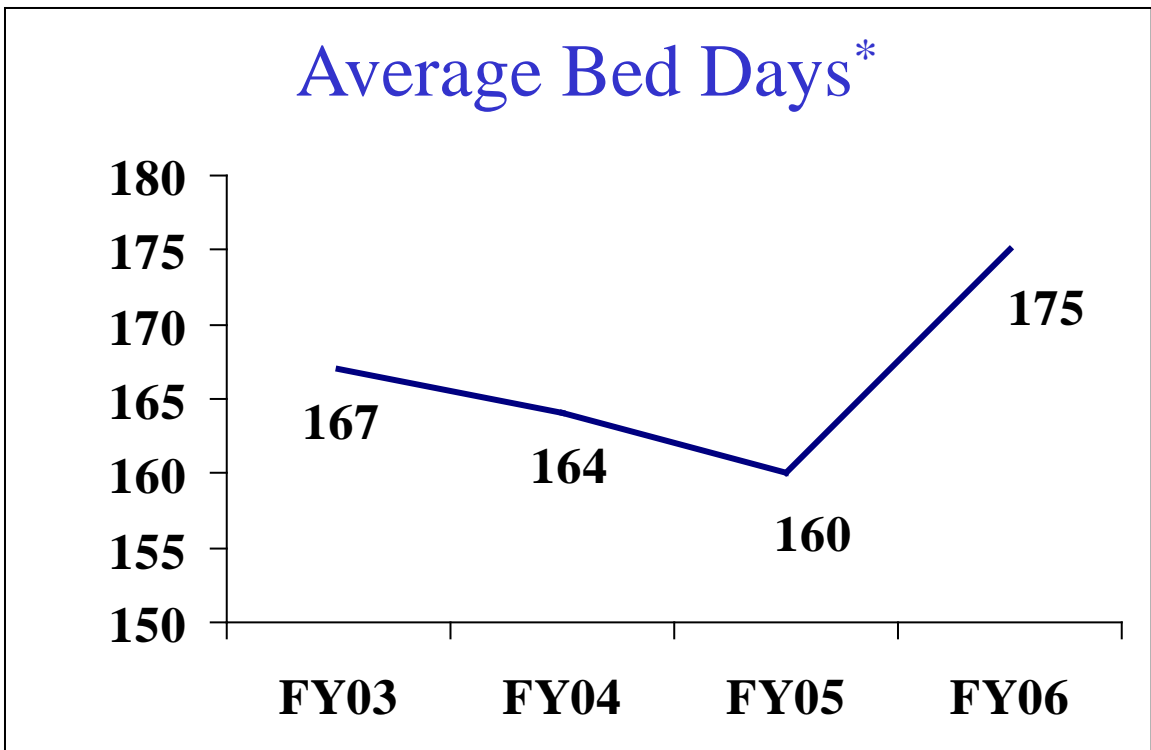
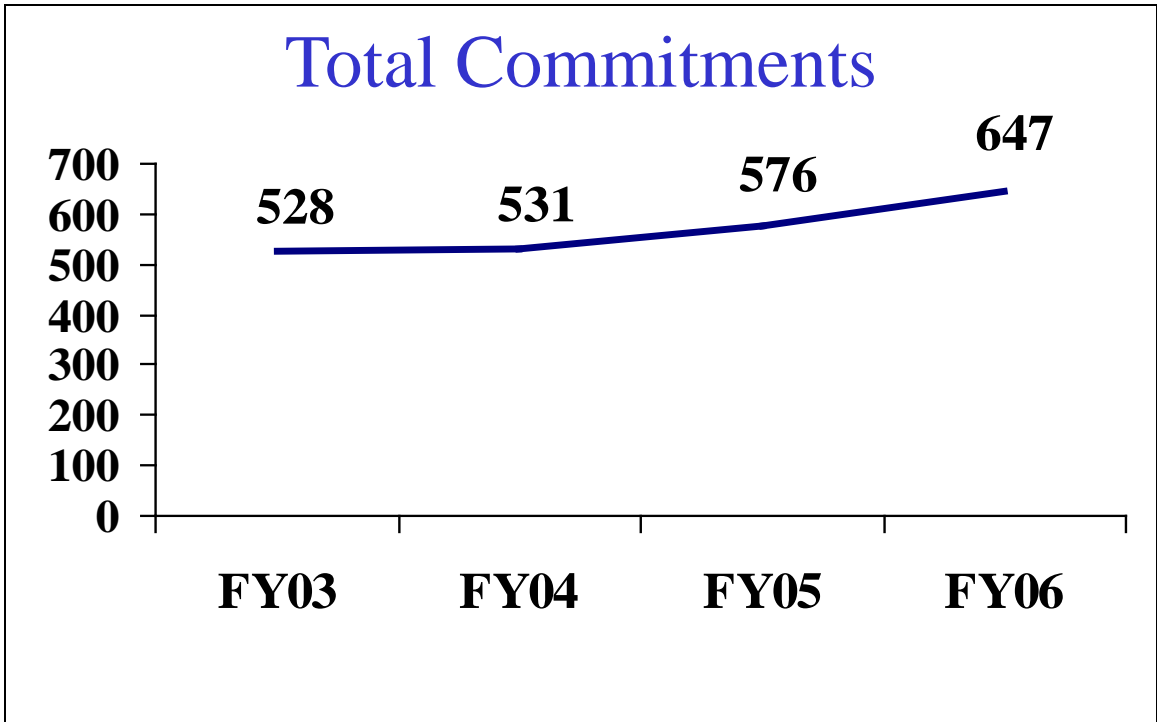


\*Total Youth Population is based on the population count on the first day of the month.

## Population by Program Type

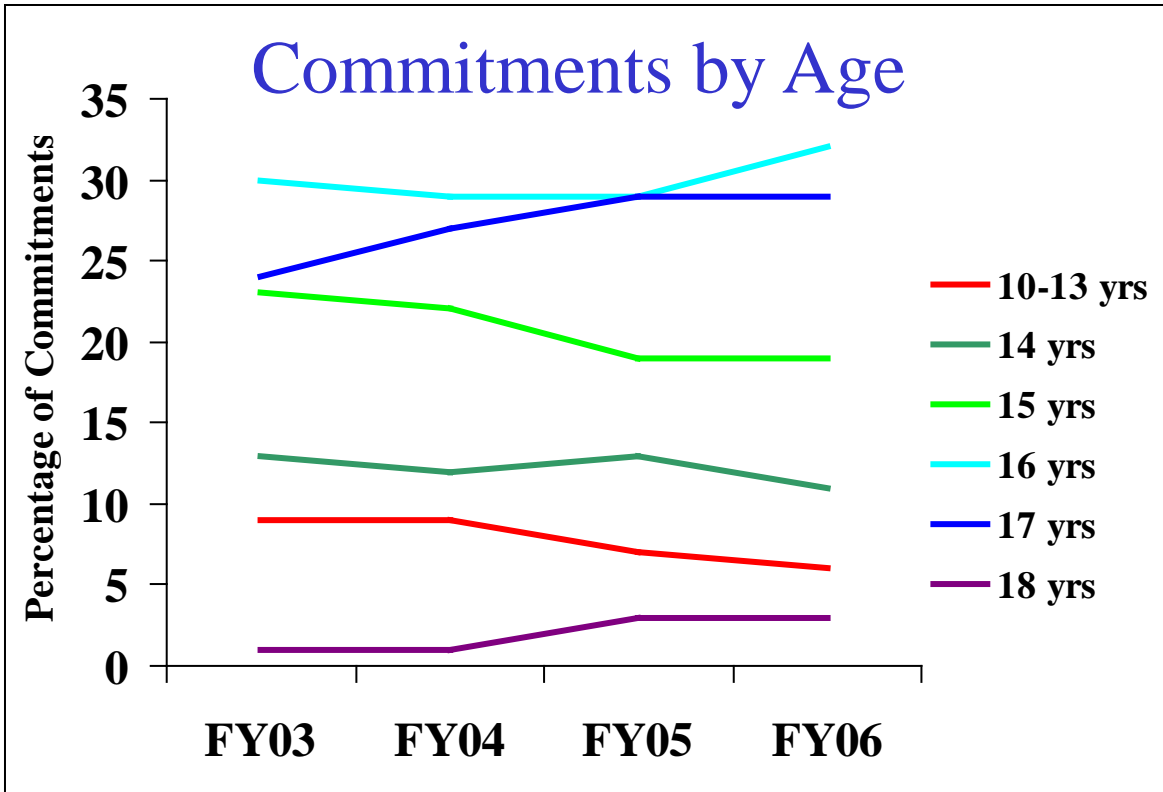


**Profiles of Juveniles Committed  
July 2005 - June 2006**

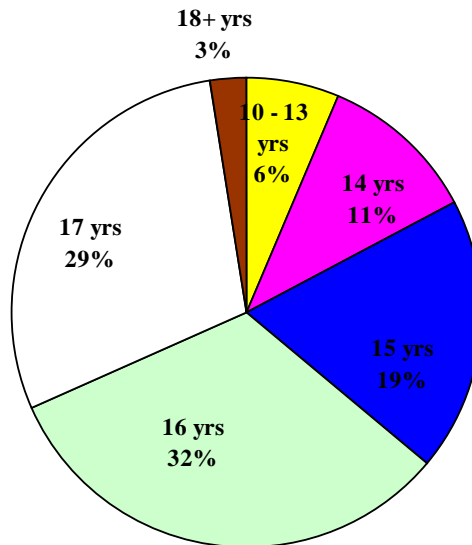


\* Average Bed Days captures all releases from residential programs during the fiscal year.

**Profiles of Juveniles Committed  
July 2005 - June 2006**

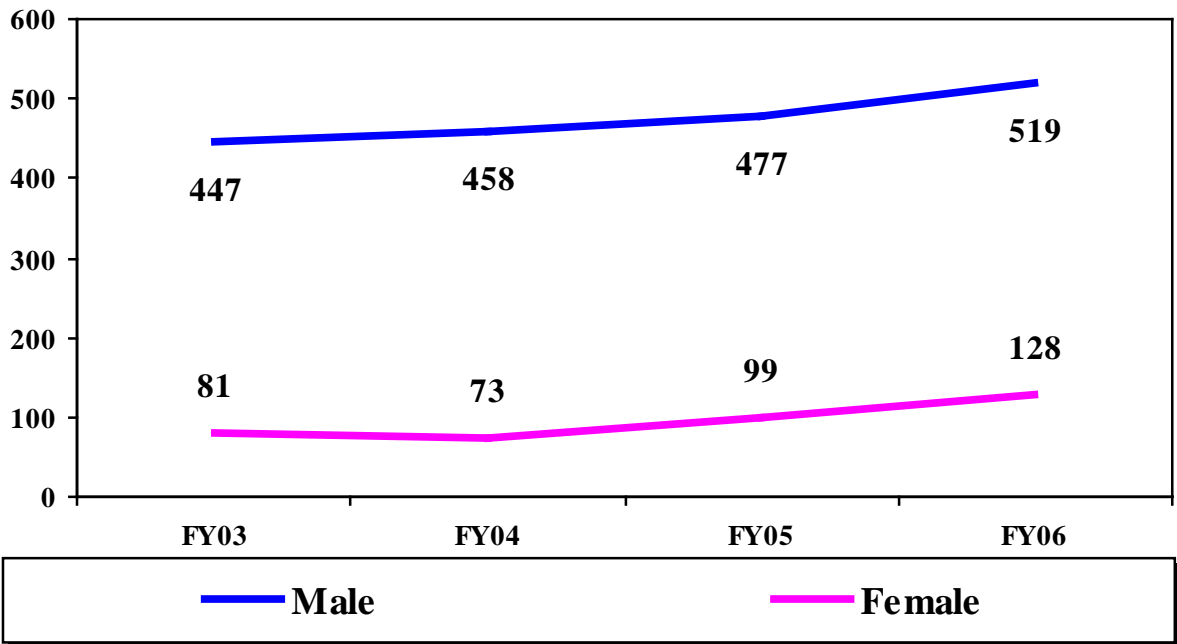


## FY06 Commitments by Age

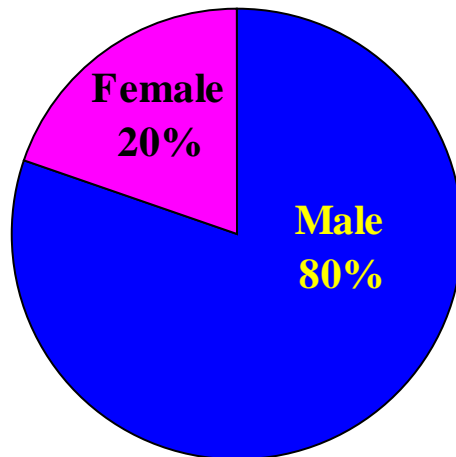


**Profiles of Juveniles Committed  
July 2005 - June 2006**

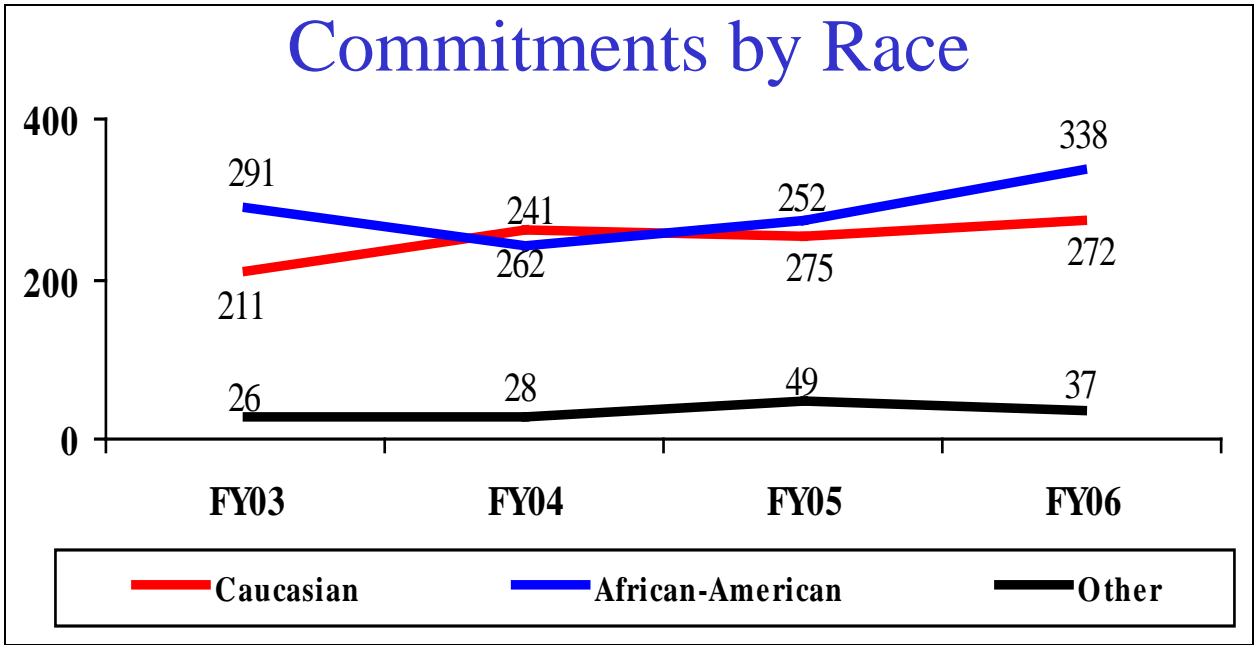
## Commitments by Gender



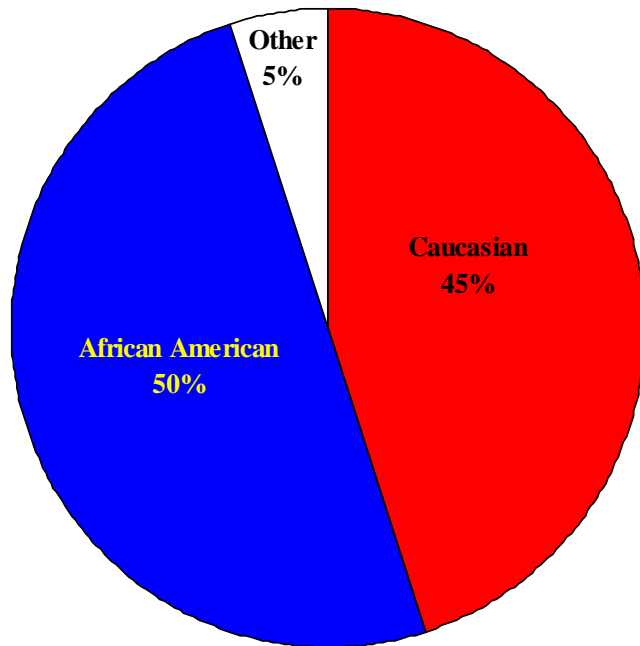
## FY06 Commitments by Gender



**Profiles of Juveniles Committed  
July 2005 - June 2006**

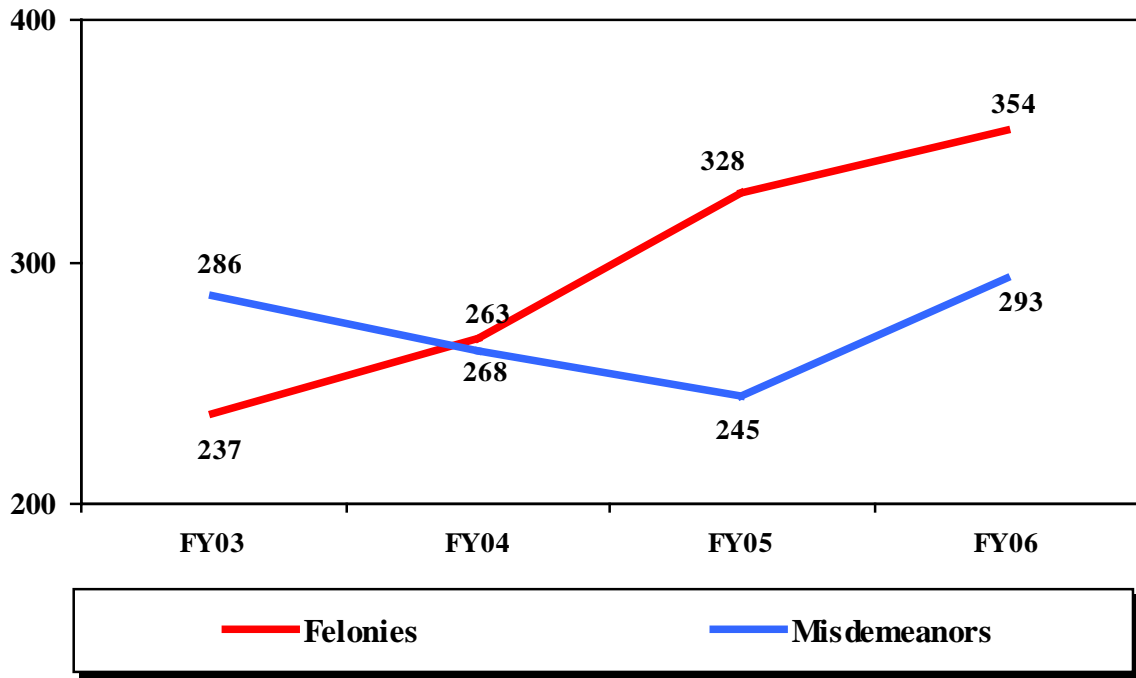


### FY06 Commitments by Race

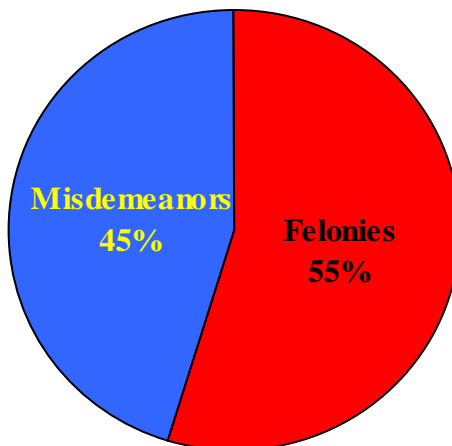


**Profiles of Juveniles Committed  
July 2005 - June 2006**

## Commitments by Offense Group



## FY06 Commitments by Offense Group





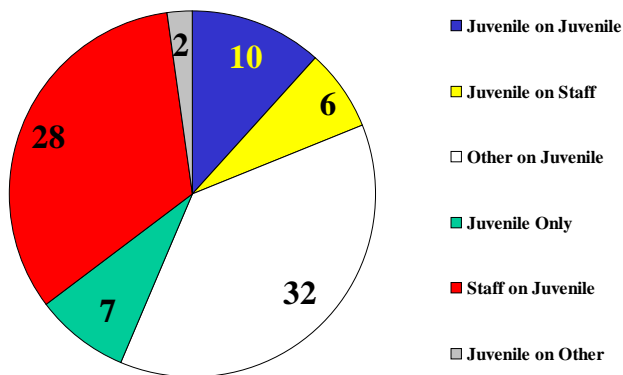
# INCIDENTS

## Incidents Accepted by the Child Abuse Hotline July 2005 - June 2006

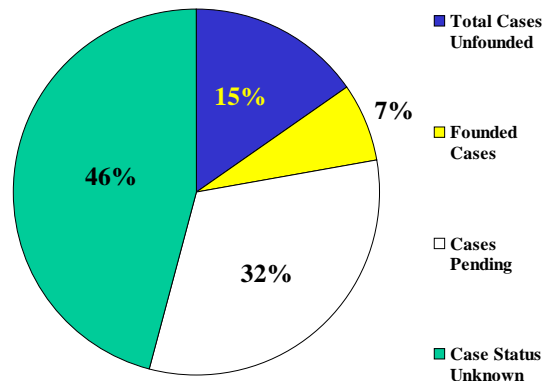
REFERRED TO HOTLINE						INCIDENTS ACCEPTED BY HOTLINE
162						85
Incident Type	Cases Accepted by ASP	Cases Pending	Cases Founded	Cases Unfounded	Case Status Unknown*	
ASSAULT	0	0	0	0	0	
DISORDERLY CONDUCT	5	0	1	3	1	
FIGHT	1	1	0	0	0	
NEGLECT	4	2	0	0	2	
OTHER	15	1	2	0	12	
PHYSICAL ABUSE	32	12	2	6	12	
SEXUAL ABUSE	26	11	1	3	11	
SEXUAL MISCONDUCT	2	0	0	1	1	
<b>TOTAL</b>	<b>85</b>	<b>27</b>	<b>6</b>	<b>13</b>	<b>39</b>	

\* Since the Hotline and the Investigations unit are two separate sections within the Arkansas State Police, the Hotline may accept an incident called in, then later the incident will not be investigated by the Investigations Unit after review of the circumstances. The DYS IAU never receives a follow-up on these reports to know whether they were ever investigated. Some of these incidents occurred prior to the juvenile being committed to DYS. The IAU does not receive notification of the findings in these incidents. Some incidents that are reported in one quarter may not be finalized by the State Police until sometime within the next quarter.

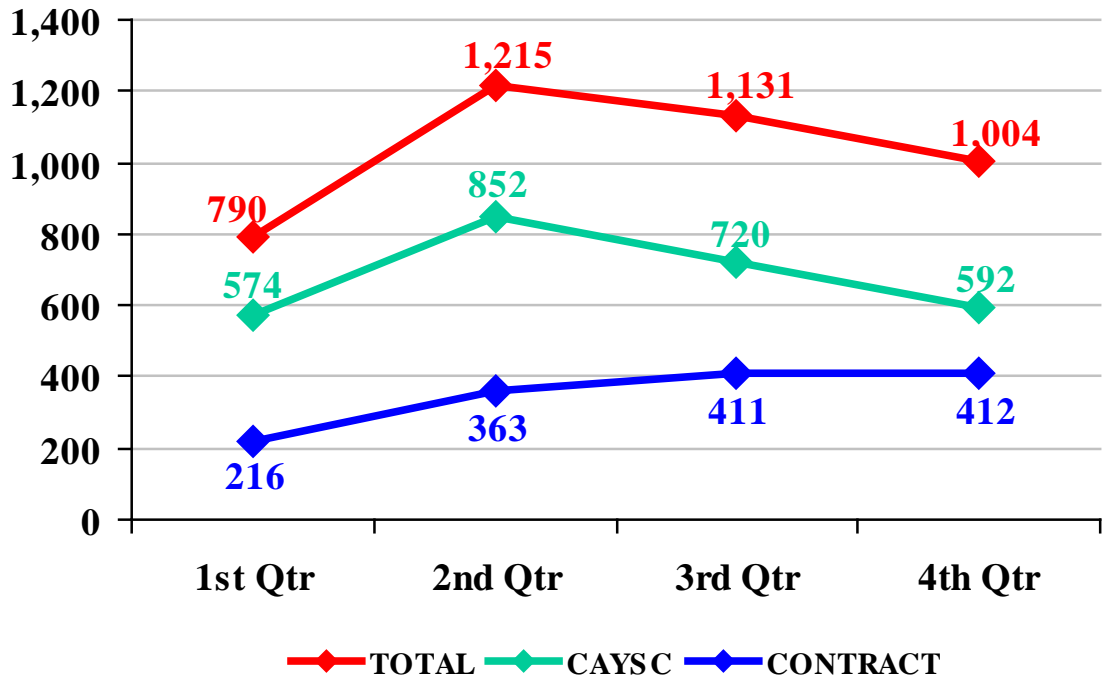
**Categories of Cases Accepted**



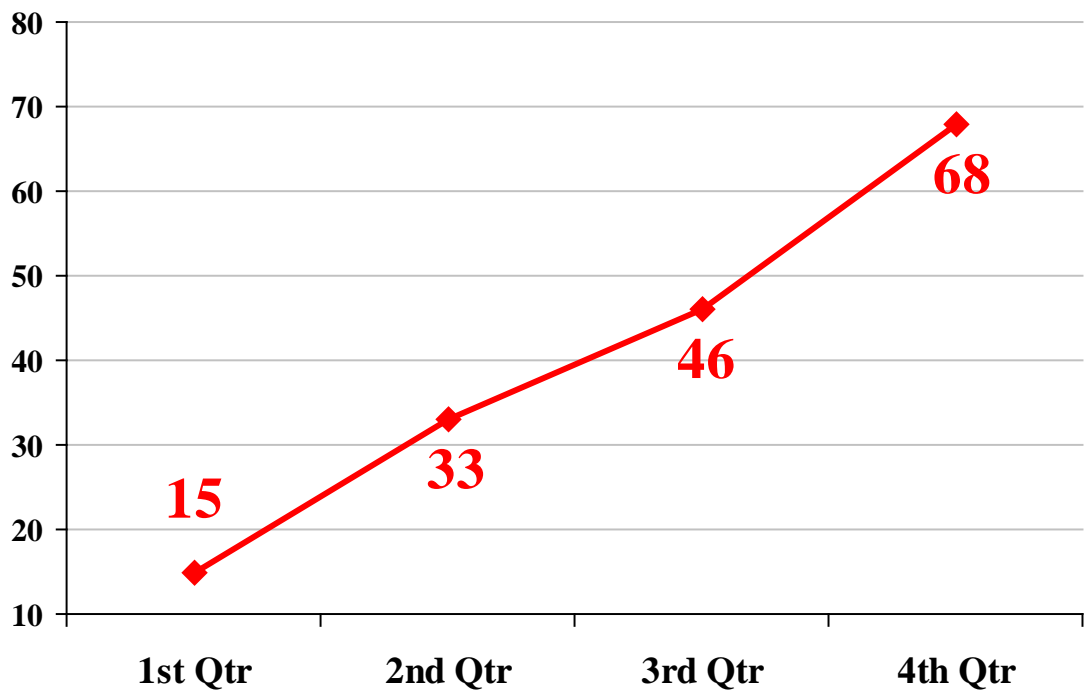
**Status of Cases Accepted**



# Incident Reports for FY 2006

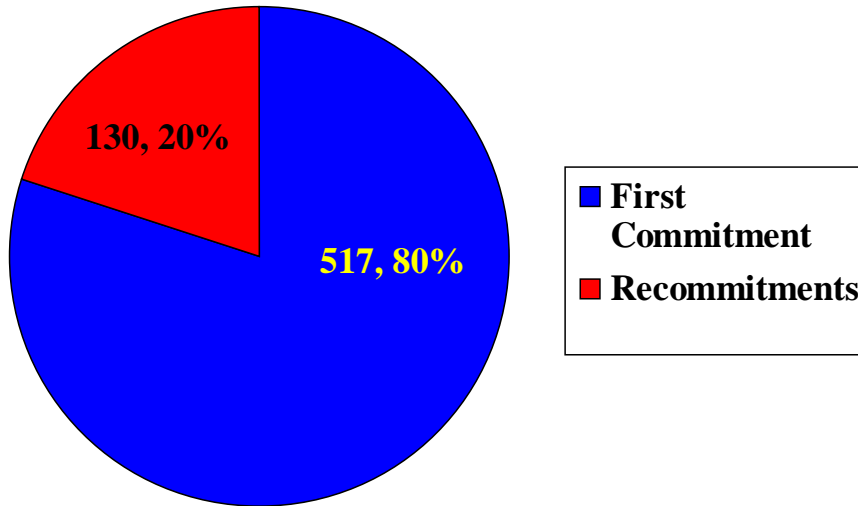


# Incidents Reported to Hotline for FY 2006



# COMMITMENTS

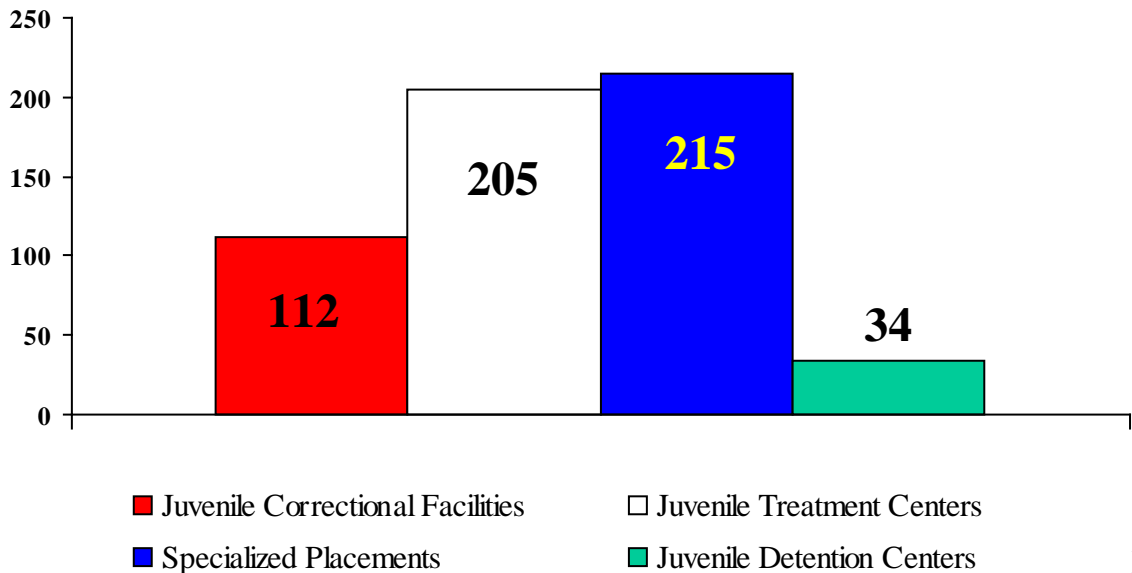
## All Juveniles Committed During the Fiscal Year



Recommittments encompass all juveniles who have previously been committed to DYS and received another order of commitment during the fiscal year.

## Average Length of Stay in Days for Juveniles Released

July 2005 - June 2006



# Commitments by District

July 2005 – June 2006

Judicial District	Number of Commitments			Judicial District	Number of Commitments		
	FY 2004	FY 2005	FY 2006*		FY 2004	FY 2005	FY 2006*
1st	11	11	16	12th	29	28	28
2nd	61	80	63	13th	36	32	49
3rd	3	2	3	14th	2	7	4
4th	36	33	35	15th	10	5	15
5th	12	11	13	16th	9	7	8
6th	150	126	178	17th	1	5	5
7th	18	21	20	18th East	20	13	21
8th North	29	23	24	18th West	2	2	0
8th South	11	13	16	19th East	4	1	5
9th East	4	2	9	19th West	27	7	32
9th West	13	20	14	20th	23	13	19
10th	9	9	12	21st	11	25	9
11th East	1	2	14	22nd	12	17	20
11th West	21	10	8	23rd	10	6	7
				<b>State Total</b>	<b>575</b>	<b>531</b>	<b>647</b>

FY 2006 Commitments encompass all juveniles who have been committed to DYS including juveniles currently in custody who have received another order of commitment during the fiscal year.