

**Division of Youth Services
Arkansas Child Welfare Report Card
In Compliance with Act 1222 of 1995
Report Period July 2004 – June 2005**



Executive Summary

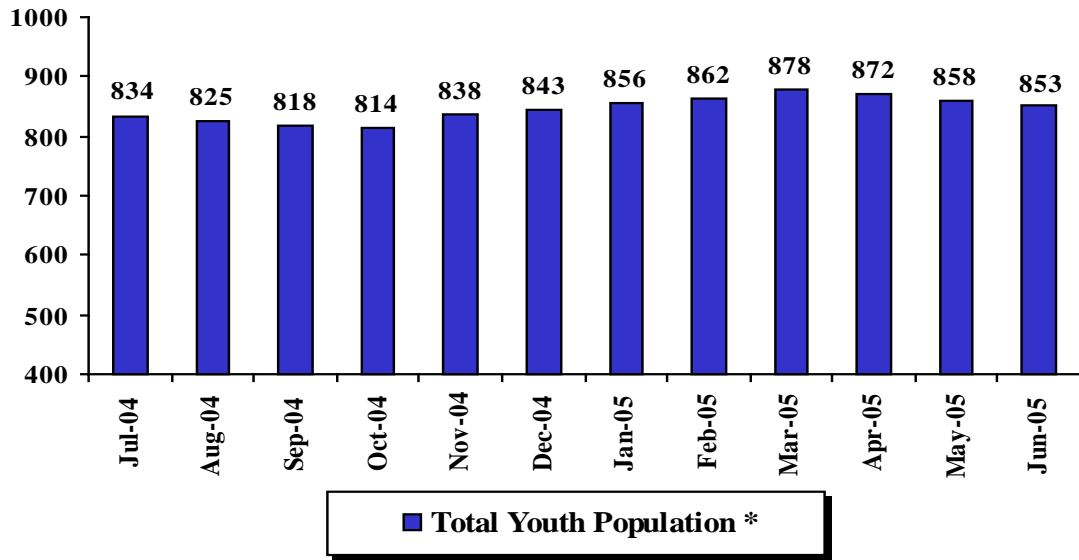
For FY 05 the age and gender of committed juvenile offenders remained overwhelmingly males between 15 and 17 years of age. For the prior two years the percentage of Caucasian youth committed had been increasing and commitments for African-American youth were decreasing. This trend was reversed in FY 05 with a 3% decrease in Caucasian youth and a 13% increase in African-American youth committed to DYS. In FY 05 there was also a 4% increase of youth recommitted to DYS and the number of youth committed for felony type offenses increased by 22%. Of greatest significance is the trend in the number of youth committed. In FY 2000, 752 juveniles, and in FY 2001 just less than 600 juveniles, were committed to DYS. The number of commitments to DYS fell again in FY 2002 and through FY 2004 averaging around 525 annually. Commitments to DYS have increased. In FY 2005 commitments increased by 8% from the prior year and over the past four years DYS has experienced a 12% increase in commitments.

With all DYS facilities operating at full capacity the increased commitments have taxed our ability to intake and place youth. In the short term the most viable counter to increased commitments is to increase releases by reducing the length of time in placement. In FY 2005 DYS reduced the average length of stay in the regional facilities by 10% (201 from 222 days) and almost 20% (75 from 93 days) at Alexander. This reduced length of stay has not been the result of a specific policy change in the length of stay the programs are designed for, but rather an examination of specific youth on a case-by-case basis with a decision to return to community supervision youth who have been particularly successful in the residential treatment. Nevertheless, one consequence of the increased commitments is an increase in the use of local juvenile detention centers to hold juveniles committed to DYS pending available space for placement or intake processing.

Short term measures to help address this trend include adding 10 beds within the current Dermott juvenile correctional facility campus and expanding the practice of doing the psychological and psychosexual evaluations while youth are in detention, thereby eliminating the need to do that part of the intake process at the Alexander facility. DYS is also having a population projection done to forecast this trend and provide needed information to allow for good long term planning for how we should manage the number and type of youth that will be committed to the state's care.

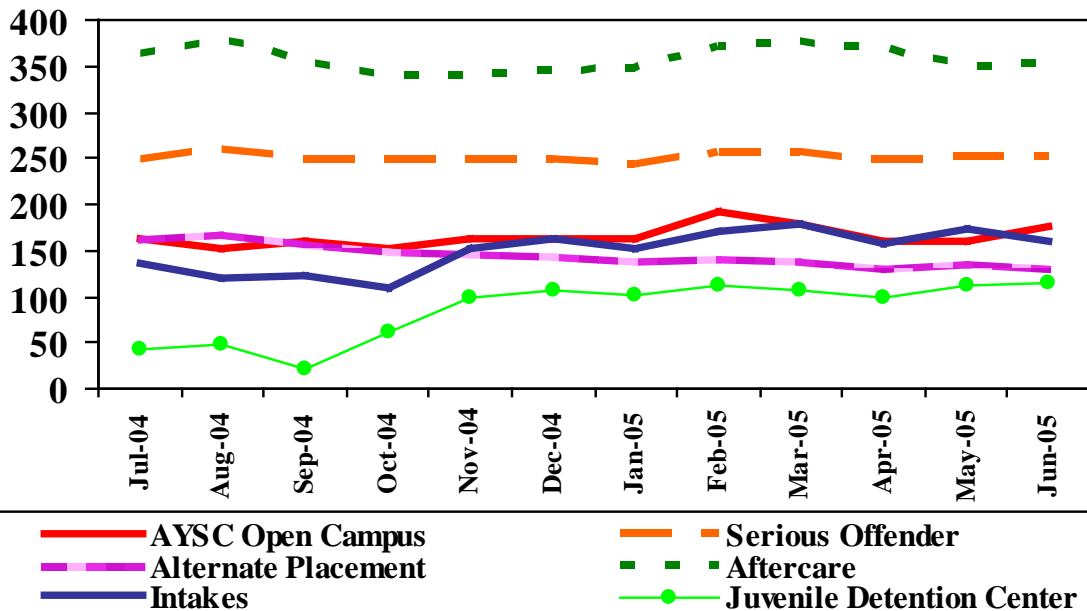
**Population Profiles
July 2004 - June 2005**

Total Population in DYS Custody



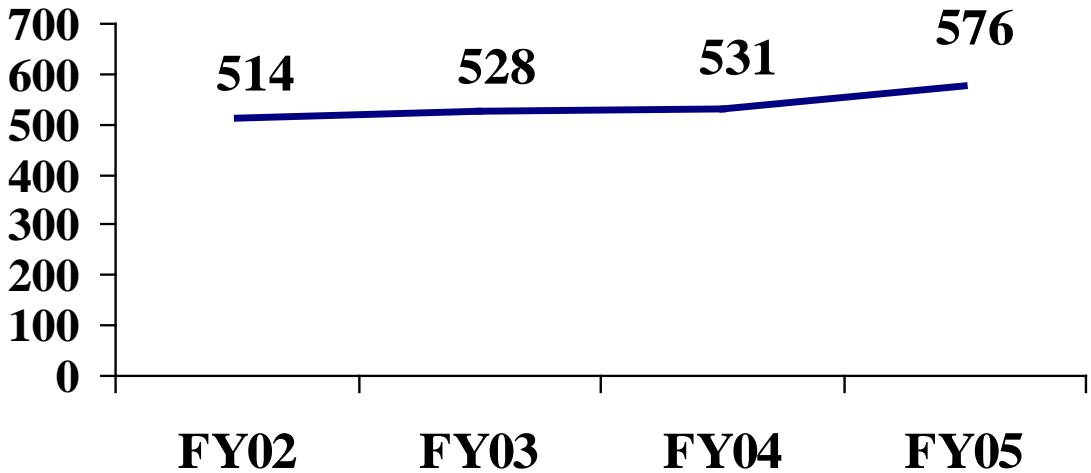
*Total Youth Population is based on the population count on the first day of the month.

Population by Program Type

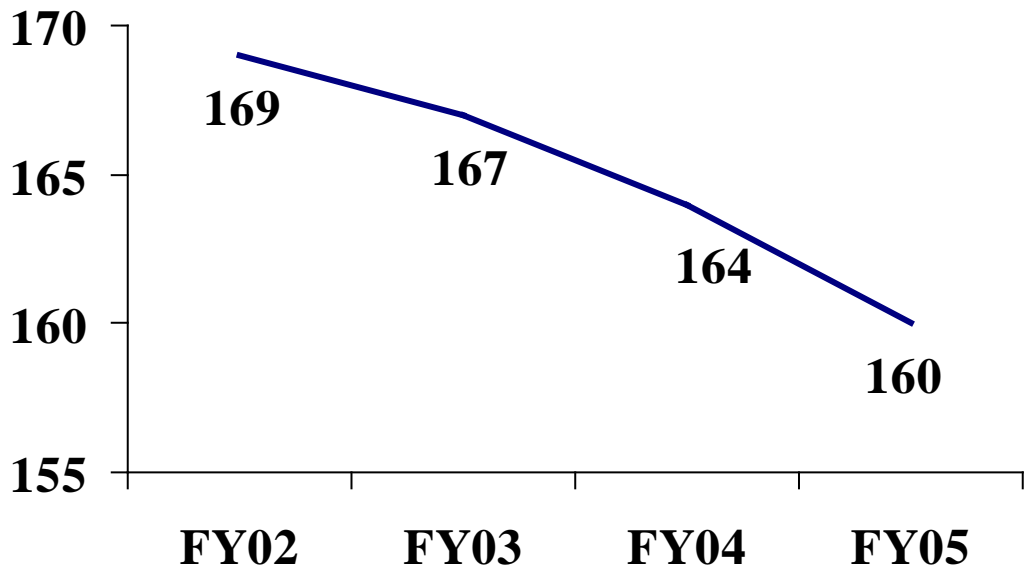


**Profiles of Juveniles Committed
July 2004 - June 2005**

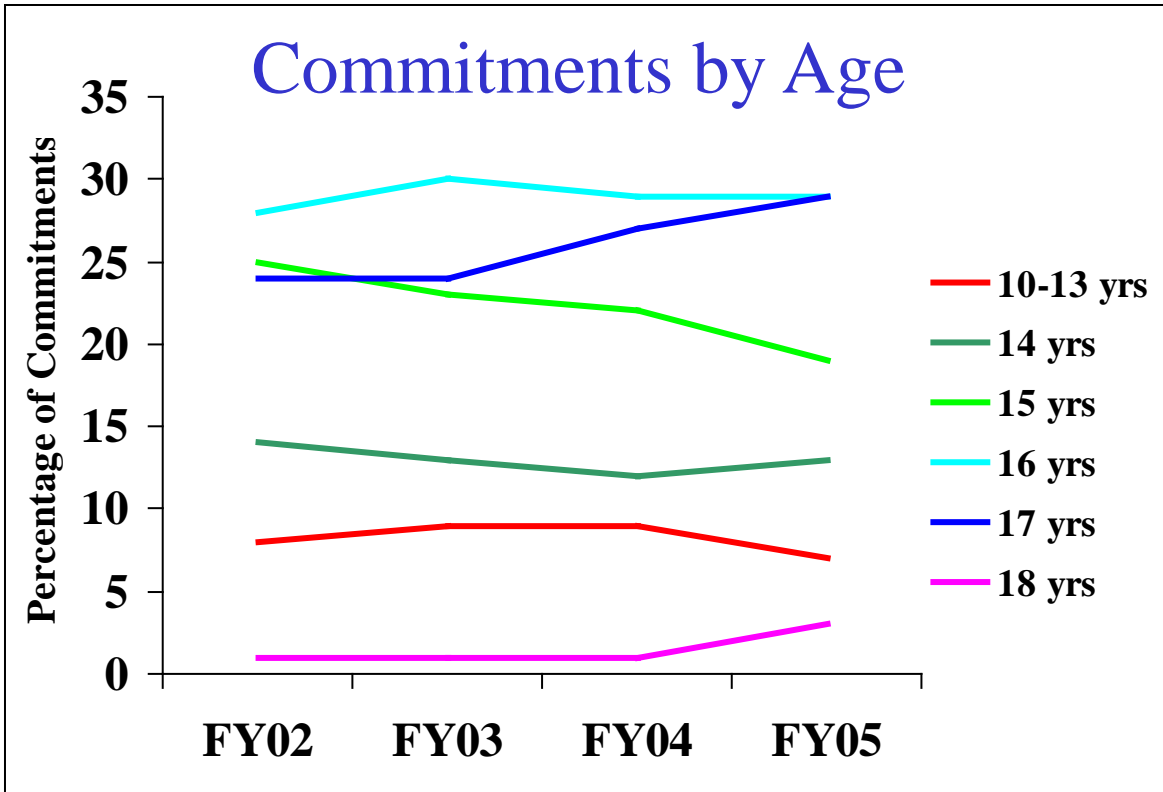
Total Commitments



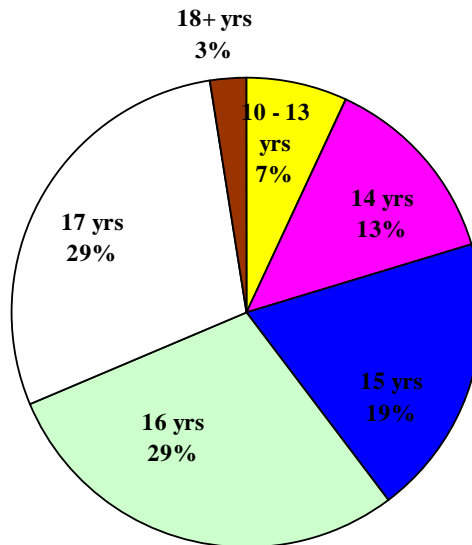
Average Bed Days



**Profiles of Juveniles Committed
July 2004 - June 2005**

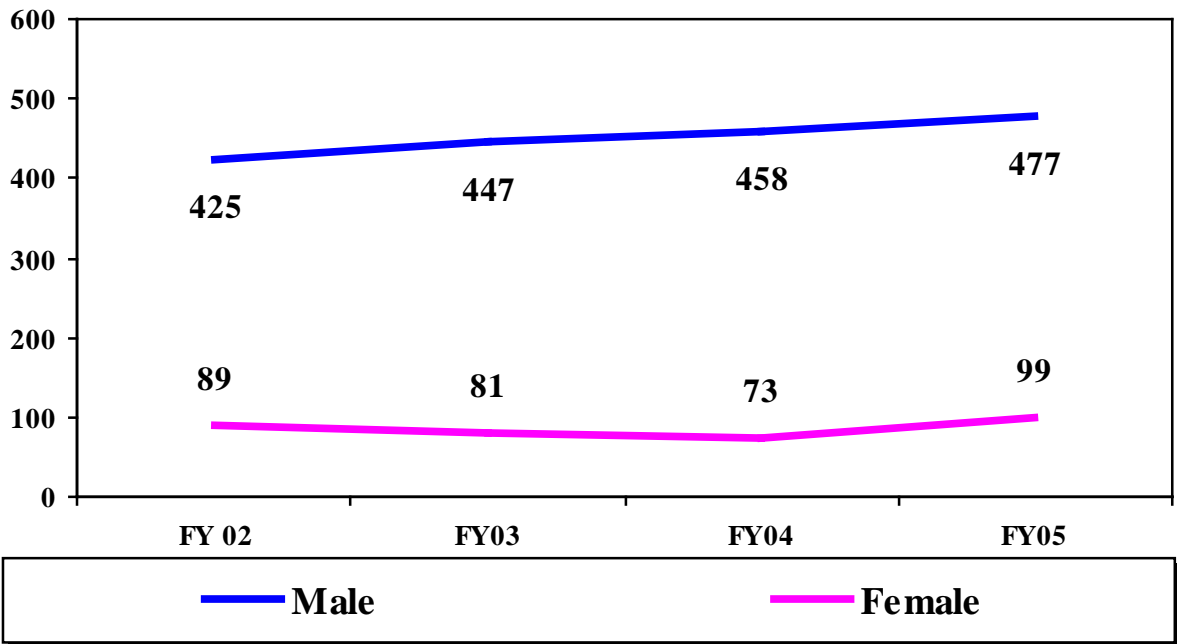


FY05 Commitments by Age

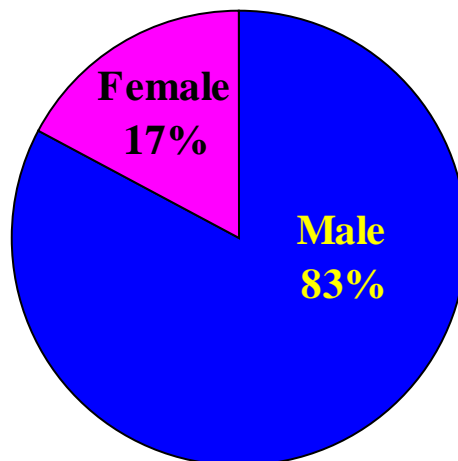


**Profiles of Juveniles Committed
July 2004 - June 2005**

Commitments by Gender

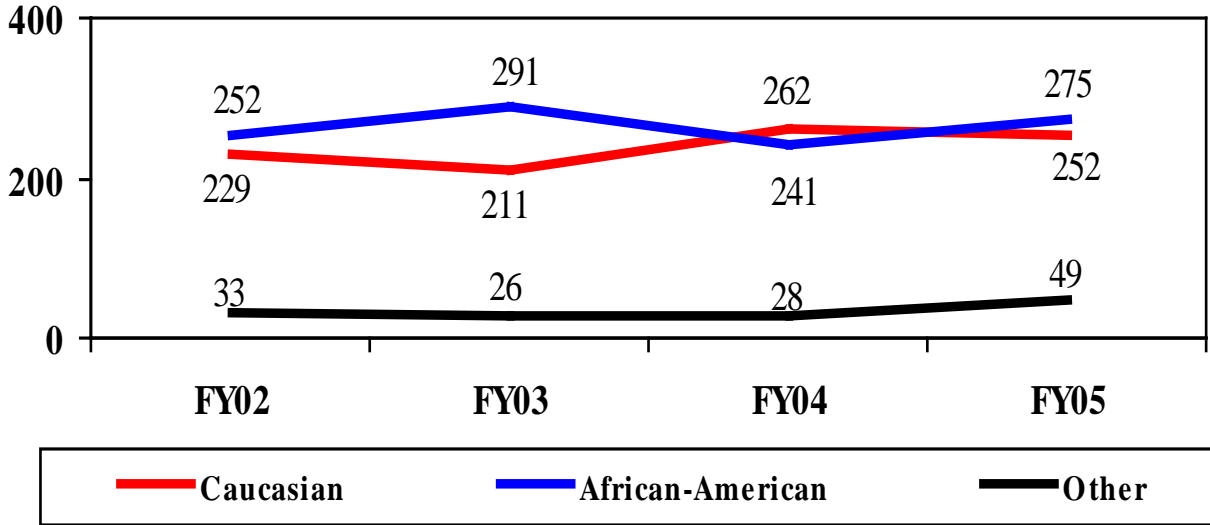


FY05 Commitments by Gender

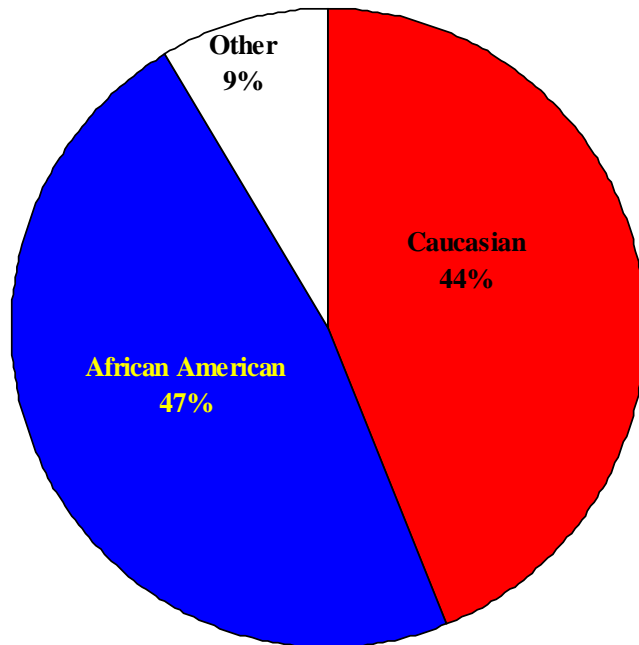


**Profiles of Juveniles Committed
July 2004 - June 2005**

Commitments by Race

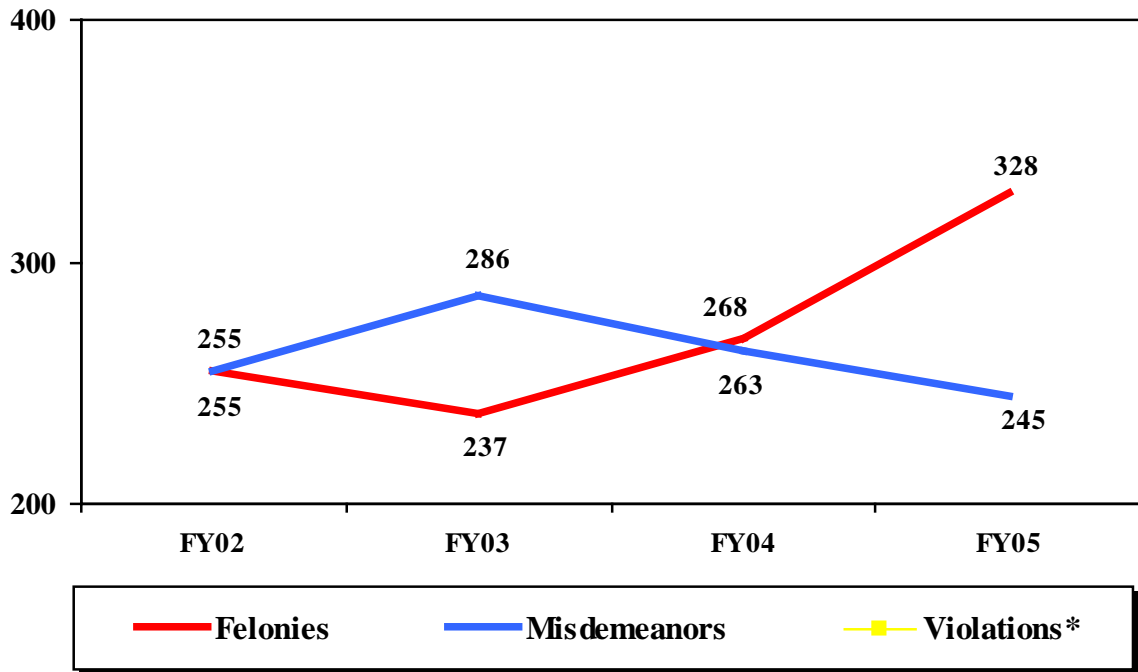


FY05 Commitments by Race



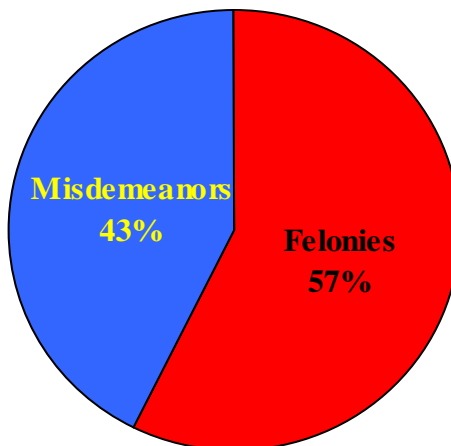
**Profiles of Juveniles Committed
July 2004 - June 2005**

Commitments by Offense Group



*There were 3 violations in FY05. That number is too small to plot on the chart.

FY05 Commitments by Offense Group



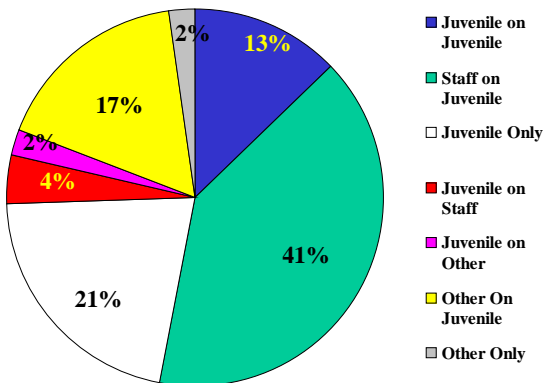
INCIDENTS

Incidents Accepted by the Child Abuse Hotline July 2004 - June 2005

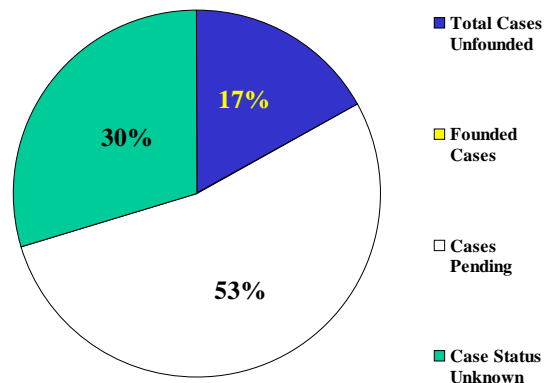
REFERRED TO HOTLINE						INCIDENTS ACCEPTED BY HOTLINE
111						47
Incident Type	Cases Accepted by ASP	Cases Pending	Cases Founded	Cases Unfounded	Case Status Unknown	
ASSAULT	0	0	0	0	0	
DISORDERLY CONDUCT	6	2	0	1	3	
FIGHT	1	0	0	1	0	
NEGLECT	3	1	0	1	1	
OTHER	17	8	0	3	6	
PHYSICAL ABUSE	11	7	0	2	2	
SEXUAL ABUSE	3	2	0	0	1	
SEXUAL MISCONDUCT	6	5	0	0	1	
TOTAL	47	25	0	8	14	

* Since the Hotline and the Investigations unit are two separate sections within the Arkansas State Police, the Hotline may accept an incident called in, then later the incident will not be investigated by the Investigations Unit after review of the circumstances. The DYS IAU never receives a follow-up on these reports to know whether they were ever investigated. Some of these incidents occurred prior to the juvenile being committed to DYS. The IAU does not receive notification of the findings in these incidents. Some incidents that are reported in one quarter may not be finalized by the State Police until sometime within the next quarter.

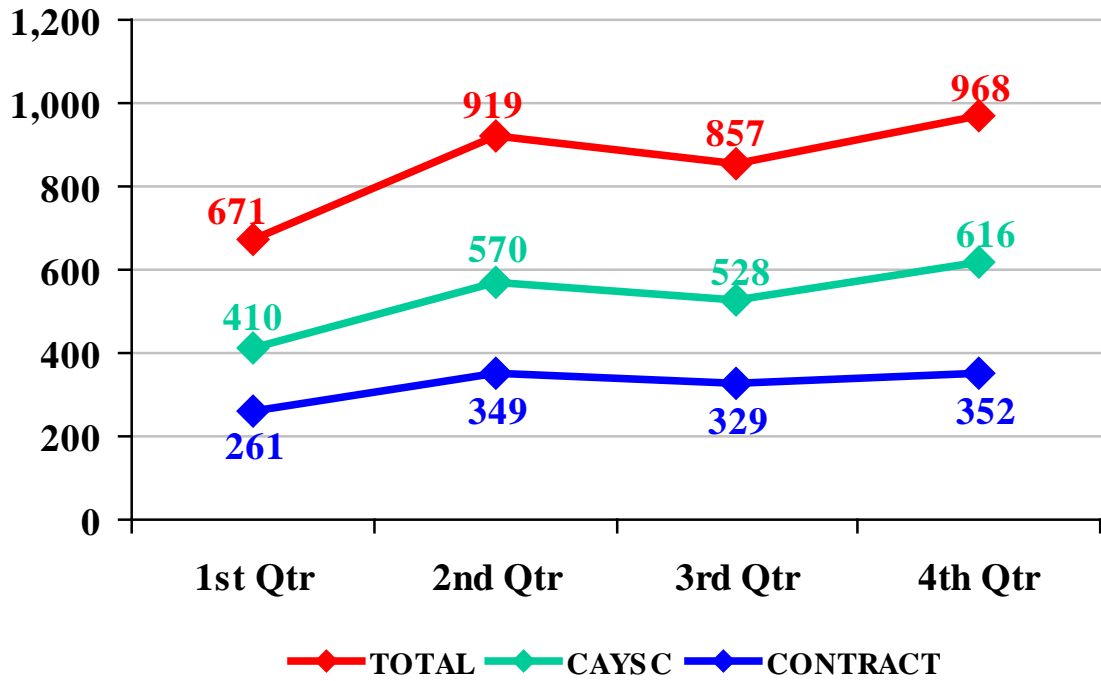
Categories of Cases Accepted



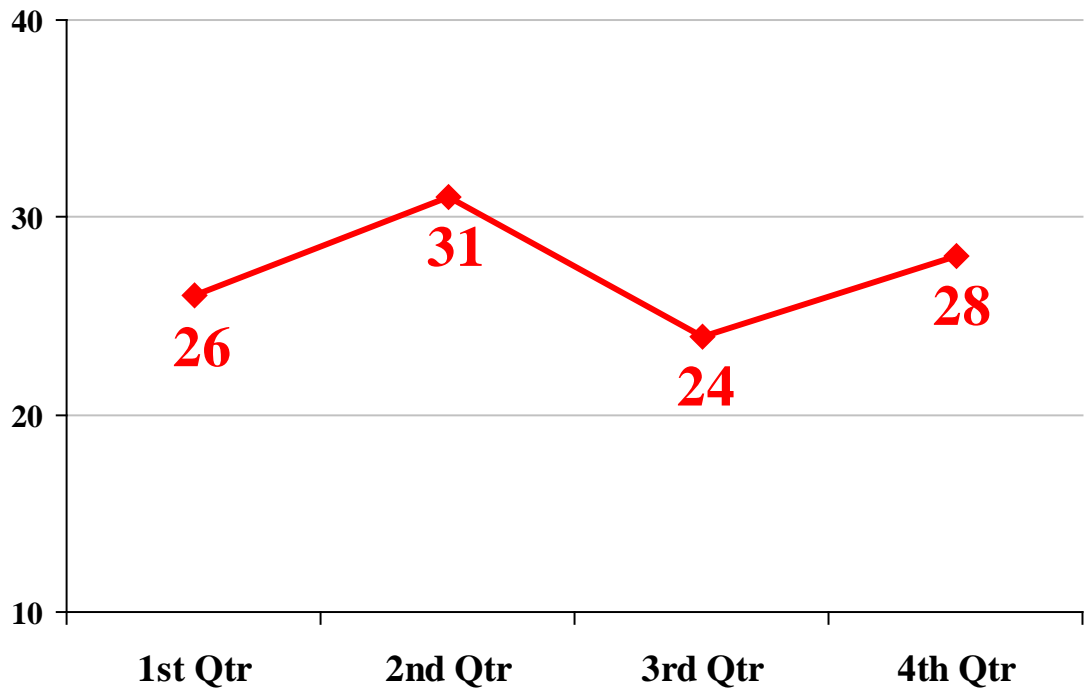
Status of Cases Accepted



Incident Reports for FY 2005

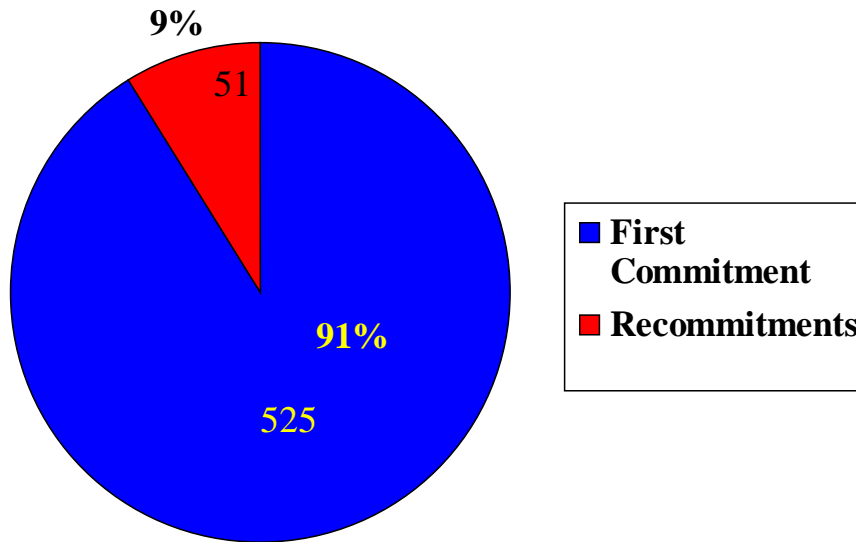


Incidents Reported to Hotline for FY 2005



COMMITMENTS

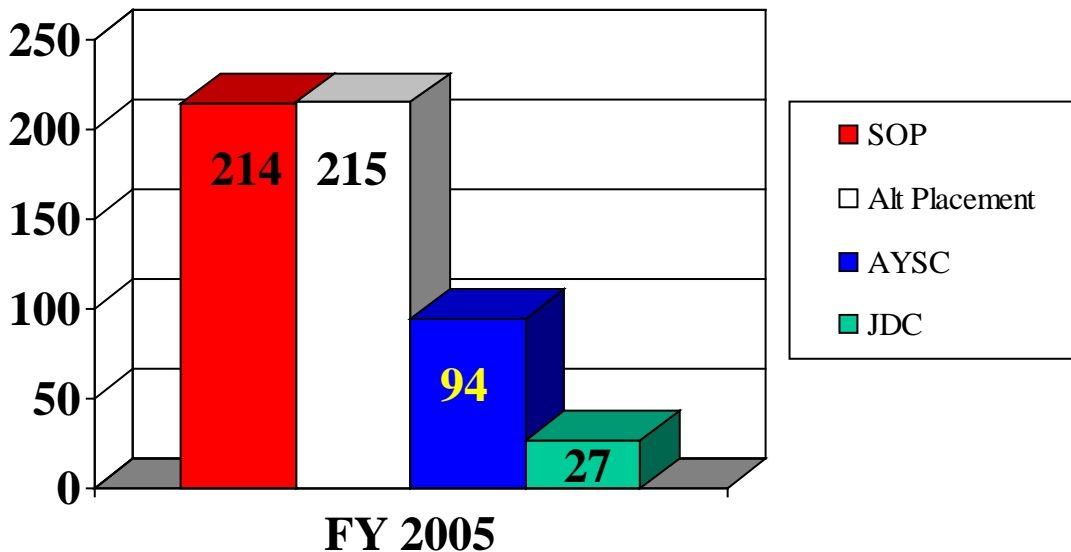
All Juveniles Committed During the Fiscal Year



Recommitments encompass all juveniles previously released from DYS custody and committed again during the fiscal year.

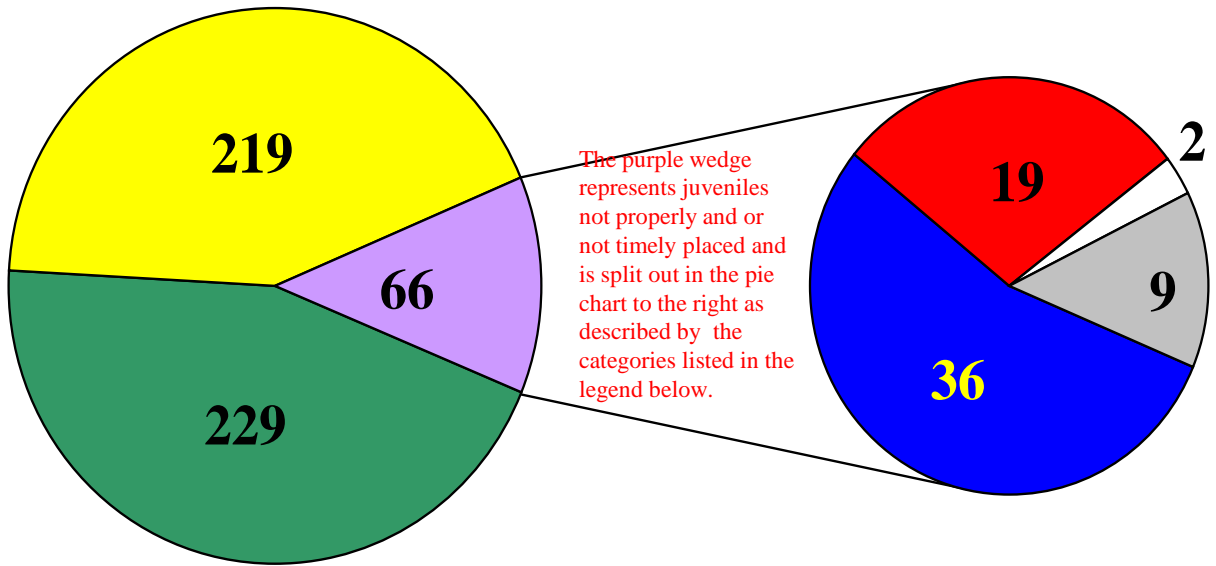
Average Length of Stay in Days for Juveniles Released

July 2004 - June 2005



RECOMMENDED PLACEMENTS

Juveniles Who Were Assessed During the Fiscal Year



■ Properly and Timely Placed

Juvenile was placed in accordance with either Primary Recommendation or Secondary recommendation within 14 days of Assessment.

■ Properly Placed After Holding Period

Juvenile was placed with either Primary or Secondary Recommendation 14-30 days following Assessment.

■ Not Timely Placed

Juvenile was not placed with either Primary or Secondary Recommendation within 30 days of Assessment.

■ Not Properly Placed

Juvenile was placed within 30 days of assessment but was not placed at either Primary or Secondary Recommendation.

□ Not Properly and Not Timely Placed

Juvenile was not placed within 30 days of assessment and was not placed at either Primary or Secondary Recommendation.

■ Pending Placement