

Department of Human Services

Division of Youth Services

Arkansas Child Welfare Report Card

In Compliance with Act 1222 of 1995

Report Period July 2002 – June 2003



Executive Summary

Total commitments to DYS increased by 2% from FY02 to FY03. There has been a 35% decline in commitments to DYS in the past 5 years. Arkansas continued to see a decline in the number of commitments for felony offenses. Felony commitments dropped from 255 in FY02 to 237 in FY03, a 7% decline.

The average daily youth population in DYS custody was 707 in FY03 compared to an average daily population of 700 for FY02. This was an increase of 1% during FY03. There were 1,008 juveniles in residential placements throughout the year for an average of 167 bed days per juvenile. The average bed days for FY02 were 169. Diversion services were provided to 2,739 juveniles during the fiscal year, compared with 3,786 served in FY03.

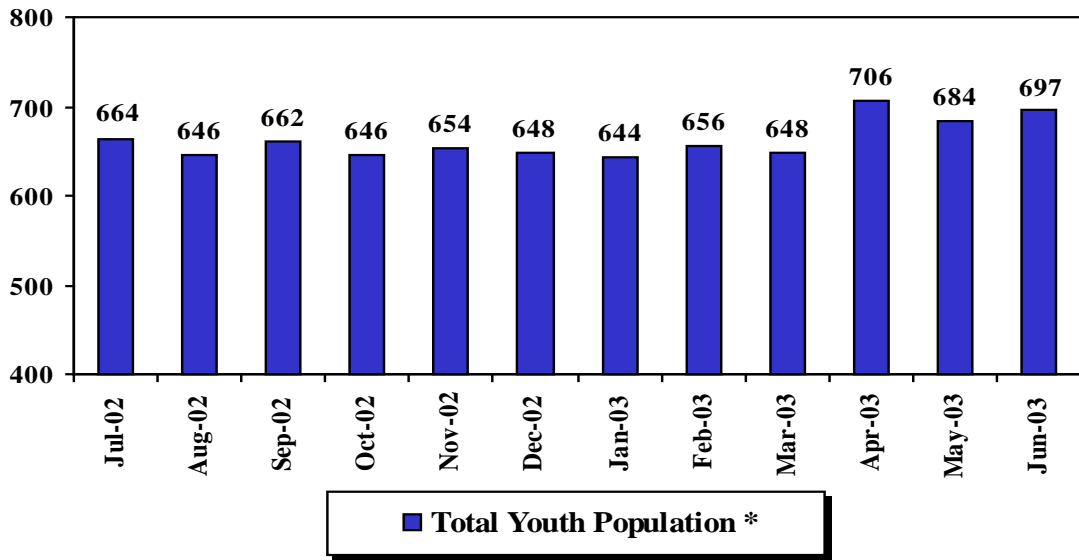
The age and sex of committed juveniles remained overwhelmingly males between 15 and 17 years of age. Of the committed youth, 77% were age 15 – 17. Males comprised 85% of all committed juveniles. In FY02 there were 253 African-American commitments and in FY03 there were 291. The result is a 15% increase in the number of African-American commitments from FY02 to FY03. Fifty-five percent (55%) of DYS commitments in FY03 were African-American.

In FY03, DYS referred 179 incidents to the Arkansas State Police (ASP) Hotline. Of these incidents, 49 were accepted for investigation. Only four cases were founded compared with three founded cases in FY02.

Of the 528 juveniles committed during Fiscal 2003, 89% were first-time commitments. In Fiscal 2002, 87% were first time commitments, reflecting a reduction of 2% in the number of recommitments.

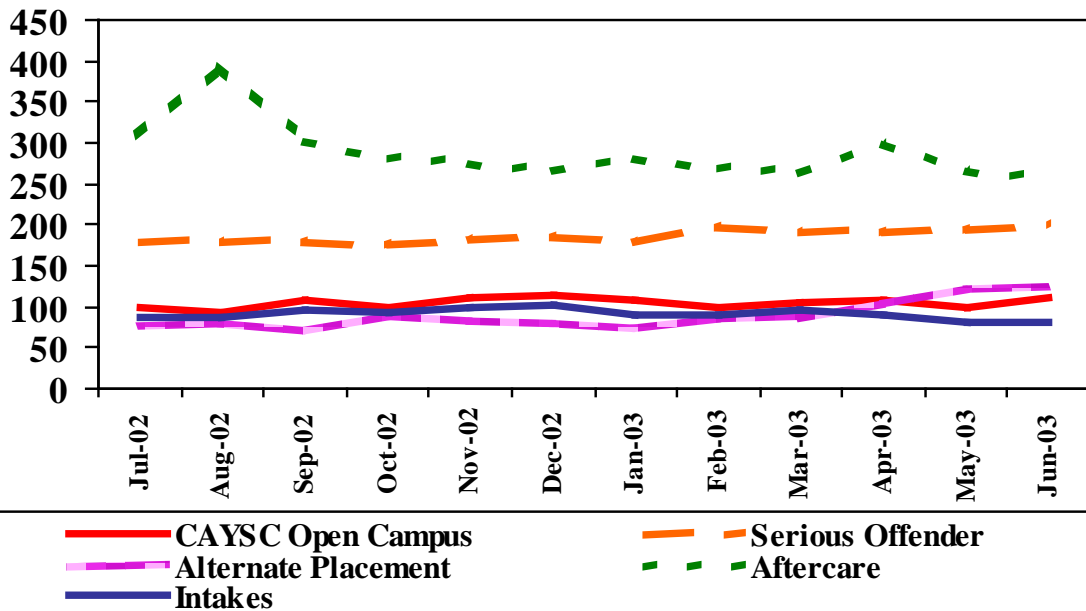
**Population Profiles
July 2002 - June 2003**

Total Population in DYS Custody

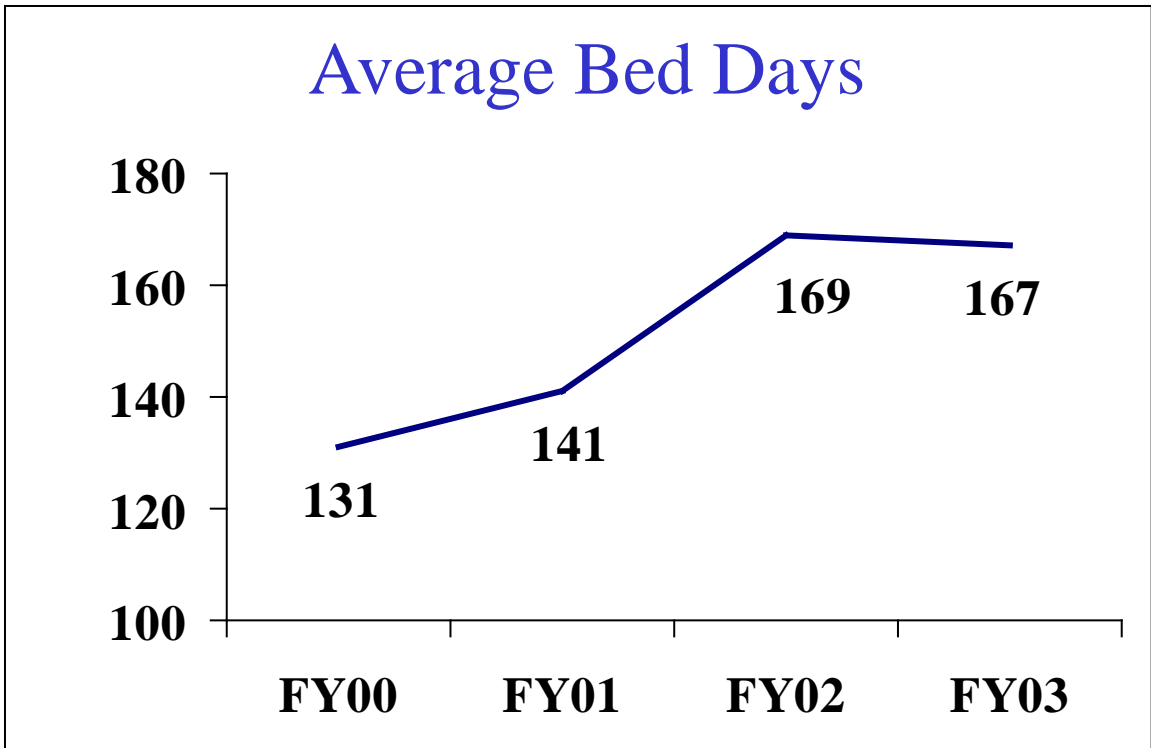
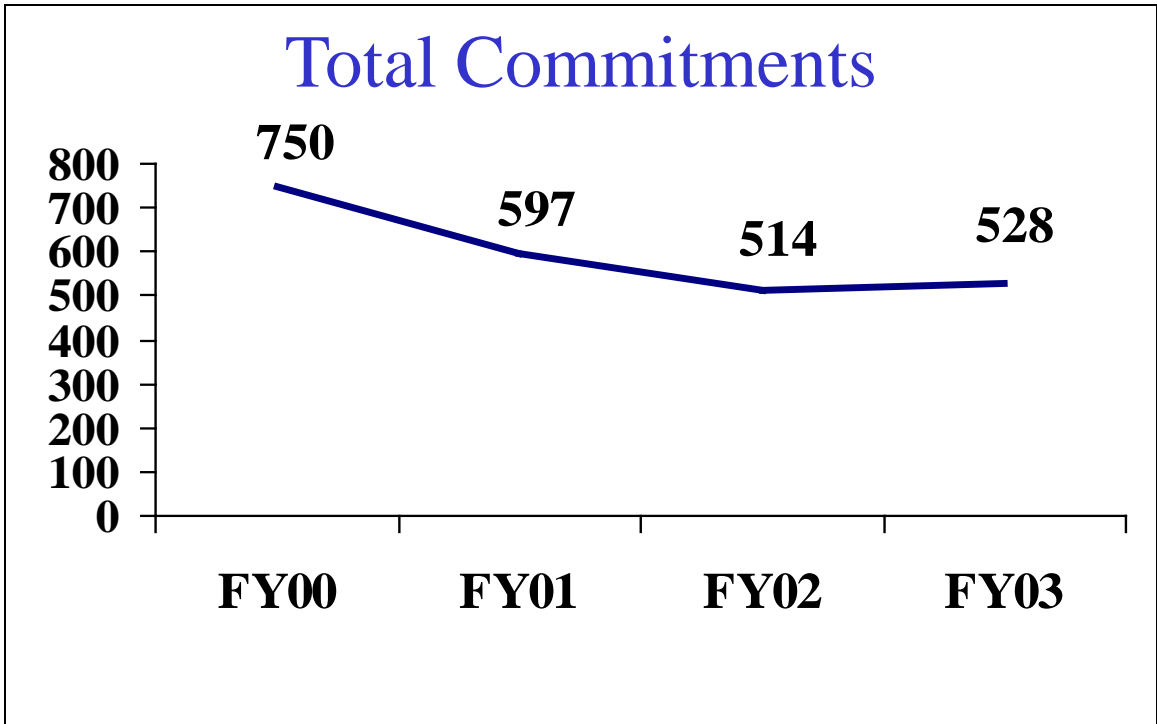


*Total Youth Population is based on the population count on the first day of the month.

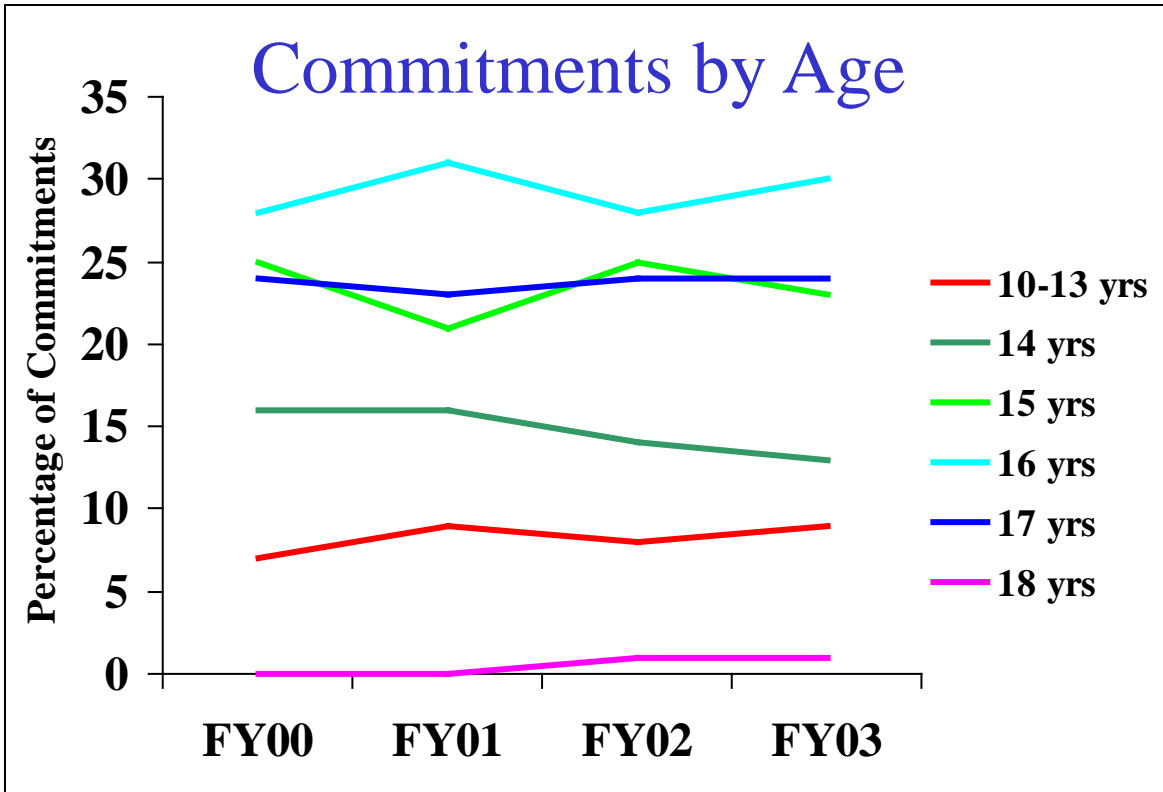
Population by Program Type



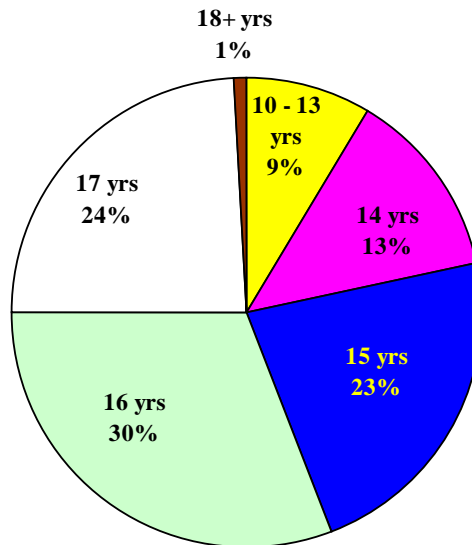
Profiles of Juveniles Committed
July 2002 - June 2003



**Profiles of Juveniles Committed
July 2002 - June 2003**

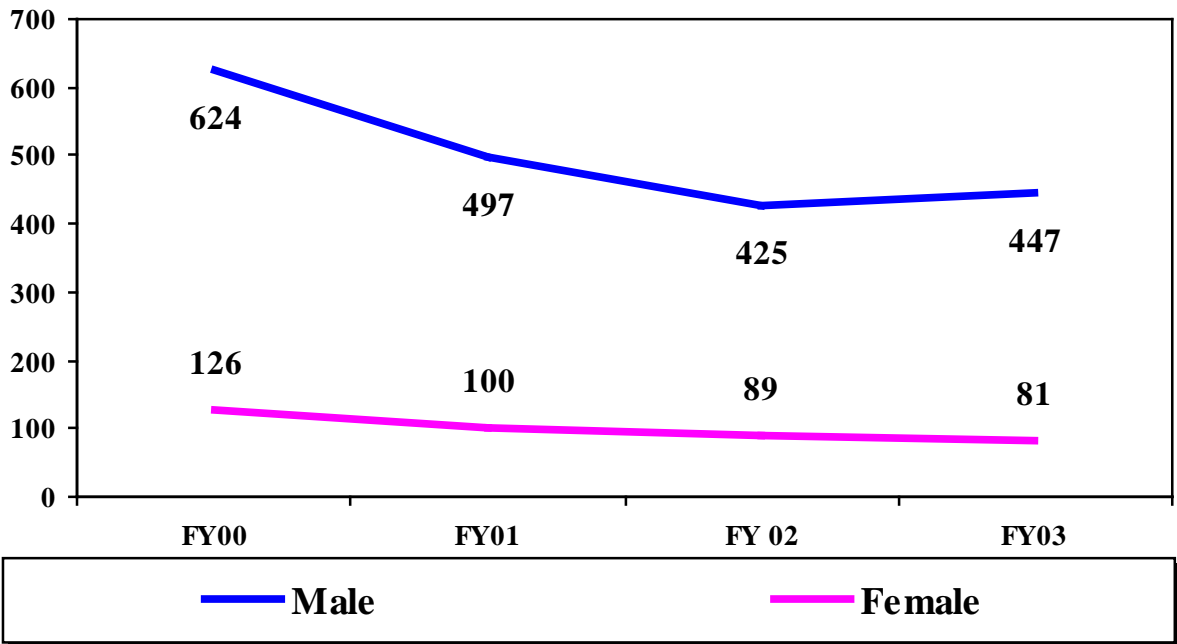


FY03 Commitments by Age

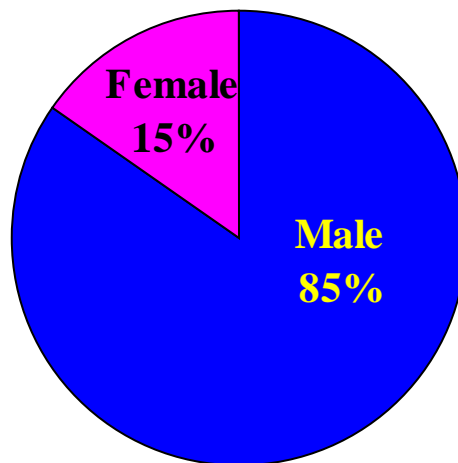


**Profiles of Juveniles Committed
July 2002 - June 2003**

Commitments by Gender

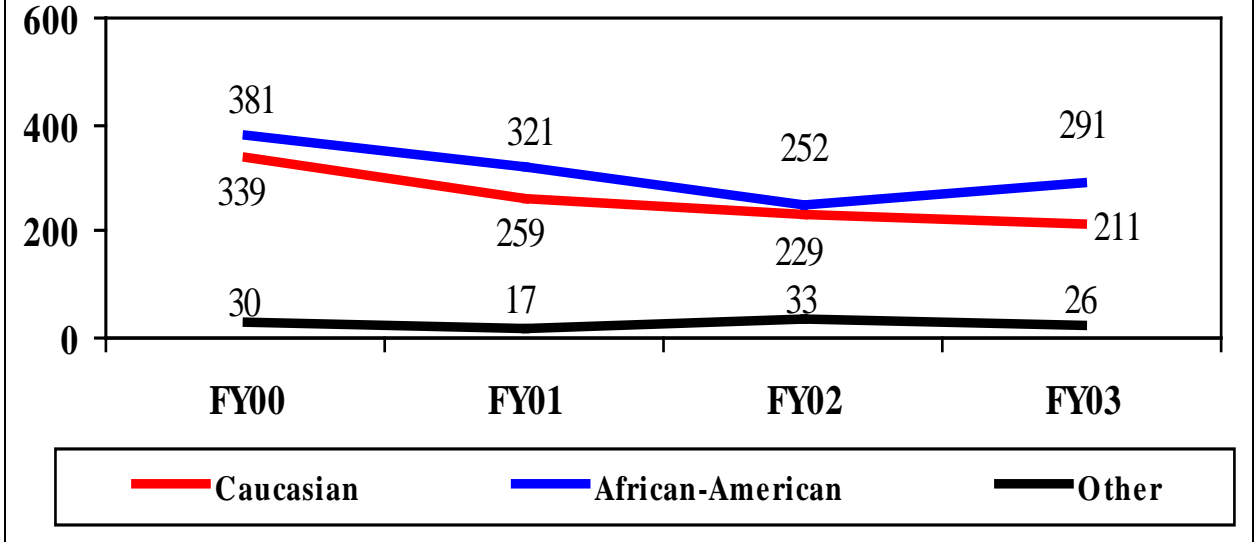


FY03 Commitments by Gender

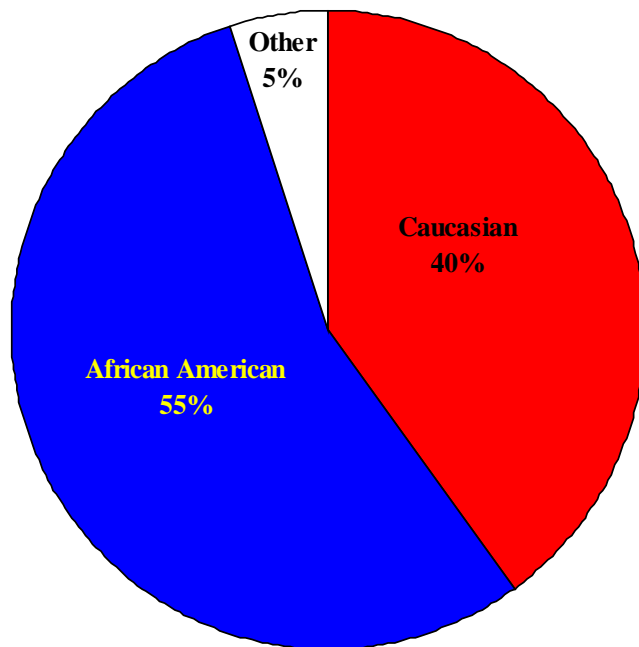


Profiles of Juveniles Committed
July 2002 - June 2003

Commitments by Race

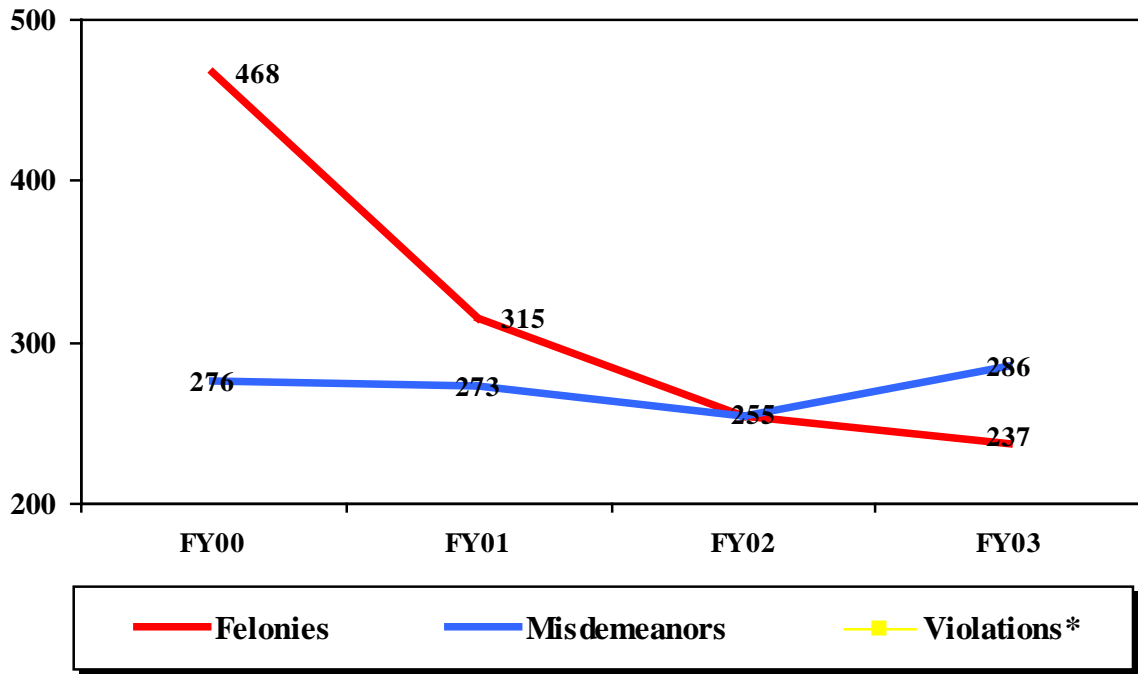


FY03 Commitments by Race



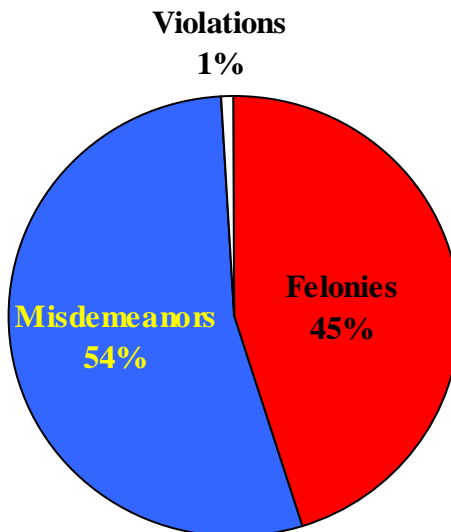
Profiles of Juveniles Committed
July 2002 - June 2003

Commitments by Offense Group



*There were 4 violations in FY03. That number is too small to plot on the chart.

FY03 Commitments by Offense Group



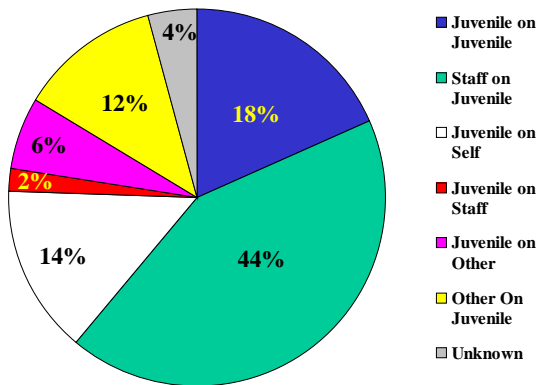
INCIDENTS

Incidents Accepted by the Child Abuse Hotline July 2002 - June 2003

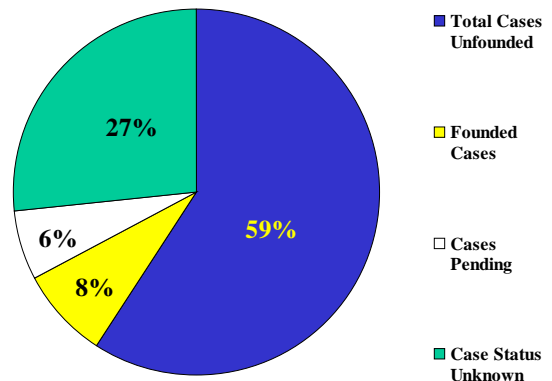
REFERRED TO HOTLINE		INCIDENTS ACCEPTED BY HOTLINE			
179		49			
Incident Type	Cases Accepted by ASP	Cases Pending	Cases Founded	Cases Unfounded	Case Status Unknown
ASSAULT	2	0	0	1	1
DISORDERLY CONDUCT	4	0	1	2	1
FIGHT	1	0	0	1	0
NEGLECT	2	0	2	0	0
OTHER	11	0	0	9	2
PHYSICAL ABUSE	19	1	0	13	5
SEXUAL ABUSE	7	0	1	2	4
SEXUAL MISCONDUCT	3	2	0	1	0
TOTAL	49	3	4	29	13*

* Since the Hotline and the Investigations unit are two separate sections within the Arkansas State Police, the Hotline may accept an incident called in, then later the incident will not be investigated by the Investigations Unit after review of the circumstances. The DYS IAU never receives a follow-up on these reports to know whether they were ever investigated. Some of these incidents occurred prior to the juvenile being committed to DYS. The IAU does not receive notification of the findings in these incidents. Some incidents that are reported in one quarter may not be finalized by the State Police until sometime within the next quarter.

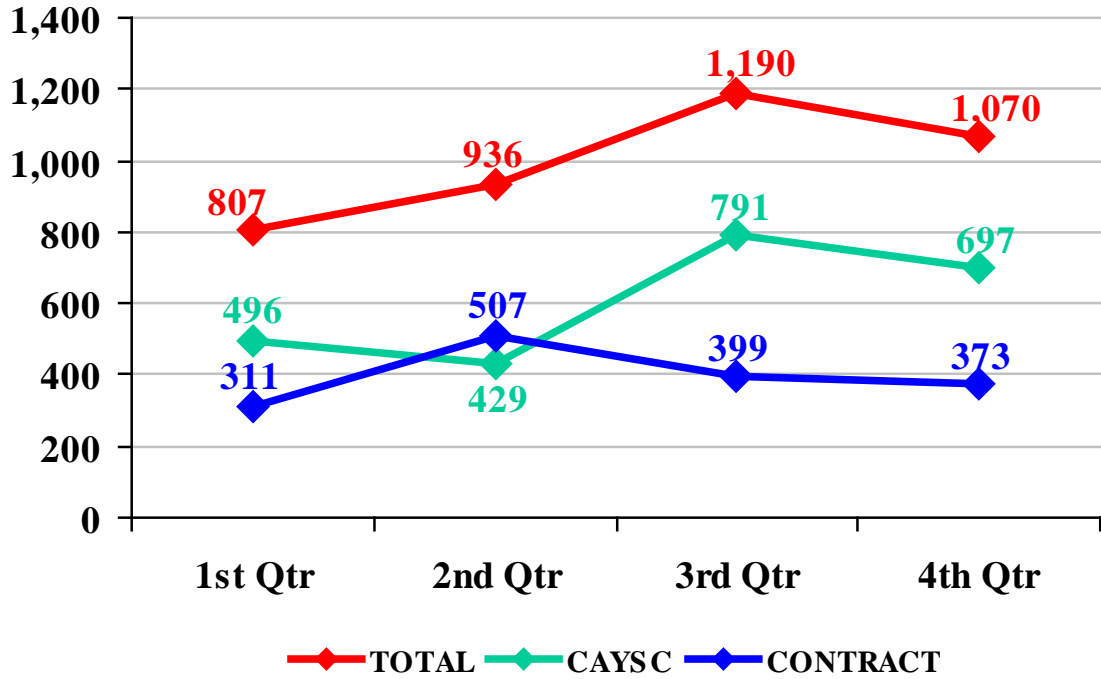
Categories of Cases Accepted



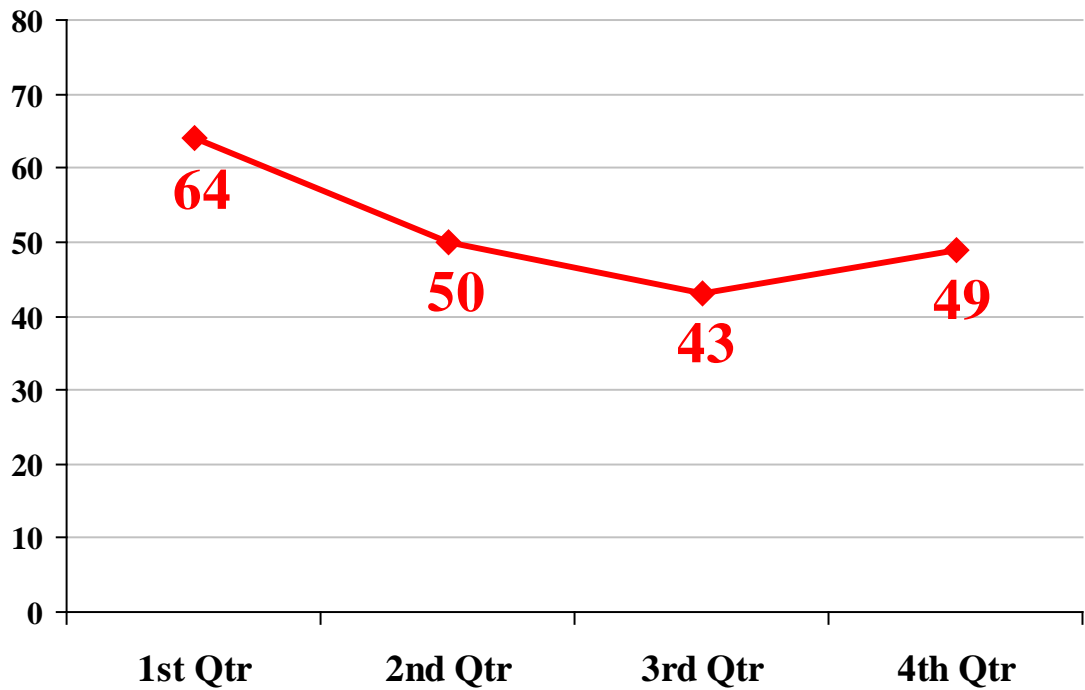
Status of Cases Accepted



Incident Reports for FY 2003

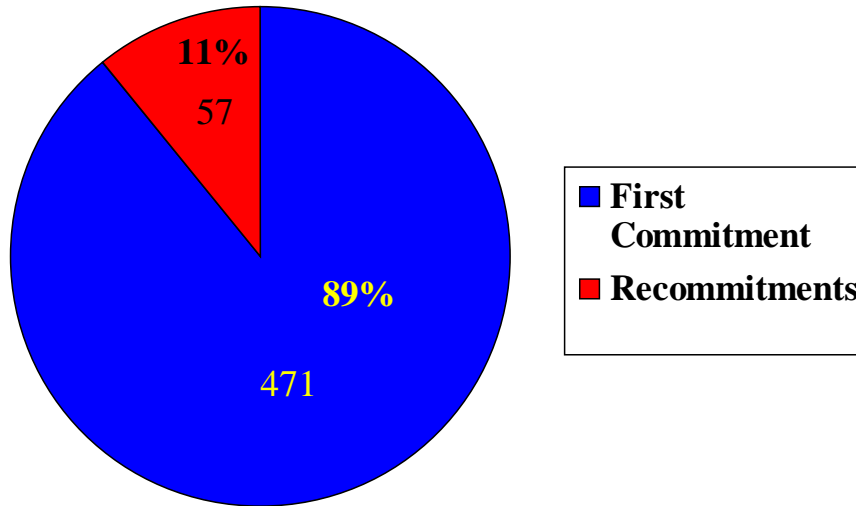


Incidents Reported to Hotline for FY 2003



COMMITMENTS

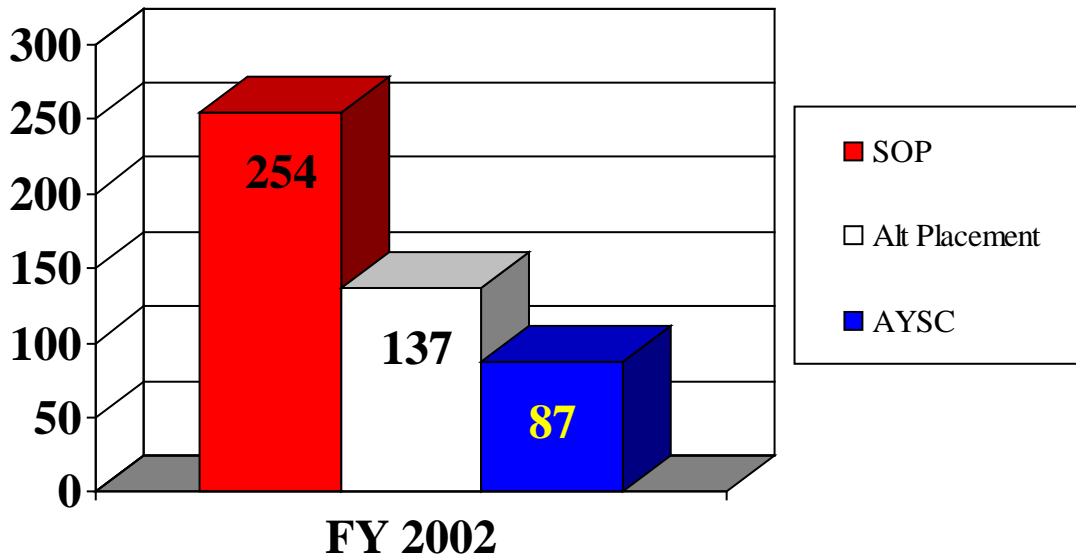
All Juveniles Committed During the Fiscal Year



Recommitments encompass all juveniles previously released from DYS custody and committed again during the fiscal year.

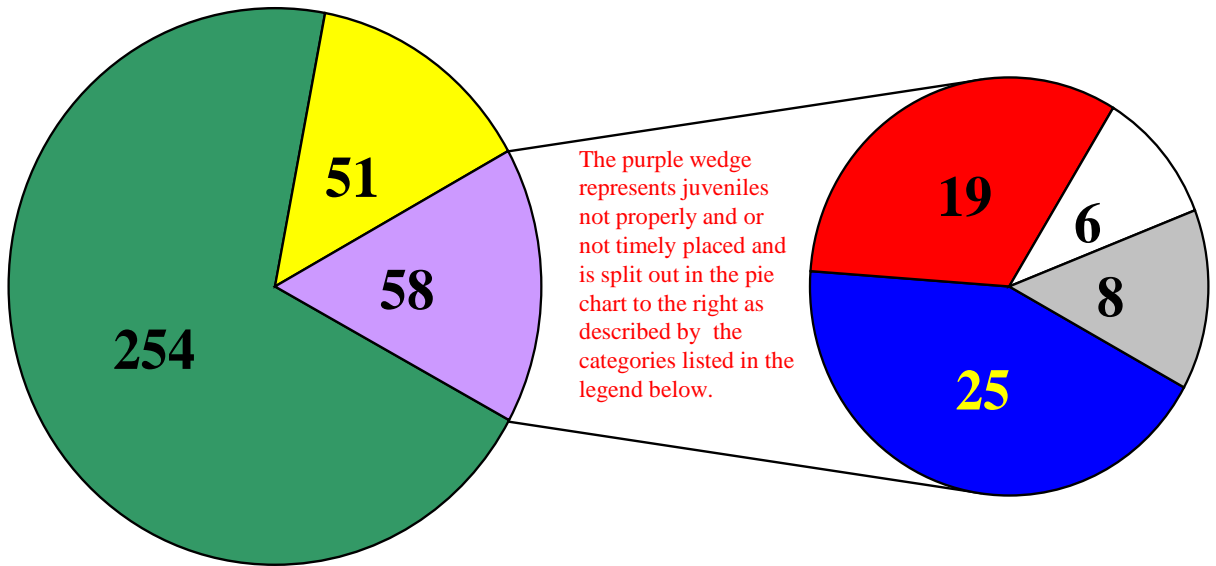
Average Length of Stay in Days for Juveniles Released

July 2002 - June 2003



RECOMMENDED PLACEMENTS

Juveniles Who Were Assessed During the Fiscal Year



The purple wedge represents juveniles not properly and or not timely placed and is split out in the pie chart to the right as described by the categories listed in the legend below.

■ Properly and Timely Placed

Juvenile was placed in accordance with either Primary Recommendation or Secondary recommendation within 14 days of Assessment.

■ Properly Placed After Holding Period

Juvenile was placed with either Primary or Secondary Recommendation 14-30 days following Assessment.

■ Not Timely Placed

Juvenile was not placed with either Primary or Secondary Recommendation within 30 days of Assessment.

■ Not Properly Placed

Juvenile was placed within 30 days of assessment but was not placed at either Primary or Secondary Recommendation.

□ Not Properly and Not Timely Placed

Juvenile was not placed within 30 days of assessment and was not placed at either Primary or Secondary Recommendation.

■ Not Placed