

Department of Human Services

Division of Youth Services

Arkansas Child Welfare Report Card

In Compliance with Act 1222 of 1995

Report Period July 2001 – June 2002



Executive Summary

Total commitments to DYS declined by 14% from FY01 to FY02, although the commitment rate appears to have stabilized for FY02. There has been a 37% decline in commitments to DYS in the past 5 years. Arkansas continued to see a decline in the number of felonies committed by juveniles as well as in the seriousness of crimes. Felony commitments dropped from 315 in FY01 to 255 in FY02, a 19% decline.

The total youth population in DYS custody dropped from a high of 809 to a low of 658 for a decline of 18% during Fiscal 2002. The most significant change in population was the number of juveniles in aftercare. Part of this decline was attributed to efforts to strengthen and improve the accuracy of the Division's Juvenile Tracking System. There were 1,242 juveniles in residential placements throughout the year for an average of 169 bed days per juvenile. Diversion services were provided to 3,786 juveniles during the fiscal year.

The age and sex of committed juveniles remained overwhelmingly males between 15 and 17 years of age. Of the committed youth, 77% were age 15 – 17. Males comprised 83% of all committed juveniles. In FY01 there were 321 African-American commitments and in FY02 there were 253. The result is a 21% reduction in the number of African-American commitments from FY01 to FY02. Arkansas also continued to experience an increased proportion of Caucasians committed. Despite this trend, forty-nine percent (49%) of DYS commitments continued to be African-American in FY 02.

In FY 02, DYS referred 156 incidents to the Arkansas State Police (ASP) Hotline. Of these incidents, 64 were accepted for investigation. Three cases were founded, 14 cases were unfounded, and the case status of 27 cases was unknown.

Of the 514 juveniles committed during Fiscal 2002, 87% were first-time commitments. In Fiscal 2001, 84% were first time commitments, reflecting a slight reduction in the number of recommitments.

Executive Summary

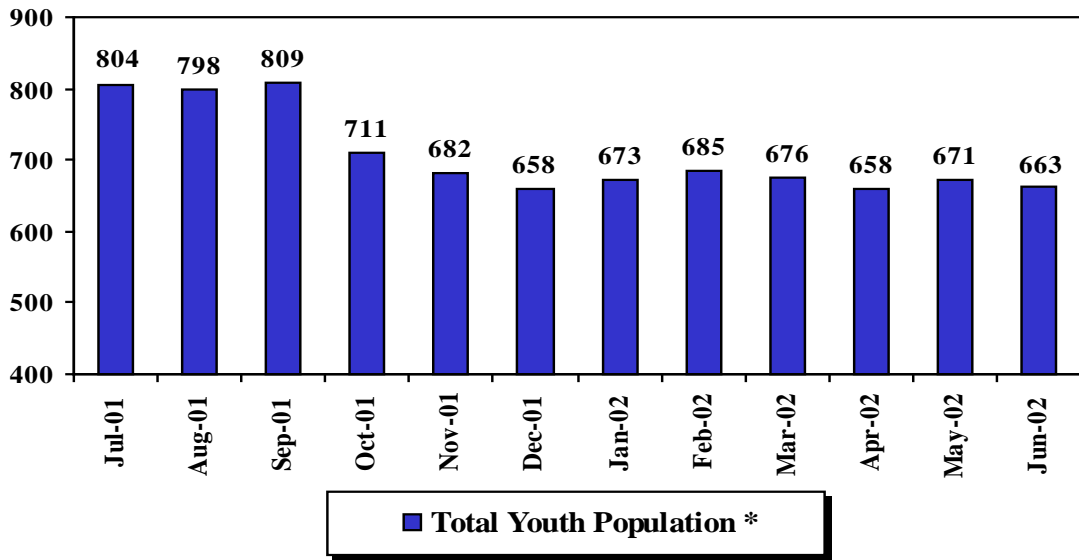
continued

The number of placements not completed properly or timely increased when compared to the previous year (from 36% to 42%). The Division has taken steps to remedy this situation by:

- Adding Substance Abuse education and Substance Abuse Counseling (individual and group) by certified substance abuse counselors to Therapeutic Group Home, Residential Psychiatric Treatment, Sex Offender Treatment and Community Based Provider contracts for fiscal year 2003.
- By working with the Bureau of Alcohol and Drug Abuse Prevention to expand Adolescent Residential Substance Abuse Treatment capacity for state fiscal year 2003.
- Expanding geographic and service capacity for residential psychiatric treatment for state fiscal year 2003.
- Expanding step-down and outpatient sex offender treatment services for state fiscal year 2003.
- Instituting the use of a multi-disciplinary staffing process to determine placement recommendations.

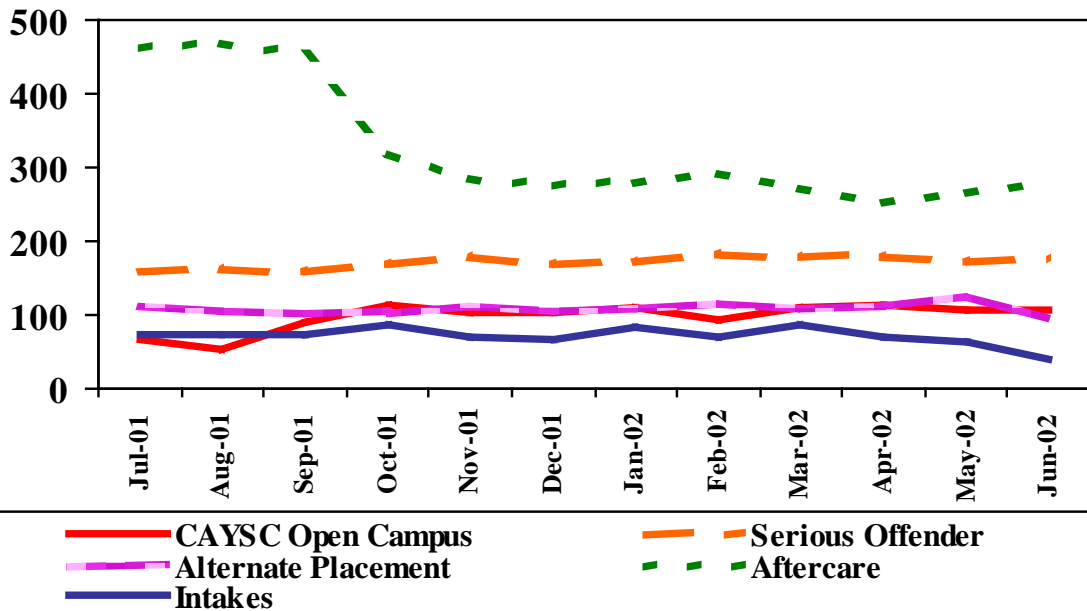
**Population Profiles
July 2001 - June 2002**

Total Population in DYS Custody

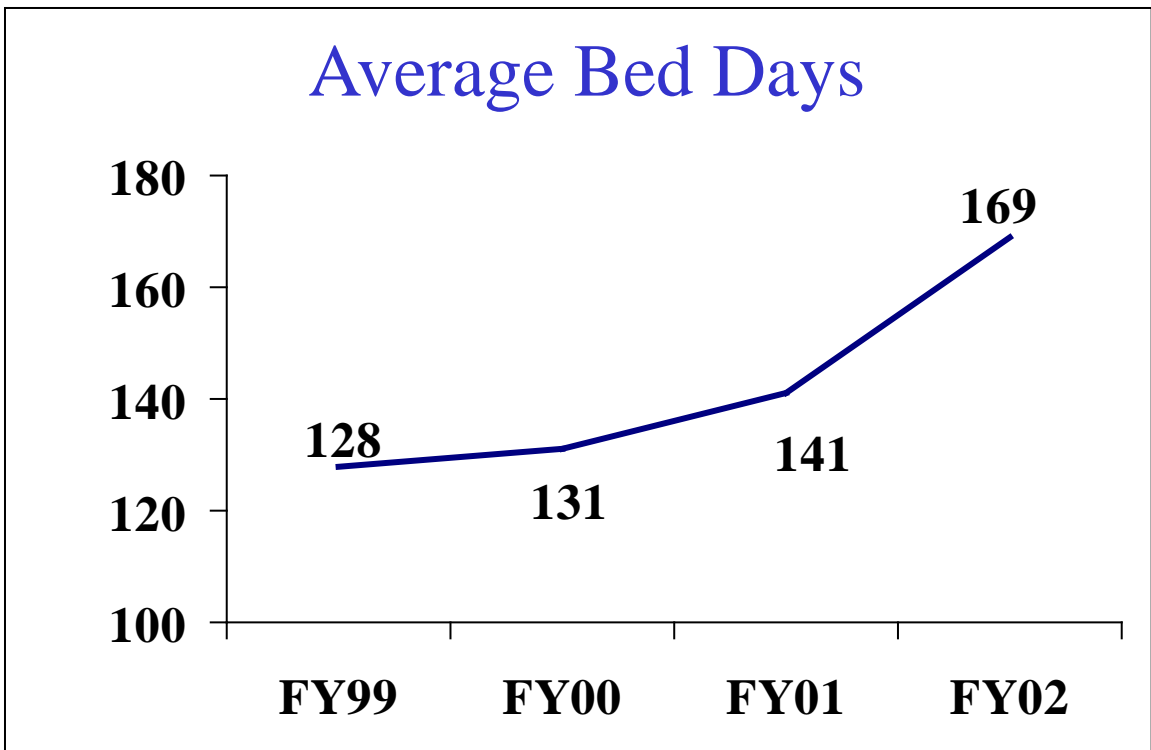
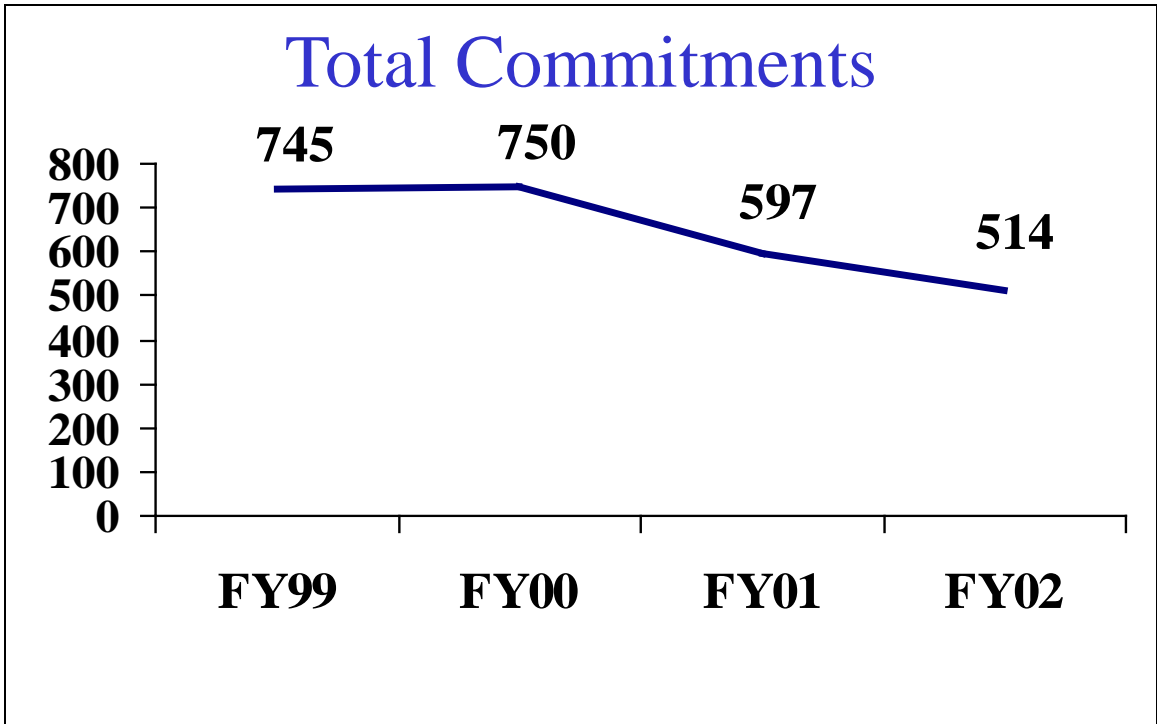


*Total Youth Population is based on the population count on the first day of the month.

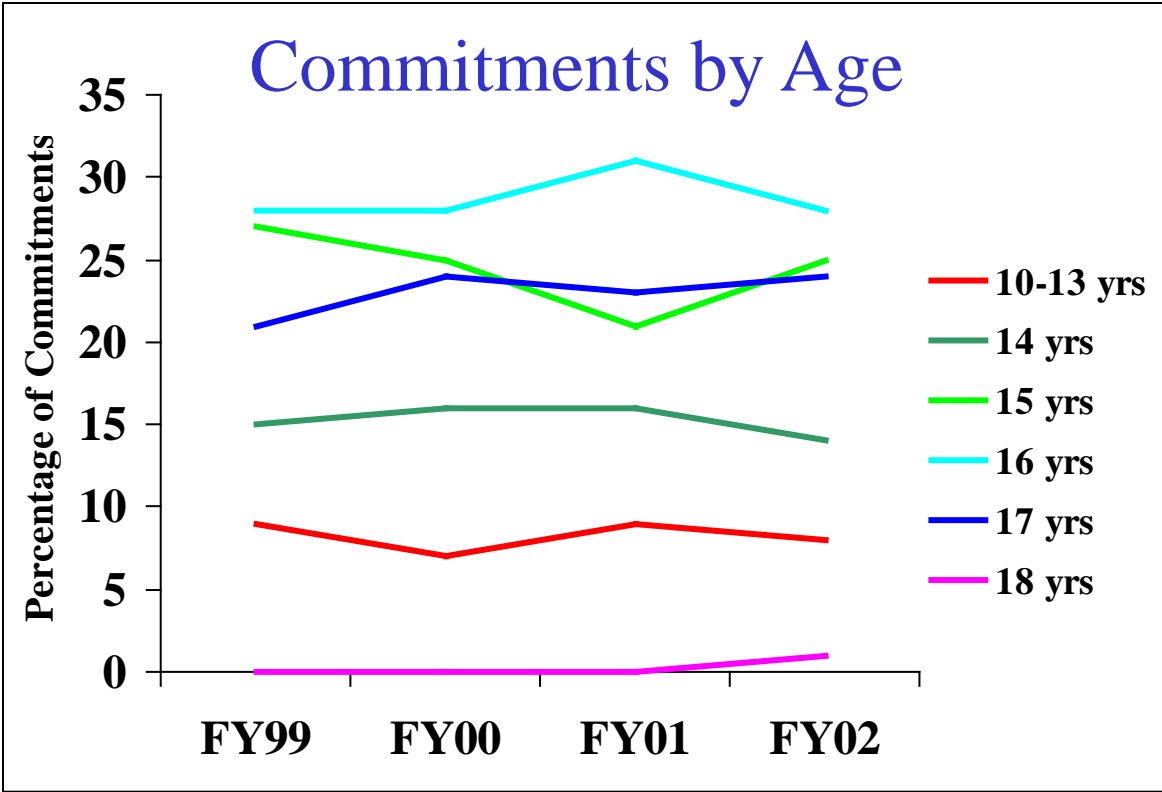
Population by Program Type



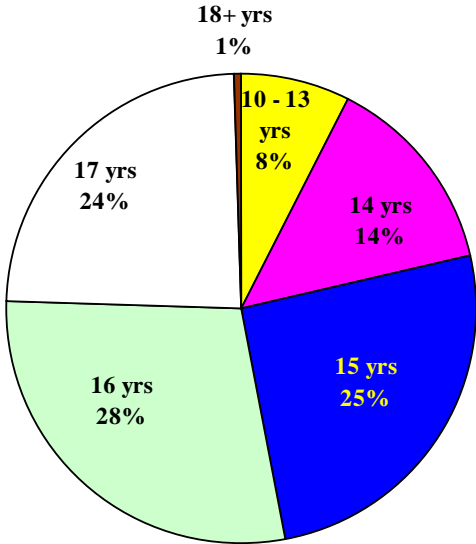
**Profiles of Juveniles Committed
July 2001 - June 2002**



**Profiles of Juveniles Committed
July 2001 - June 2002**

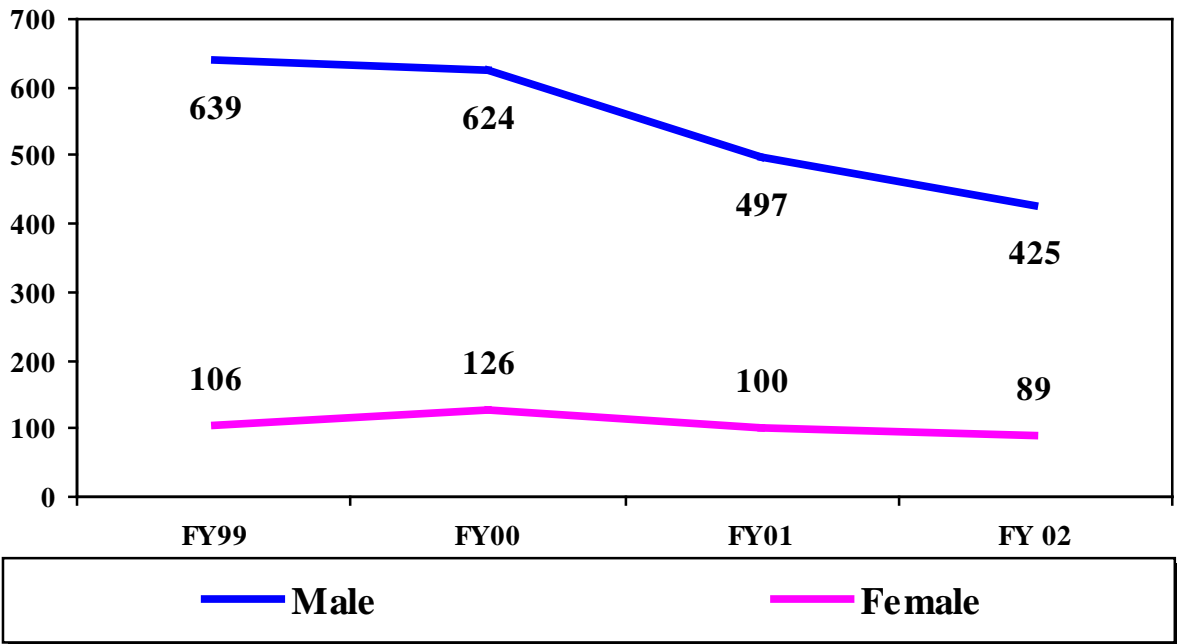


FY02 Commitments by Age

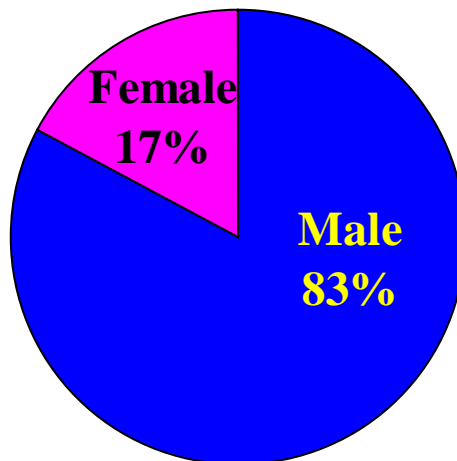


**Profiles of Juveniles Committed
July 2001 - June 2002**

Commitments by Gender

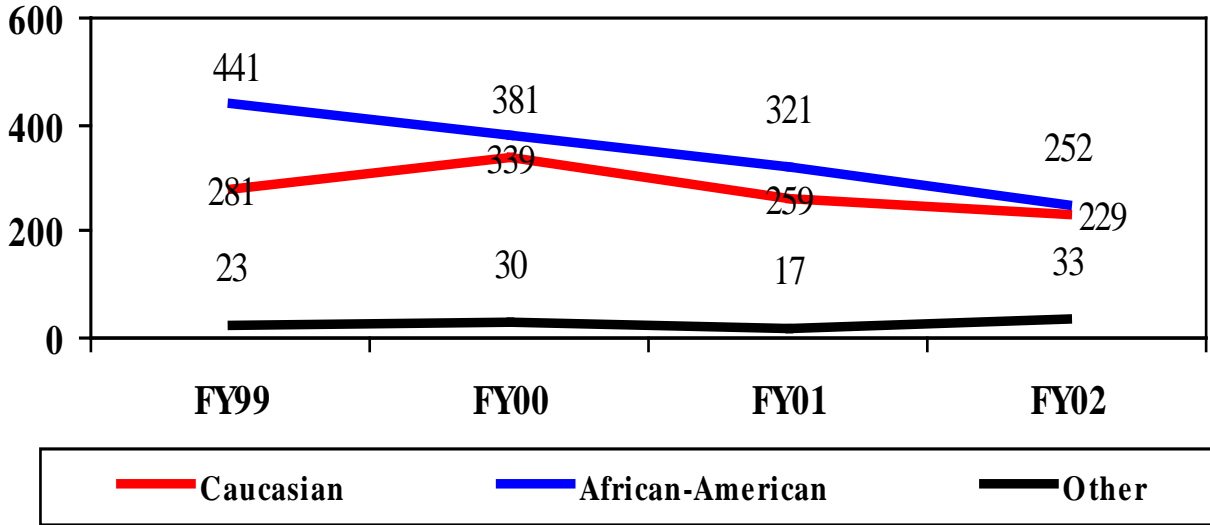


FY02 Commitments by Gender

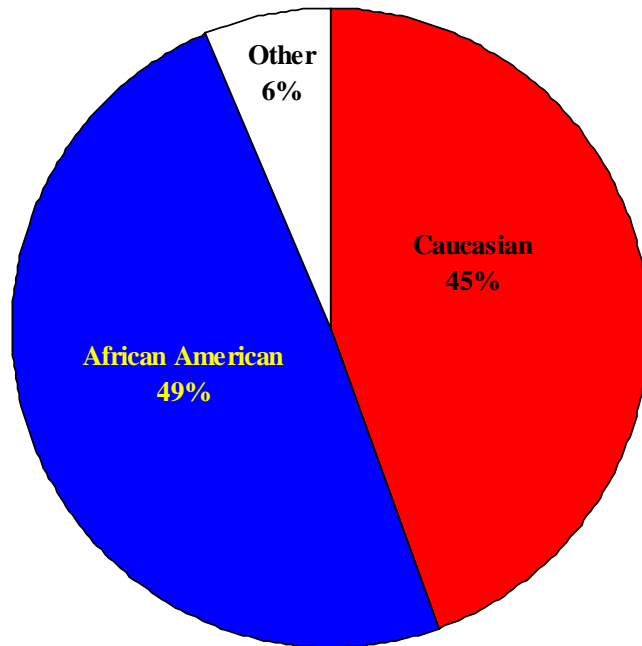


**Profiles of Juveniles Committed
July 2001 - June 2002**

Commitments by Race

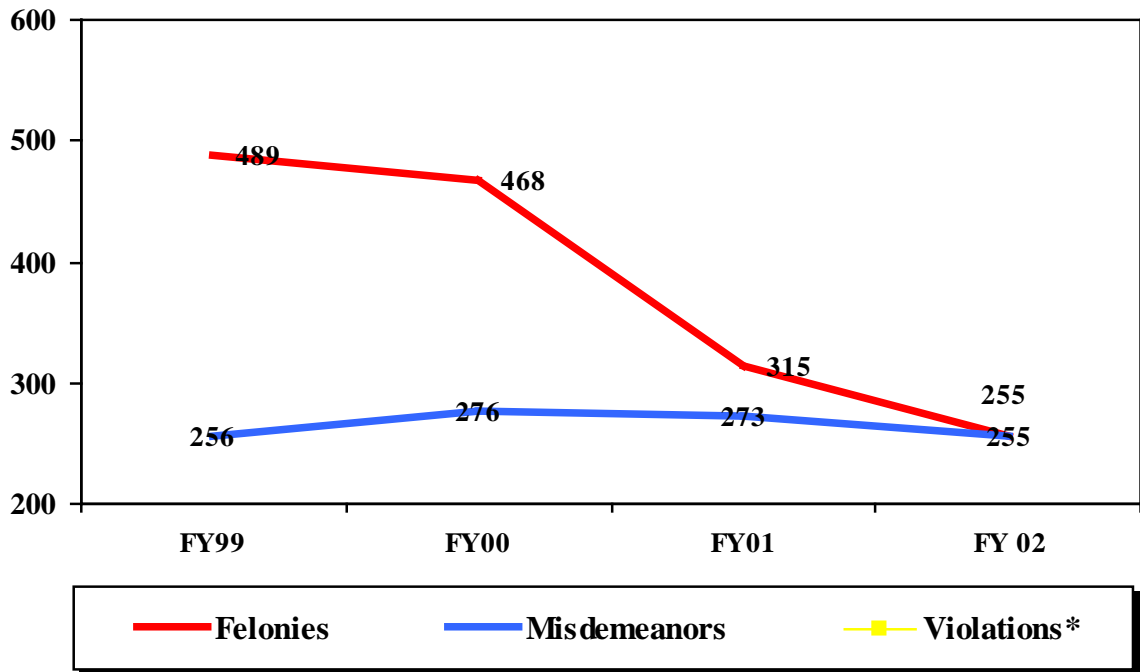


FY02 Commitments by Race



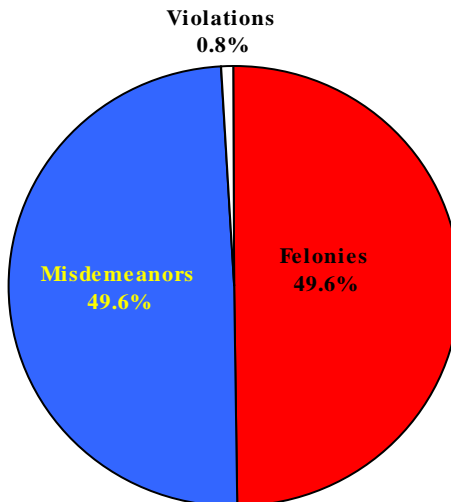
**Profiles of Juveniles Committed
July 2001 - June 2002**

Commitments by Offense Group



*There were 4 violations in FY02. That number is too small to plot on the chart.

FY02 Commitments by Offense Group



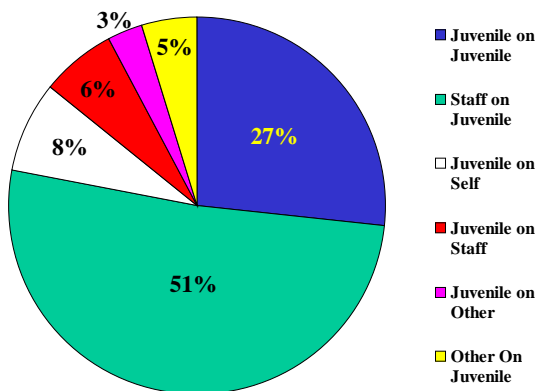
INCIDENTS

Incidents Accepted by the Child Abuse Hotline July 2001 - June 2002

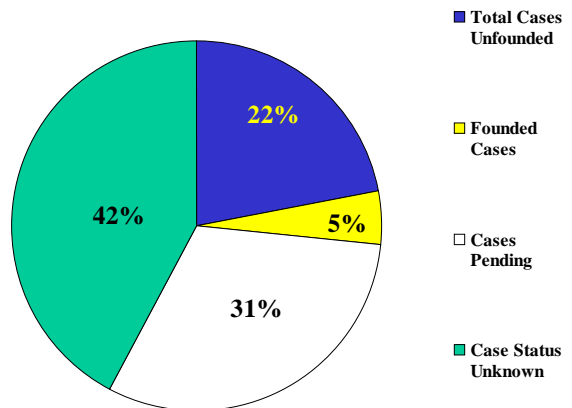
REFERRED TO HOTLINE						INCIDENTS ACCEPTED BY HOTLINE
156						64
Incident Type	Cases Accepted by ASP	Cases Pending	Cases Founded	Cases Unfounded	Case Status Unknown	
ASSAULT	4	1	0	0	3	
DISORDERLY CONDUCT	3	2	0	0	1	
FIGHT	1	0	0	0	1	
NEGLECT	2	1	0	0	1	
OTHER	11	4	0	1	6	
PHYSICAL ABUSE	23	9	0	12	2	
SEXUAL ABUSE	18	2	3	1	12	
SEXUAL MISCONDUCT	2	1	0	0	1	
TOTAL	64	20	3	14	27*	

* Since the Hotline and the Investigations unit are two separate sections within the Arkansas State Police, the Hotline may accept an incident called in, then later the incident will not be investigated by the Investigations Unit after review of the circumstances. The DYS IAU never receives a follow-up on these reports to know whether they were ever investigated. Some of these incidents occurred prior to the juvenile being committed to DYS. The IAU does not receive notification of the findings in these incidents. Some incidents that are reported in one quarter may not be finalized by the State Police until sometime within the next quarter.

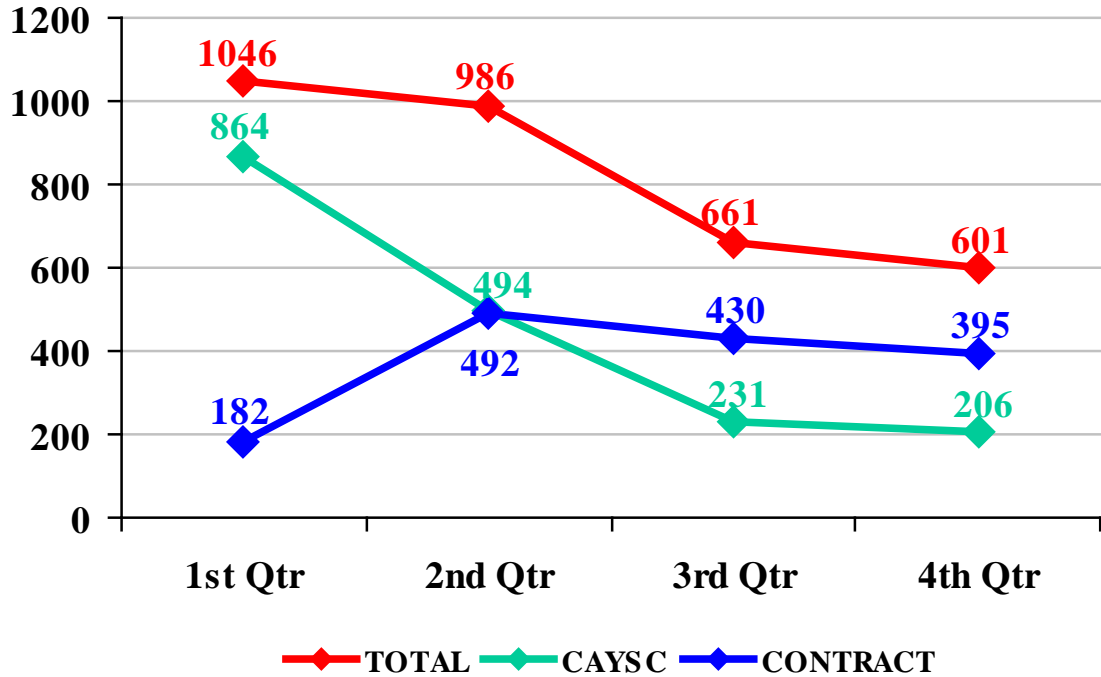
Categories of Cases Accepted



Status of Cases Accepted

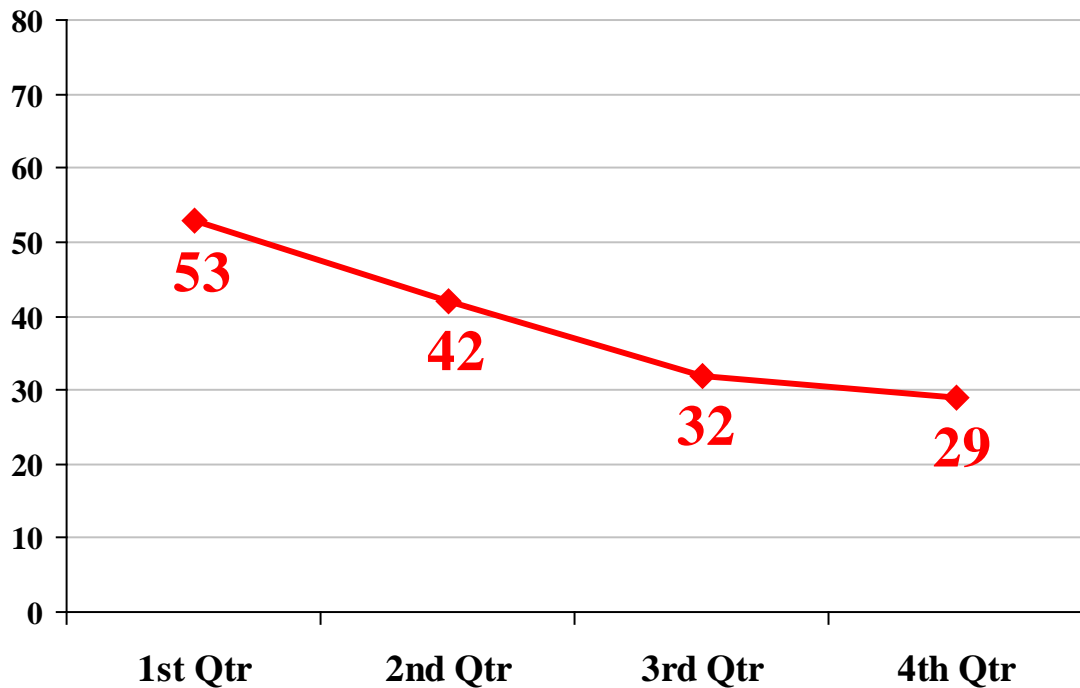


Incident Reports for FY 2002



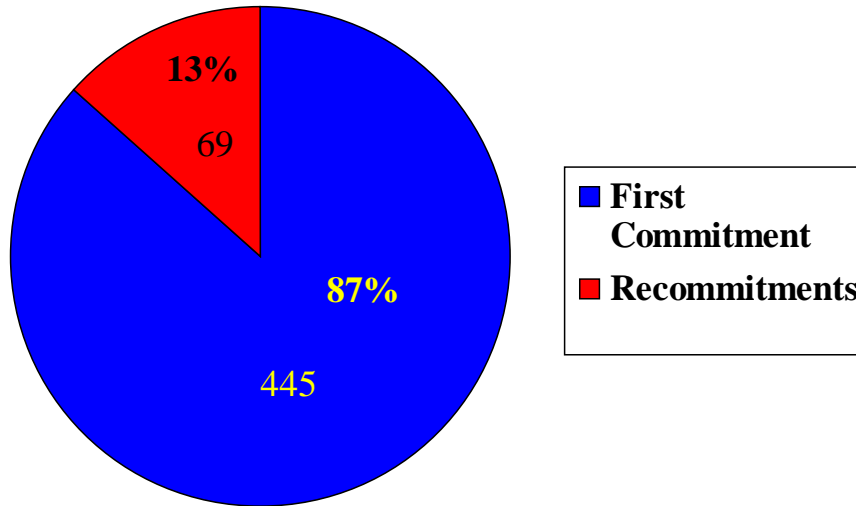
NOTE: New incident reporting procedures were implemented during the 1st quarter which resulted in an increase in reports.

Incidents Reported to Hotline for FY 2002



COMMITMENTS

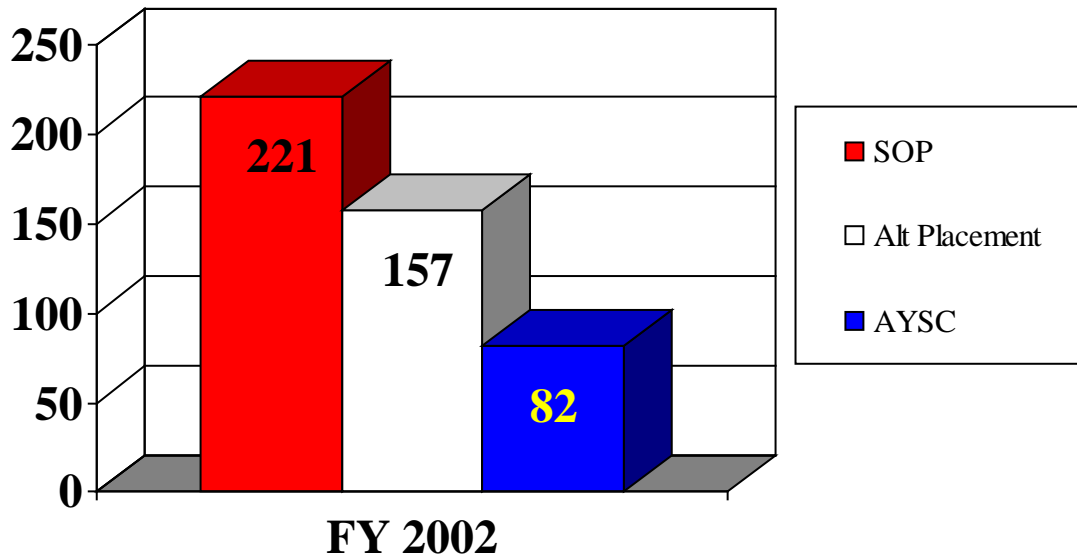
All Juveniles Committed During the Fiscal Year



Recommitments encompass all juveniles previously released from DYS custody and committed again during the fiscal year.

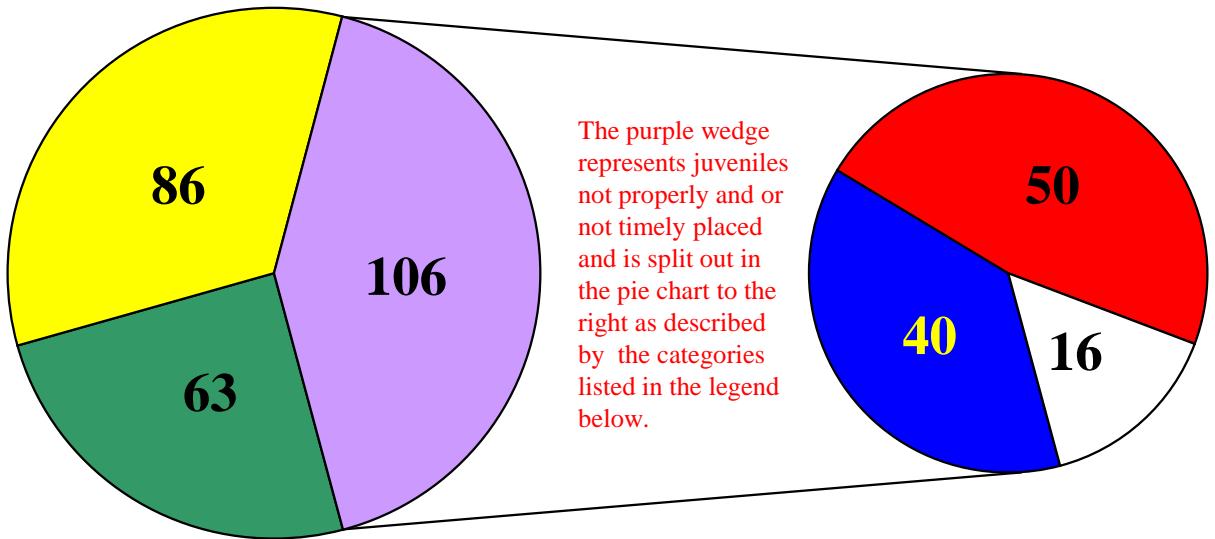
Average Length of Stay in Days for Juveniles Released

July 2001 - June 2002



RECOMMENDED PLACEMENTS

Juveniles Who Were Assessed During the Fiscal Year



■ Properly and Timely Placed

Juvenile was placed in accordance with either Primary Recommendation or Secondary recommendation within 14 days of Assessment.

■ Properly Placed After Holding Period

Juvenile was placed with either Primary or Secondary Recommendation 14-30 days following Assessment.

■ Not Timely Placed

Juvenile was not placed with either Primary or Secondary Recommendation within 30 days of Assessment.

■ Not Properly Placed

Juvenile was placed within 30 days of assessment but was not placed at either Primary or Secondary Recommendation.

□ Not Properly and Not Timely Placed