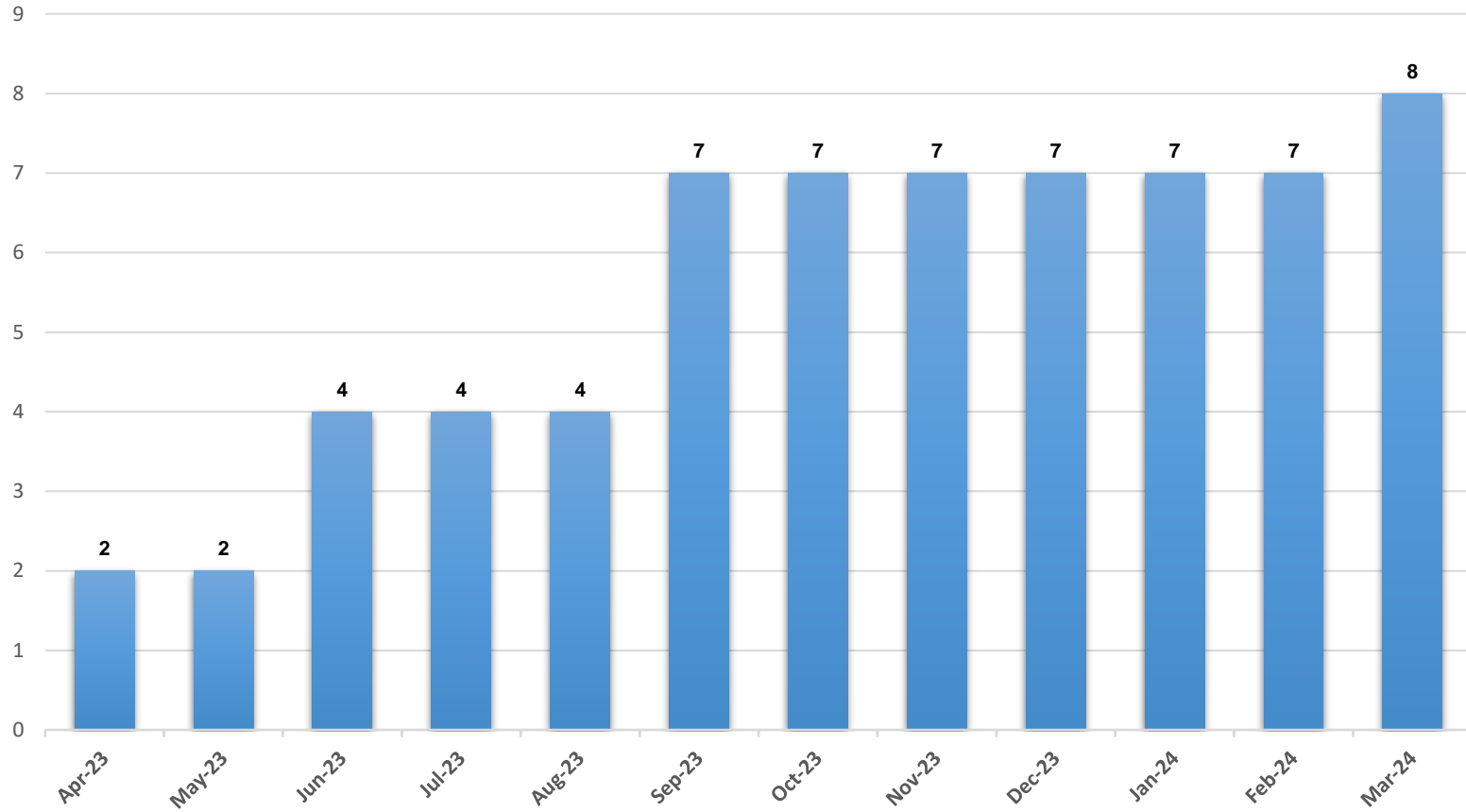
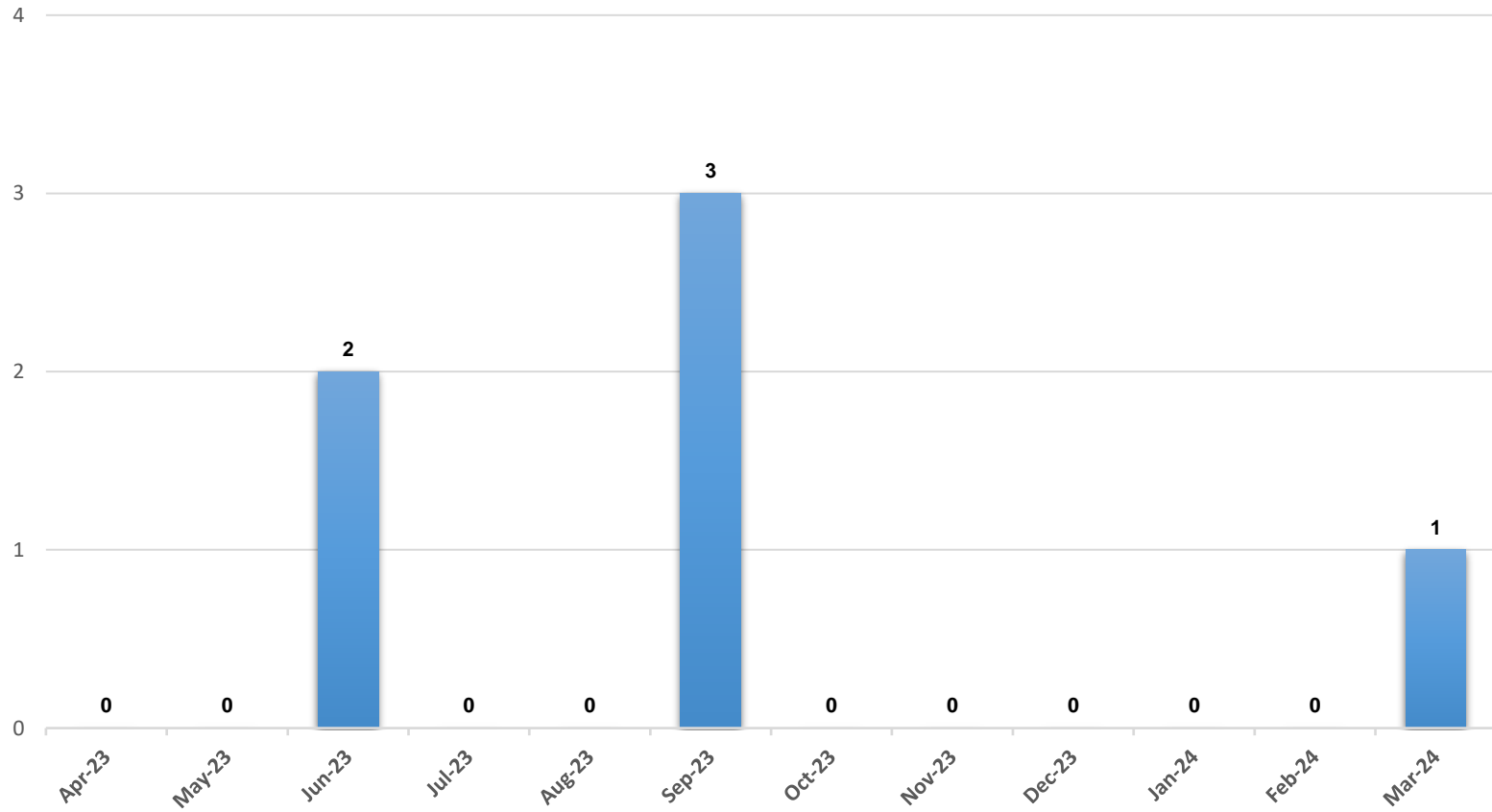


## Children in Foster Care, Montgomery



\*The chart above represents the number of children in foster care at the end of the month.

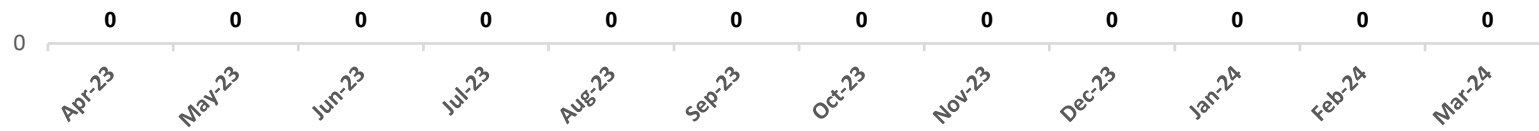
## Entries into Foster Care During the Month, Montgomery



\*The chart above represents the number of entries into foster care during the month.

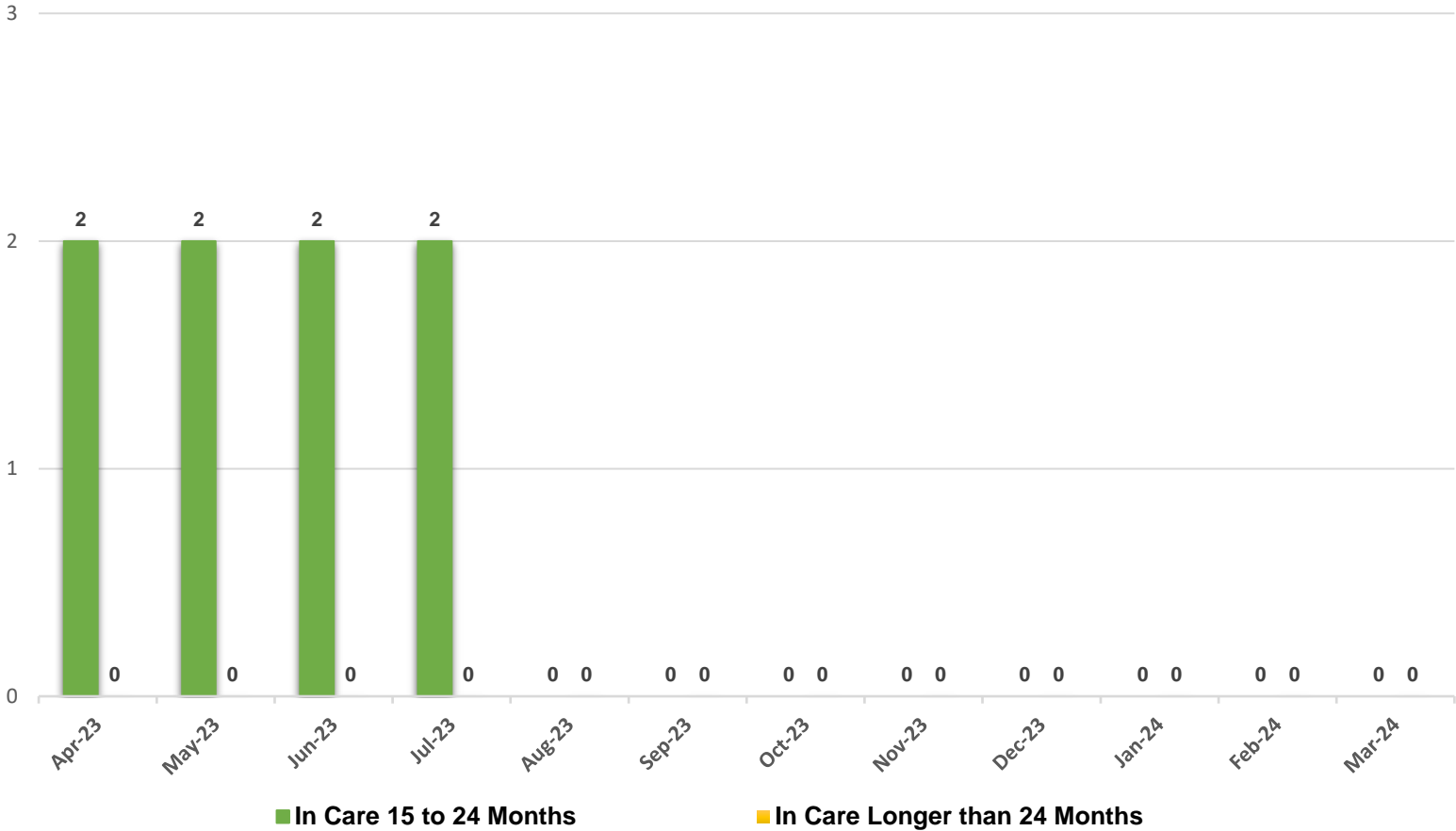
## Discharges from Foster Care During the Month, Montgomery

1



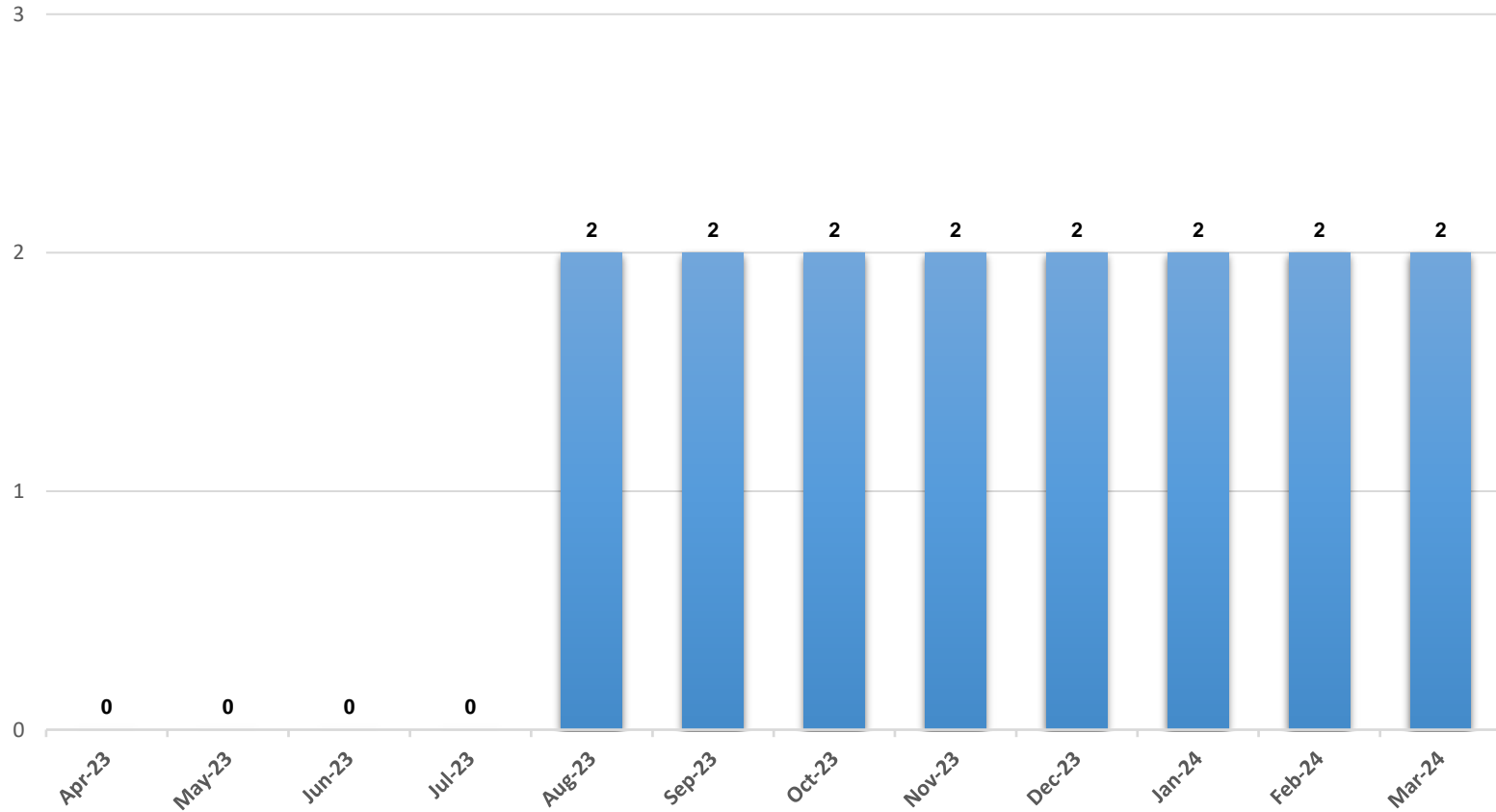
\*The chart above represents the number of discharges from foster care during the month.

### Children with a Goal of Reunification, Montgomery



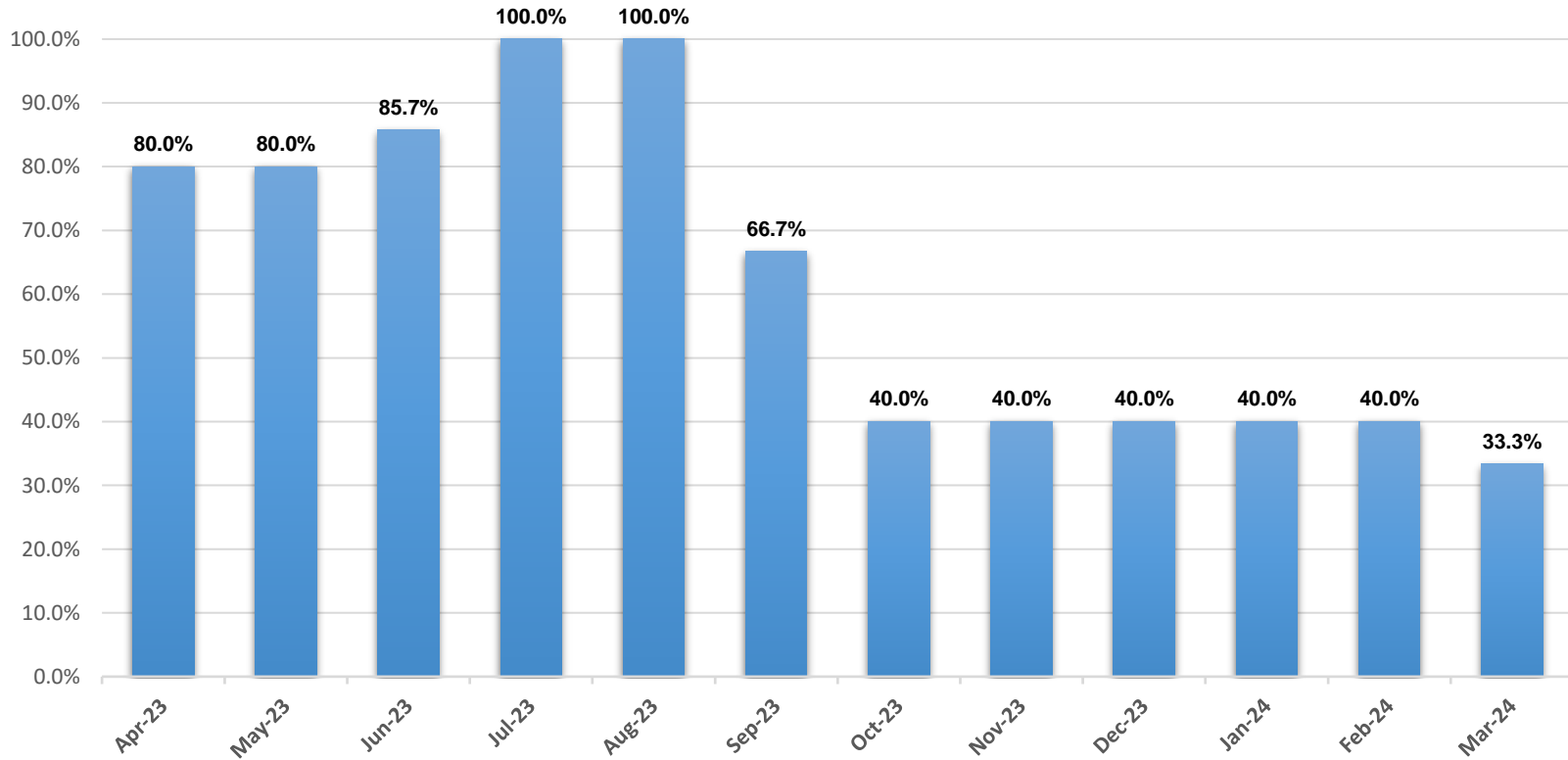
\*The chart above represents the number of children with a goal of reunification at the end of each month.

## Children in Foster Care 24 Months or Longer, Montgomery



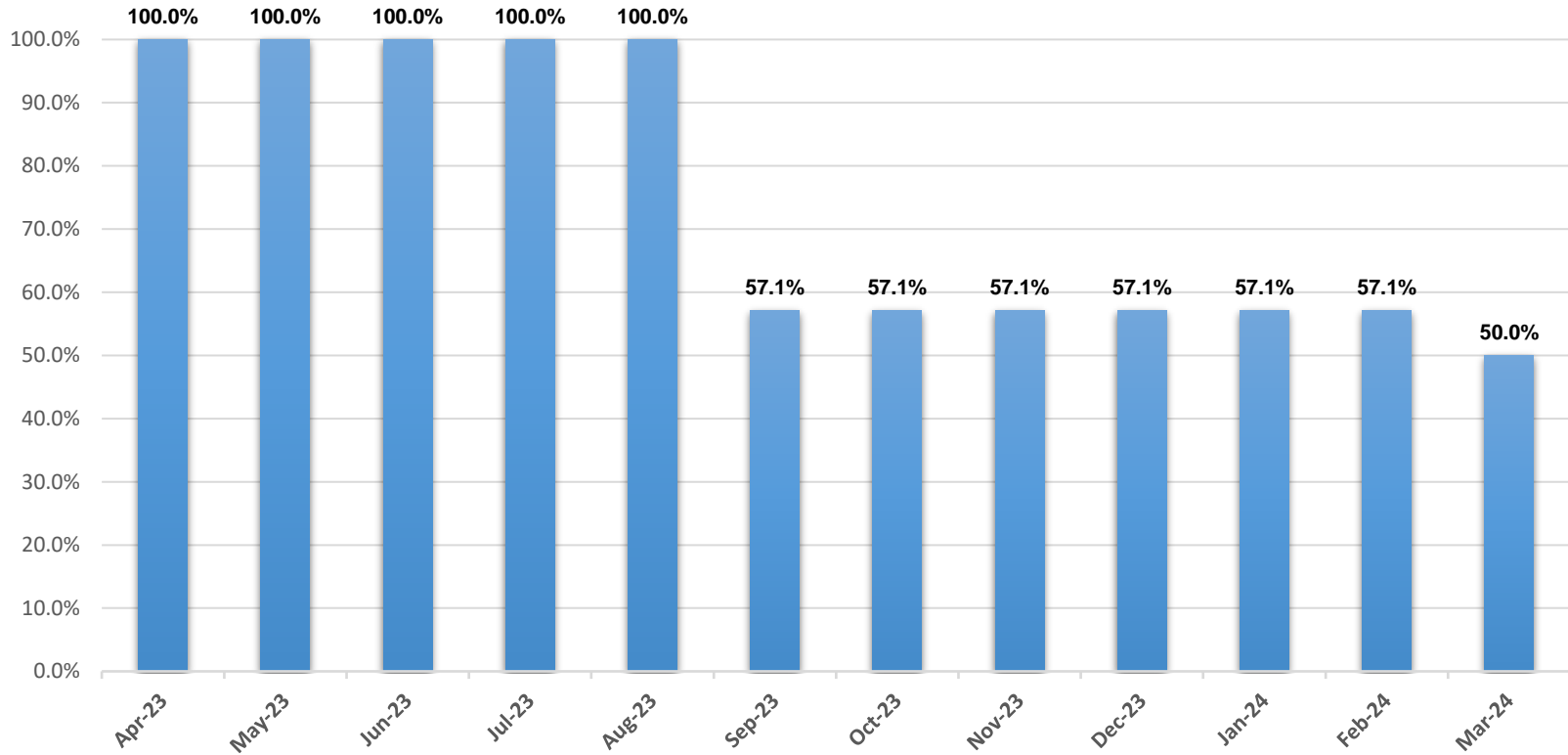
\*The chart above represents the number of children who have resided in foster care for 24 consecutive months or longer at the end of the month.

## Children Entering Care whose First Placement is with Relative, Montgomery



**\*The chart above represents the percentage of entries into care for the 12-month period concluding at the end of each month in which the child's first placement was with a relative or fictive kin.**

## Children Placed with Relatives, Montgomery



**\*The chart above represents the percentage of children residing with relatives at the end of each month.**

***\*Children are considered to be residing with relatives if they are placed in a provisional relative or provisional fictive kin home, relative or fictive kin foster home, relative pre-adoptive home, ICPC home, or temporary family placement.***