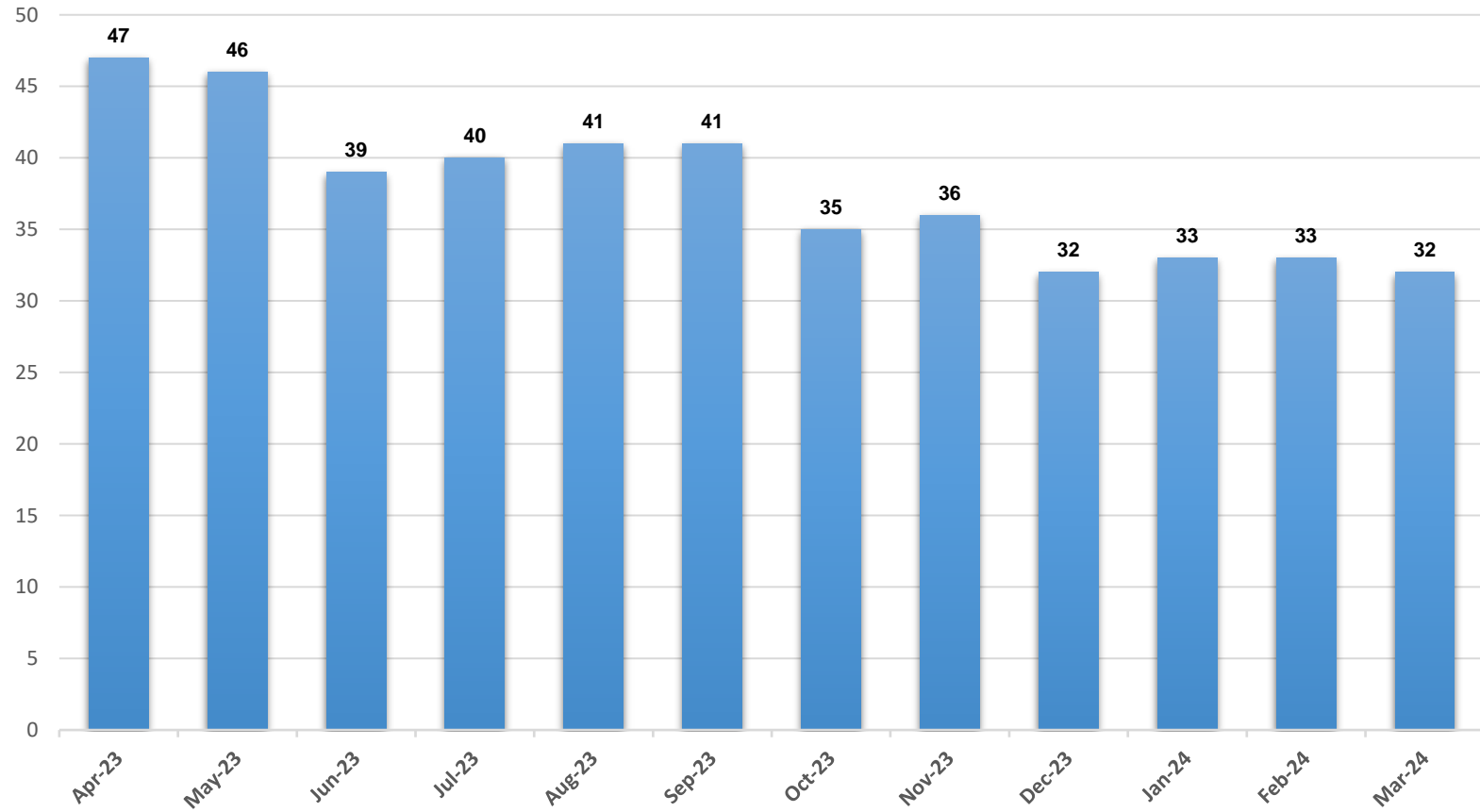
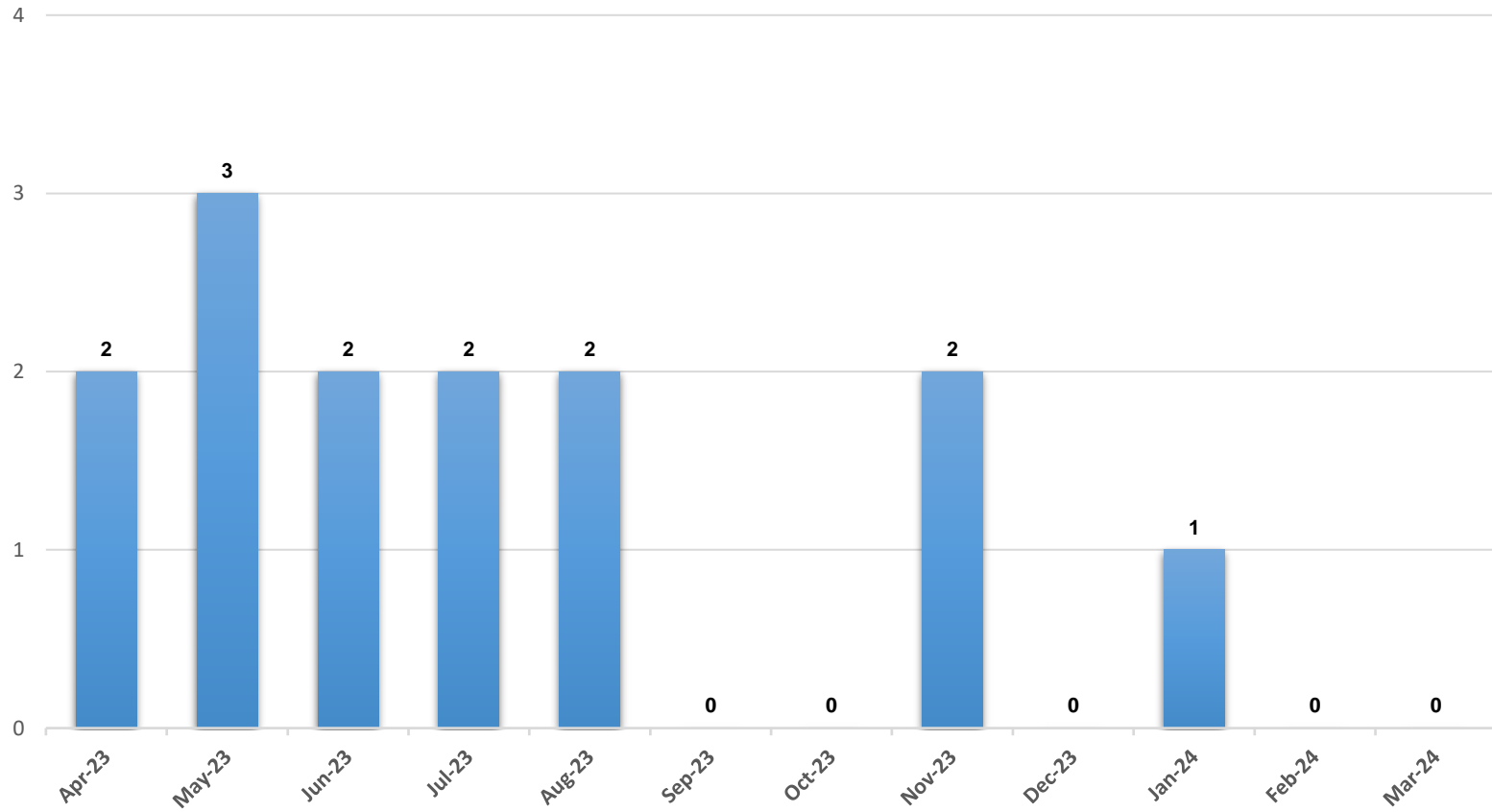


Children in Foster Care, Hempstead



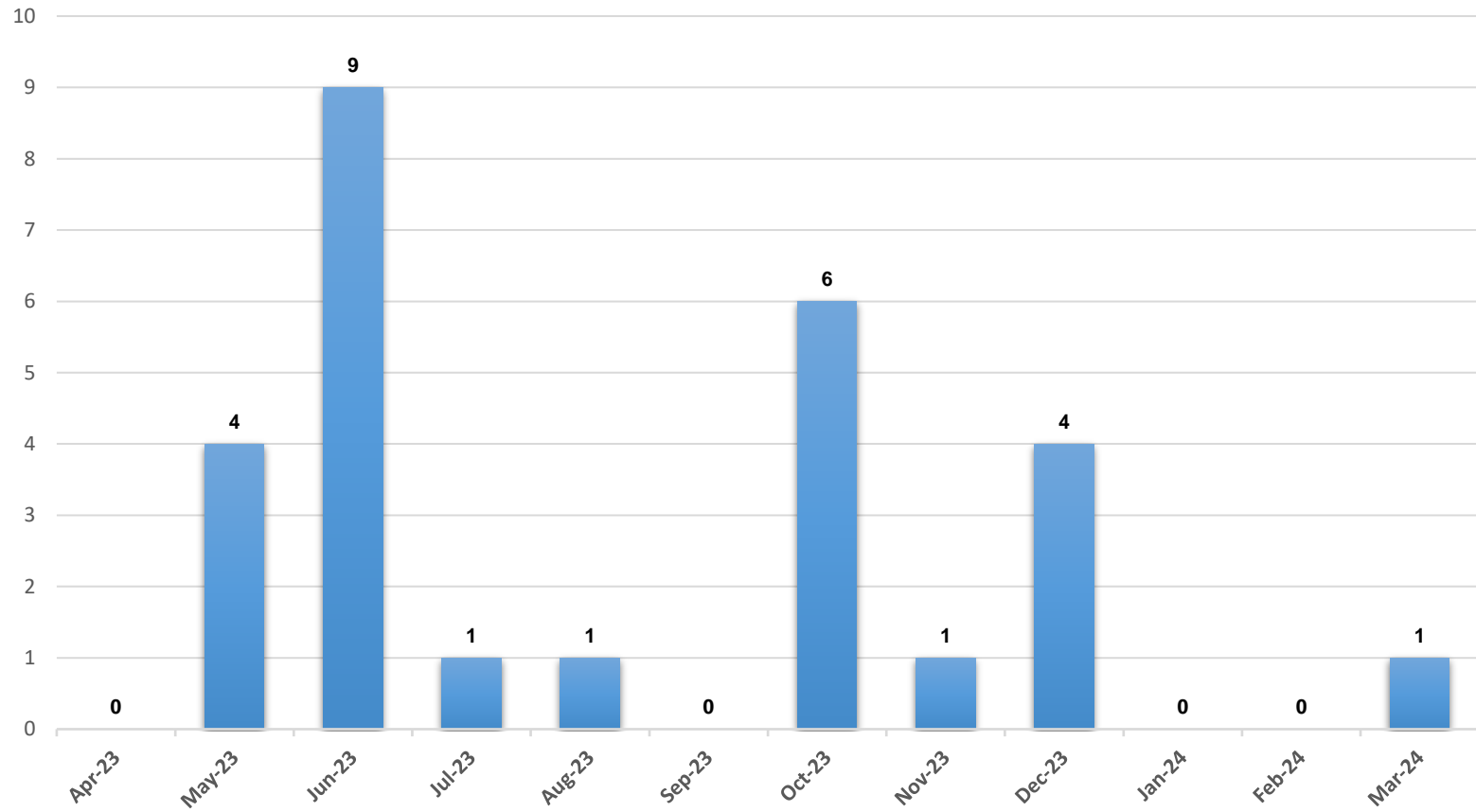
*The chart above represents the number of children in foster care at the end of the month.

Entries into Foster Care During the Month, Hempstead



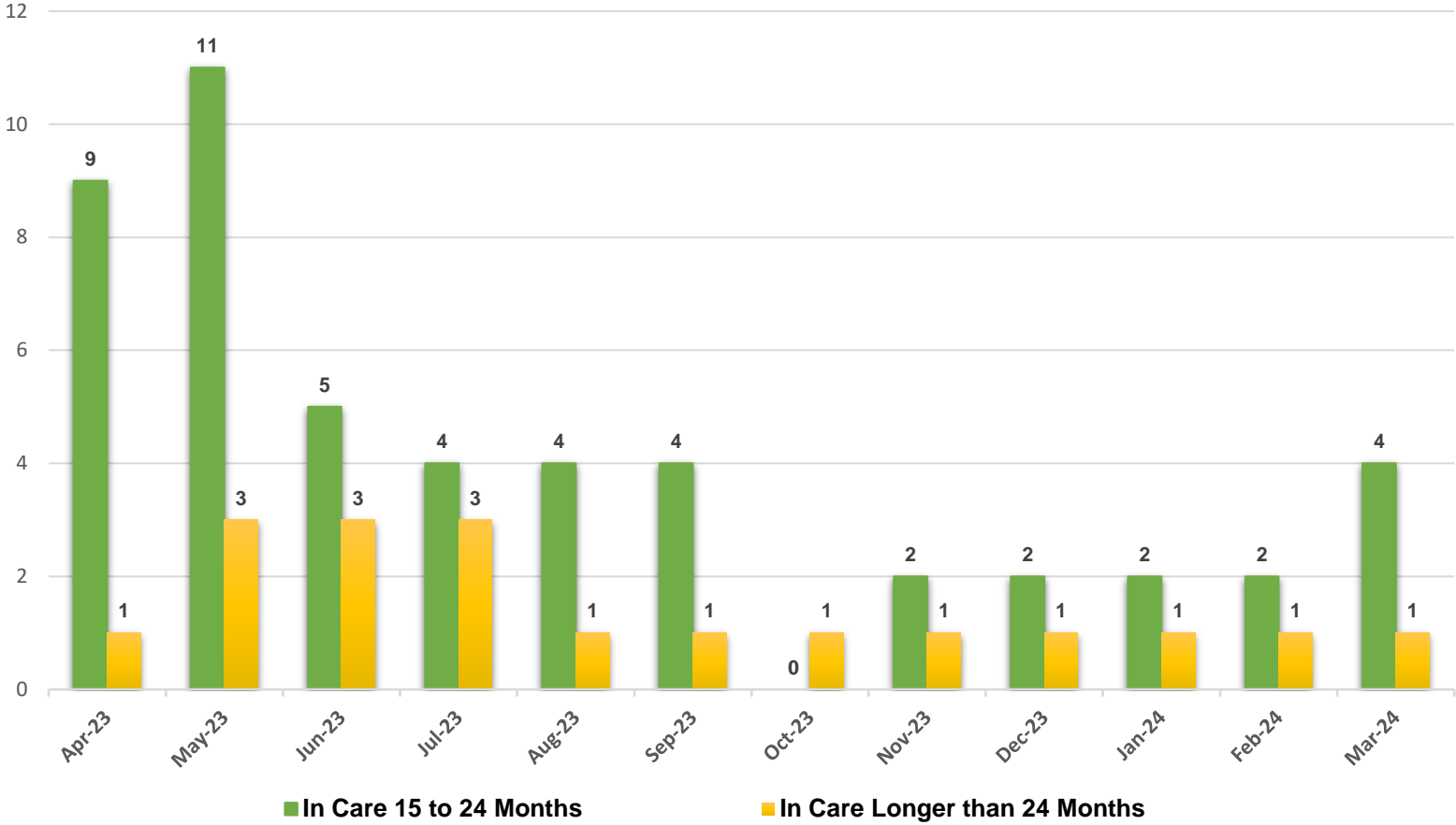
*The chart above represents the number of entries into foster care during the month.

Discharges from Foster Care During the Month, Hempstead



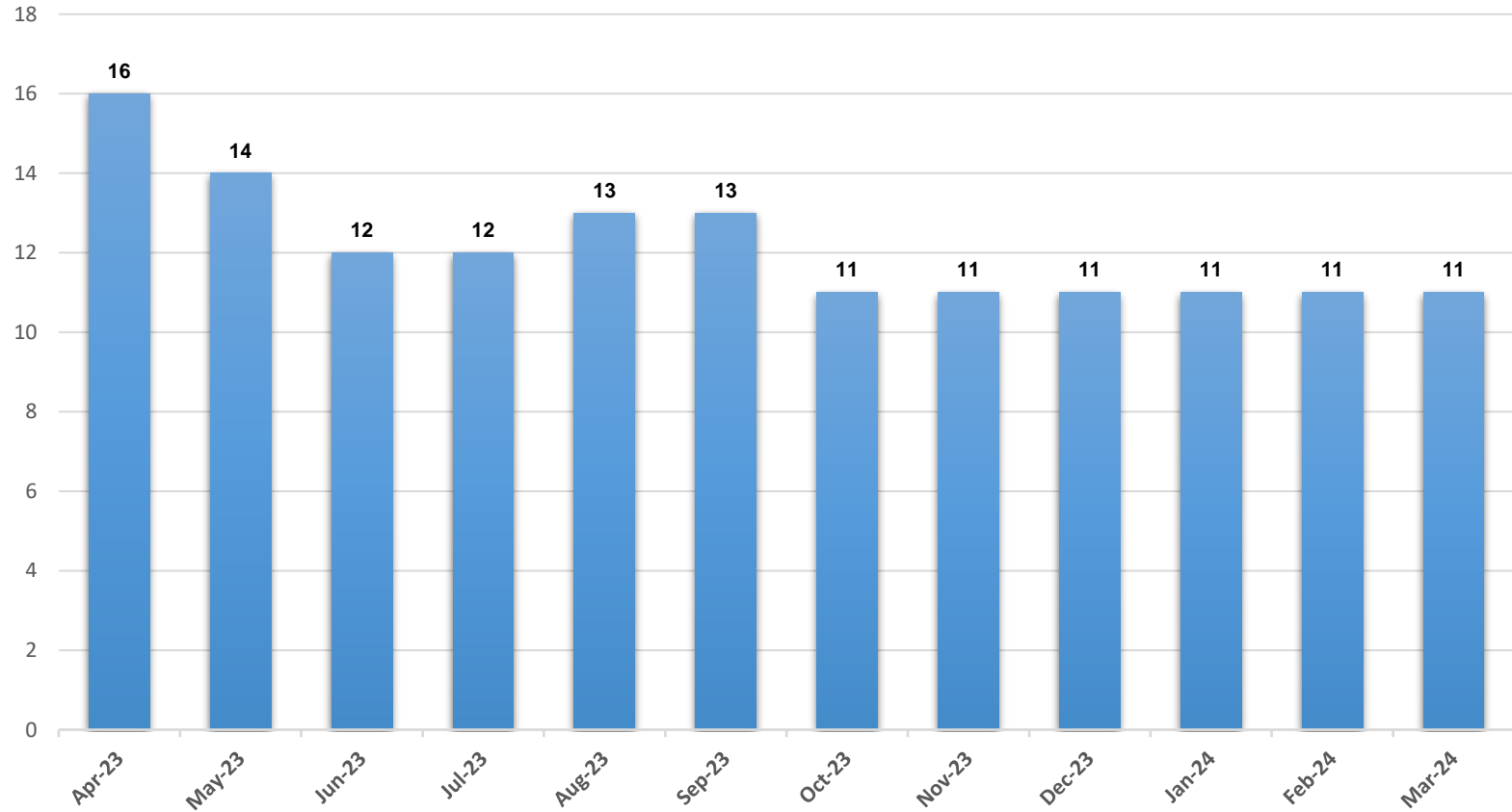
*The chart above represents the number of discharges from foster care during the month.

Children with a Goal of Reunification, Hempstead



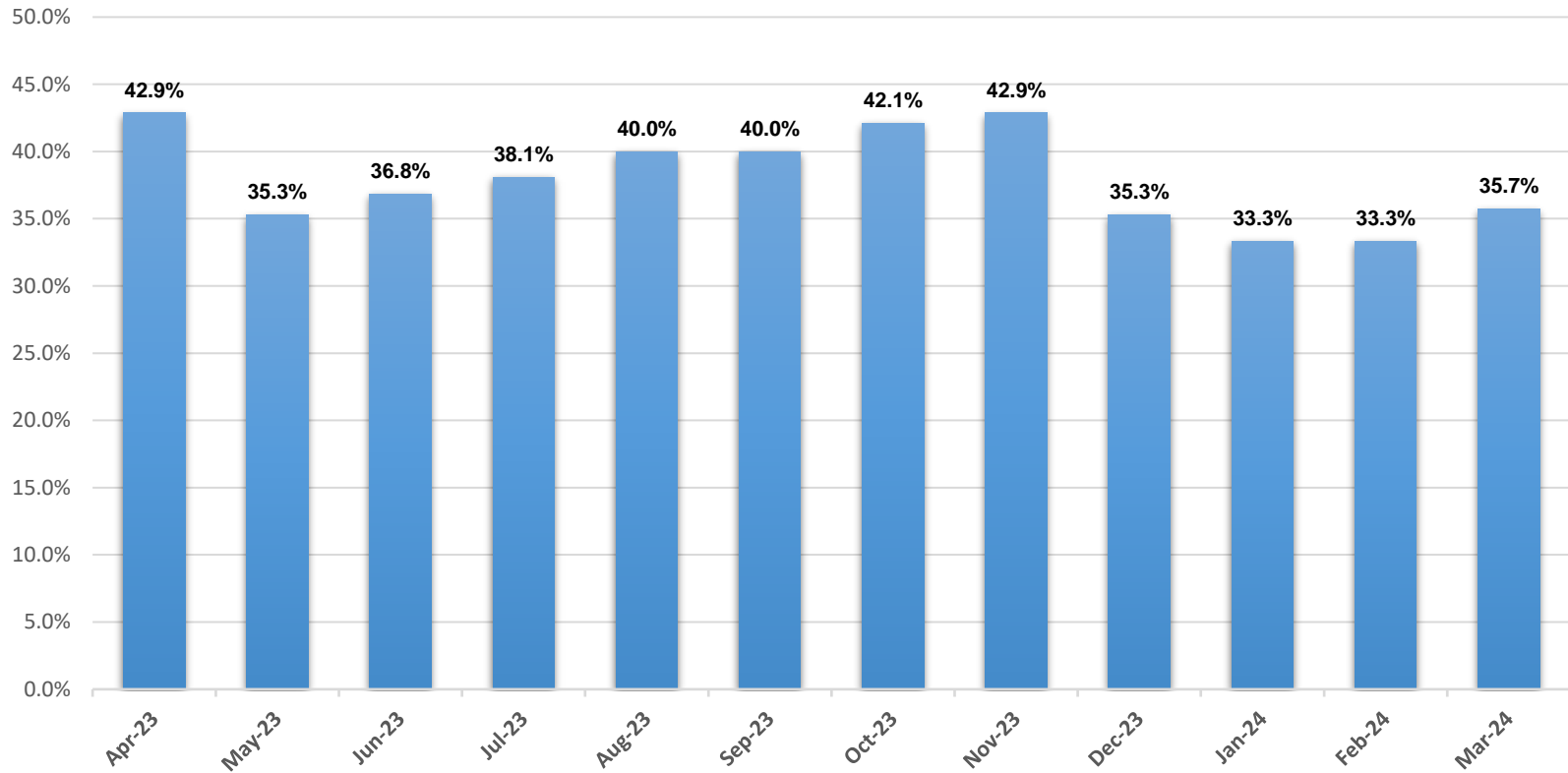
*The chart above represents the number of children with a goal of reunification at the end of each month.

Children in Foster Care 24 Months or Longer, Hempstead



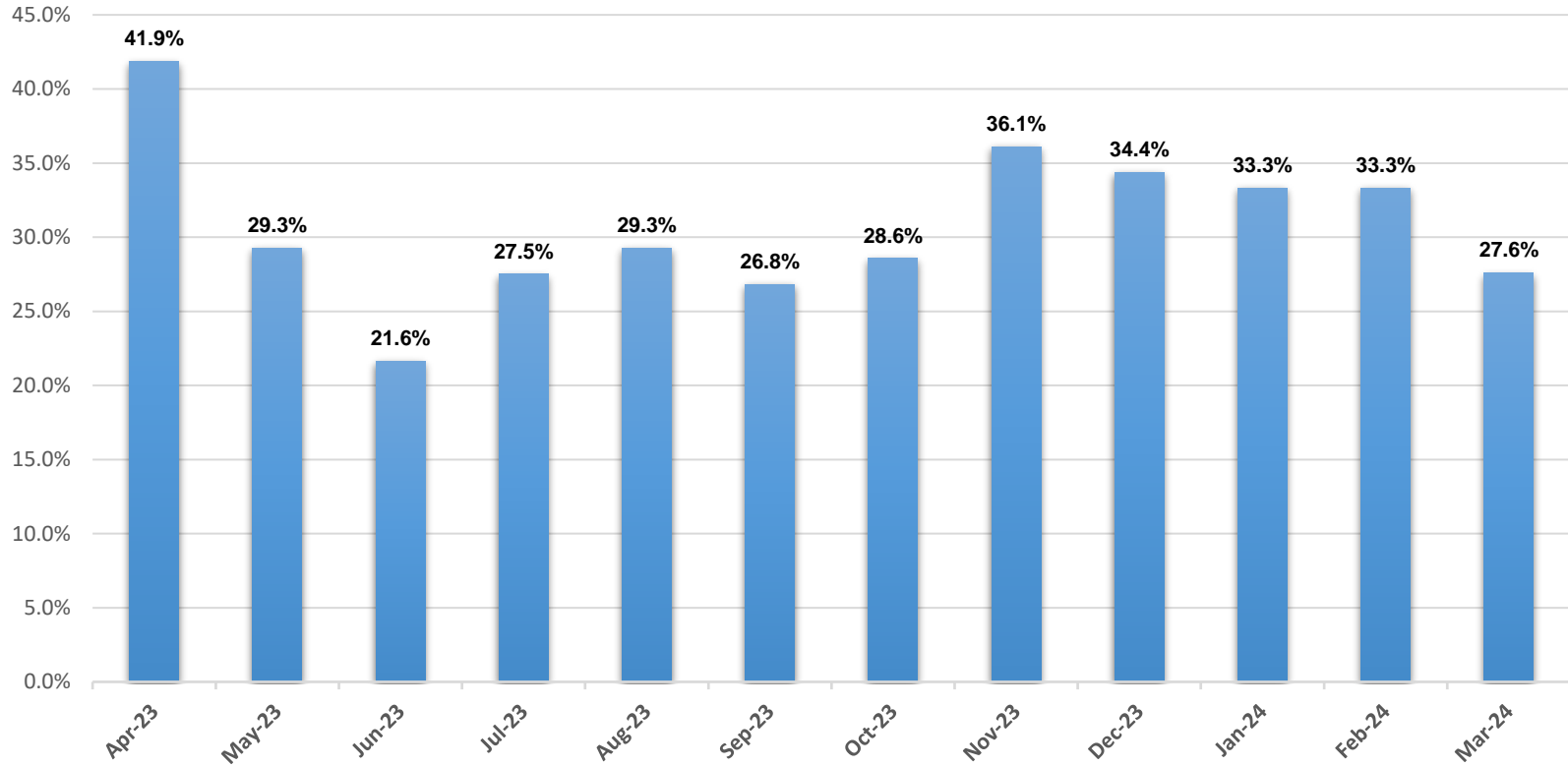
*The chart above represents the number of children who have resided in foster care for 24 consecutive months or longer at the end of the month.

Children Entering Care whose First Placement is with Relative, Hempstead



***The chart above represents the percentage of entries into care for the 12-month period concluding at the end of each month in which the child's first placement was with a relative or fictive kin.**

Children Placed with Relatives, Hempstead



***The chart above represents the percentage of children residing with relatives at the end of each month.**

****Children are considered to be residing with relatives if they are placed in a provisional relative or provisional fictive kin home, relative or fictive kin foster home, relative pre-adoptive home, ICPC home, or temporary family placement.***