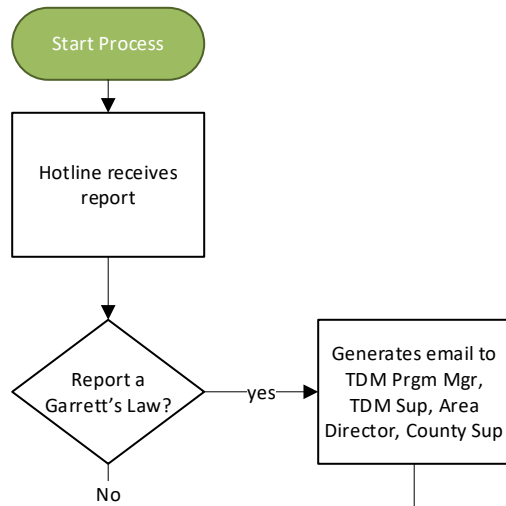
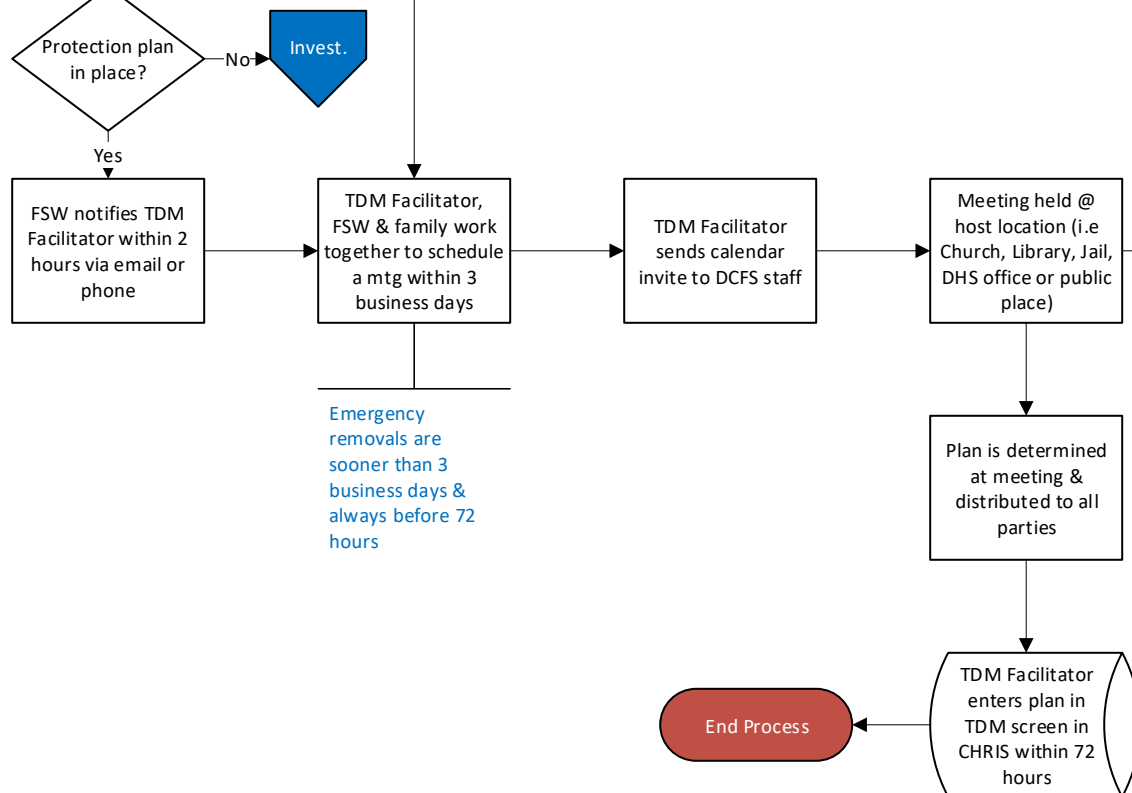


Hotline



DCFS Central Office - Family Services



Emergency removals are sooner than 3 business days & always before 72 hours

Meeting Attendees:
 - TDM Facilitator
 - FSW Sup
 - FSW
 - Family support providers (i.e. teachers, parole officer, counselors)

6 Stages of Team Decision Making:
 1. Introduction as relates to Child
 2. Identify Situation – Shared understanding of why meeting is being held
 3. Assessment – Worries, Strengths, Protective Factors
 4. Developing Ideas of keeping child safe
 5. Decision Making – ?
 6. Recap & Close