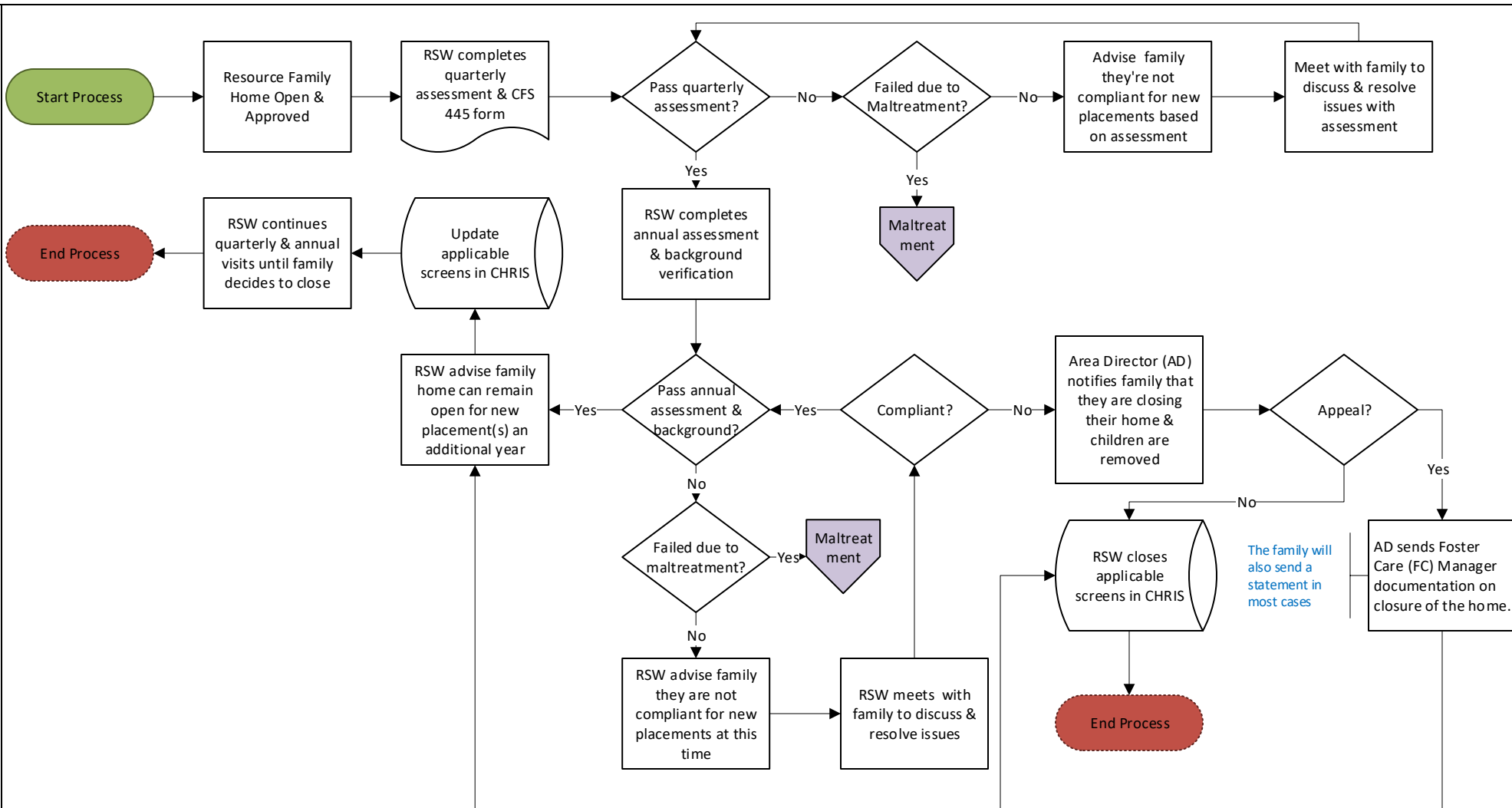


DCFS - County



Central Office

- *Resource Review Committee:**
- Foster Care Manager
 - Partnership Support & Resource Specialist
 - Specialized Placement Unit Manager
 - Child Protective Services Manager
 - Child Protective Service Specialist

Home may have restrictions based on age, # of children, etc.

The family will also send a statement in most cases

10 business days