



**Arkansas Department of Human Services
Monthly Enrollment and Expenditures Report
Calendar Year 2019**

Enrollment at 1st Day of Month

	Arkansas		Medicaid & CHIP	
	Works	Traditional Adults	Children	Total
January 2019	234,400	239,755	404,733	878,888
February 2019	233,870	240,349	405,322	879,541
March 2019	235,962	236,870	409,545	882,377
April 2019	240,177	237,859	416,211	894,247
May 2019	239,558	236,389	410,856	886,803
June 2019	239,081	236,089	409,124	884,294
July 2019	242,990	237,339	414,356	894,685
August 2019	243,432	236,885	412,729	893,046
September 2019	246,439	237,481	415,648	899,568
October 2019				0
November 2019				0
December 2019				0

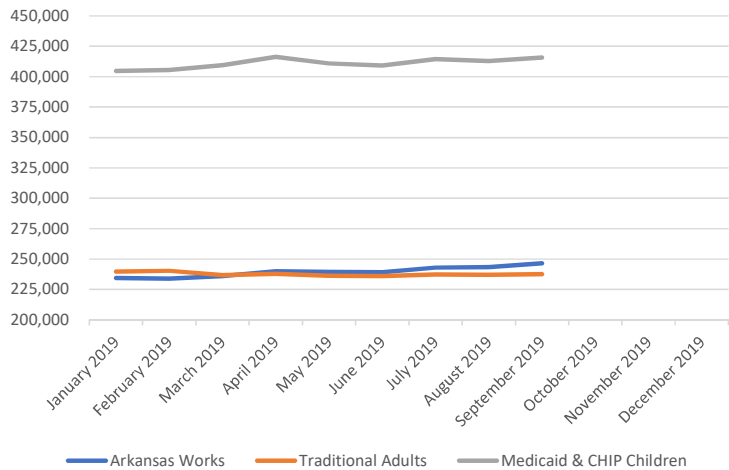
NOTE: Enrollment numbers are based on report ran on the first Monday after the claim cycle that includes in the first day of the month.

Enrollment as of the Last Day of the Month

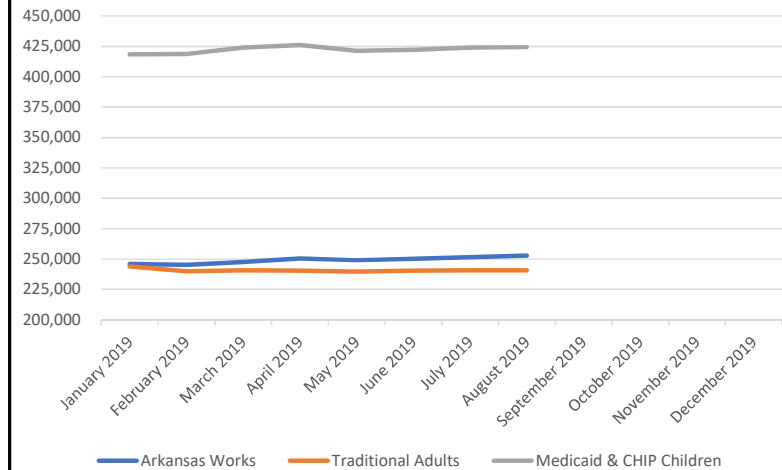
	Arkansas Works		Medicaid & CHIP	
	Traditional Adults	Children	Total	
January 2019	245,857	243,819	418,424	908,100
February 2019	245,198	239,963	418,615	903,776
March 2019	247,631	240,876	423,870	912,377
April 2019	250,573	240,558	426,091	917,222
May 2019	249,025	239,641	421,342	910,008
June 2019	250,129	240,422	422,115	912,666
July 2019	251,601	240,700	423,855	916,156
August 2019	252,873	240,846	424,353	918,072
September 2019				0
October 2019				0
November 2019				0
December 2019				0

NOTE: Enrollment numbers are based on report ran on the first Monday after the claim cycle that includes in the first day of the month. January through March 2019 End of the Month Enrollment numbers were ran on April 17, 2019.

Enrollment at 1st Day of Month



Enrollment as of the Last Day of the Month





**Arkansas Department of Human Services
Monthly Enrollment and Expenditures Report
Calendar Year 2019**

Total Spend Per Month - Arkansas Works 1115 Demonstration Premium Assistance Program

	Arkansas Works	Arkansas Works Premiums	Arkansas Works Cost Sharing	Arkansas Works Wrap Services	Total Arkansas Works QHP Program	Arkansas Works PMPM QHP Program	Reconciliation Payments & Non-Claim Adjustments	Arkansas Works PMPM QHP Program After Reconciliations	Budget Neutrality Amount
January 2019	193,186	\$87,787,873.55	\$31,903,617.08	\$676,746.66	\$120,368,237.29	\$623.07	(\$297,227.63)	\$621.53	\$625.39
February 2019	191,587	\$86,734,810.88	\$31,703,014.94	\$686,112.77	\$119,123,938.59	\$621.77	(\$350,995.82)	\$619.94	\$625.39
March 2019	195,886	\$88,558,636.23	\$32,341,434.73	\$701,381.96	\$121,601,452.92	\$620.78	\$30,641,195.04	\$777.20	\$625.39
April 2019	201,439	\$88,410,798.71	\$32,307,564.91	\$702,276.71	\$121,420,640.33	\$602.77	\$10,587,542.38	\$655.33	\$625.39
May 2019	200,098	\$91,582,756.88	\$33,483,654.60	\$713,633.74	\$125,780,045.22	\$628.59	(\$314,207.48)	\$627.02	\$625.39
June 2019	201,283	\$89,643,792.92	\$32,818,916.04	\$718,589.98	\$123,181,298.94	\$611.98	\$2,921,198.04	\$626.49	625.39
July 2019	204,753	\$91,335,040.75	\$33,436,266.86	\$727,177.97	\$125,498,485.58	\$612.93	(\$0.61)	\$612.93	\$625.39
August 2019	205,563	\$91,621,011.32	\$33,539,371.64	\$734,894.16	\$125,895,277.12	\$612.44	\$926,242.04	\$616.95	\$625.39
September 2019									
October 2019									
November 2019									
December 2019									

NOTE: Arkansas Works program has reconciliations done on a periodic basis for cost sharing reduction payments and premium payments made for individuals above 100% FPL. These payments are not included in the claims processing payments due to the material impact on a per member per month amount in the month paid despite the payments being made for previous months. **March 2019 and April 2019 adjustment includes Annual Cost Sharing Reconciliations to QHP Carriers. These amounts are applied to budget neutrality figures for 2016 and 2017 and are not matched against budget neutrality for 2019.**

Total Spend Per Month - Fee For Service

	Newly Eligible	Fee for Service Payments	Newly Eligible FFS PMPM	Traditional FFS	Traditional Medicaid Fee for Service Payments	Traditional Medicaid Fee For Service	Total FFS Members	Total FFS Expenditures	Total FFS PMPM
January 2019	52,671	\$21,946,332.34	\$416.67	662,243	\$335,885,222.00	\$507.19	714,914	\$357,831,554.34	\$500.52
February 2019	53,611	\$22,694,690.23	\$423.32	658,578	\$487,814,099.00	\$740.71	712,189	\$510,508,789.23	\$716.82
March 2019	51,745	\$28,265,675.04	\$546.25	664,746	\$663,522,160.00	\$998.16	716,491	\$691,787,835.04	\$965.52
April 2019	49,134	\$22,050,258.29	\$448.78	666,649	\$451,955,247.00	\$677.95	715,783	\$474,005,505.29	\$662.22
May 2019	48,927	\$37,409,438.26	\$764.60	660,983	\$573,899,403.00	\$868.25	709,910	\$611,308,841.26	\$861.11
June 2019	48,846	\$22,284,226.02	\$456.21	662,537	\$541,301,535.00	\$817.01	711,383	\$563,585,761.02	\$792.24
July 2019	46,848	\$24,247,871.03	\$517.59	664,555	\$537,423,921.00	\$808.70	711,403	\$561,671,792.03	\$789.53
August 2019	47,310	\$30,148,509.84	\$637.25	665,199	\$517,071,830.96	\$777.32	712,509	\$547,220,340.80	\$768.02
September 2019									
October 2019									
November 2019									
December 2019									

NOTE: Fee for service per member per month fluctuates due to timing of claims being paid. Additionally, payment of non-claims activity such as supplemental payments and disproportionate share hospital payments can significantly alter the per member per month amount for the month those payments are made.